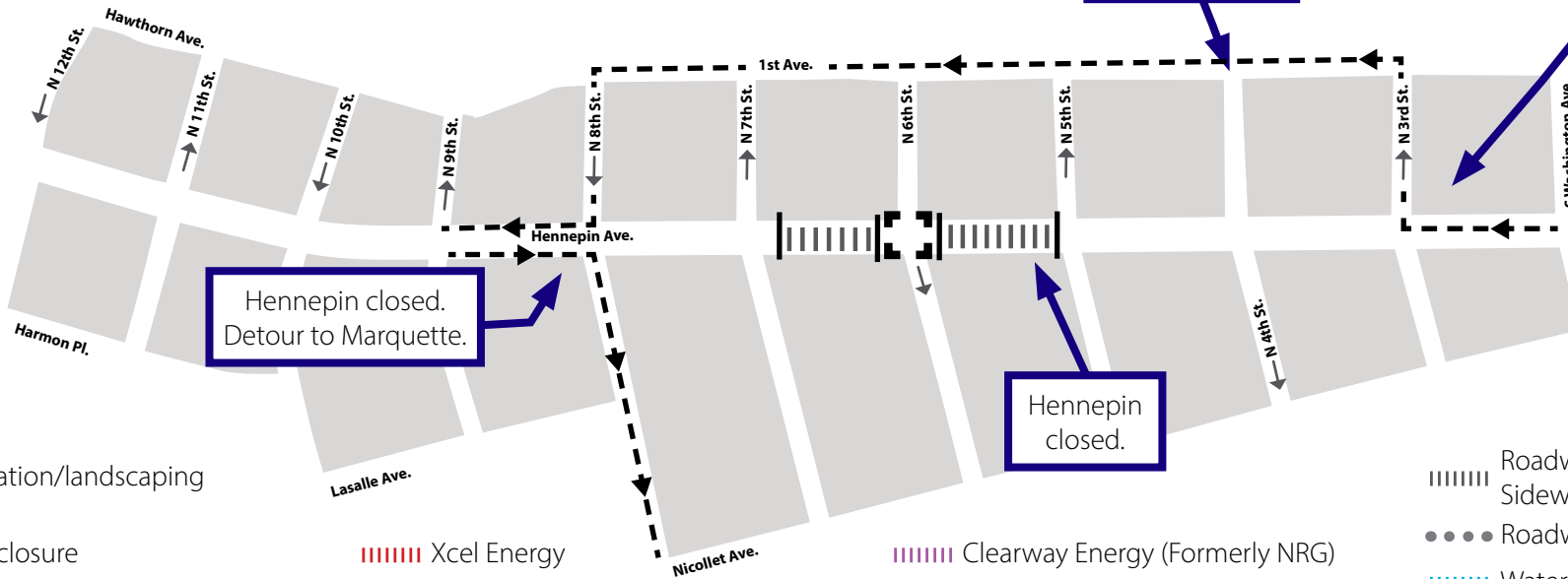


HENNEPIN AVENUE

— Reconstruction Project —

Construction Update
Volume 99: July 17 - July 23, 2022



●●● Irrigation/landscaping

□ Full closure

||||| Xcel Energy

□□ Partial intersection reduction

||||| CenterPoint gas

||||| Clearway Energy (Formerly NRG)

||||| Telecommunications

||||| Roadway & Sidewalk work

●●● Roadway Lighting

||||| Water

||||| City sewer



WHAT'S HAPPENING

- Hennepin Construction is underway. Hennepin will be closed from 5th to 7th street.
- Utility construction will consist of both Public and Private utility improvements, upgrades, expansion, relocations and replacements.



WHAT TO EXPECT

- Public and private utility work requiring the use of heavy equipment that will increase noise, vibration, and dust in work areas.
- Vehicle traffic congestion accompanying lane restrictions on Hennepin Ave. between 7th St and Washington Ave. Traffic will be reduced to one lane in each direction for the duration of utility construction. Lane restrictions will vary by block based on construction activity.
- Pedestrian detours as needed to facilitate construction needs. Greater impacts can be expected at intersections where work is occurring.
- Business access will remain open during the construction activity.
- Changes to Metro Transit. All Buses are detoured to Nicollet Mall. Visit Metro Transit website for specific route information.
- No left turns on or off Hennepin Ave. in certain locations.
- Cross streets will be reduced to one lane at times.
- Increased traffic congestion on 1st Ave. and Washington Ave. detour routes.



STAY CONNECTED

- Visit the project website: www.hennepindowntown.com
- Sign up for project updates on the project website.
- Contact the project hotline with questions, comments or concerns: **612-255-4049** or email HennepinCM@minneapolismn.gov

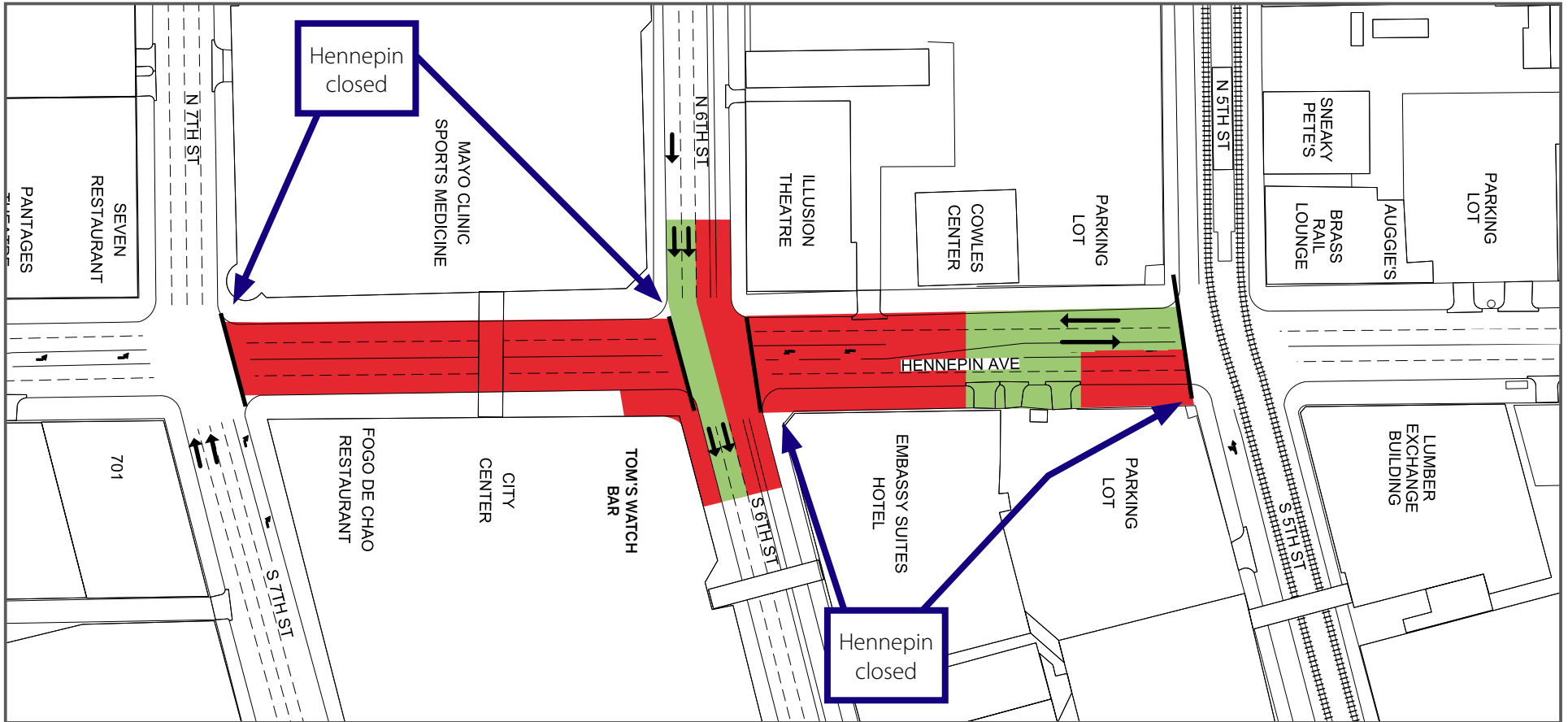
HENNEPIN AVENUE

— Reconstruction Project —

Construction Update
Volume 99: July 17 - July 23, 2022



Block	Project Related Work	Anticipated Road/Pedestrian Restrictions				
		Temporary Ped Ramps	Parking Restrictions	Two Lanes Open	One Lane Open	Notes
12th Street Intersection						
12th to 11th						
11th Street Intersection						
11th to 10th						
10th Street Intersection						
10th to 9th						
9th Street Intersection						
9th to 8th						
8th Street Intersection						
8th to 7th						
7th Street Intersection						
7th to 6th	Irrigation					Hennepin Closed
6th Street Intersection	Electrical Work and Sidewalks	X	X	X		
6th to 5th	Sidewalk, Electrical Work and Irrigation					Hennepin Closed
5th Street Intersection						
5th to 4th						
4th Street Intersection						
4th to 3rd	Planter Rail Installation					
3rd Street Intersection						
3rd to Washington	Planter Rail Installation					
Washington Ave Intersection						



7th Street to 5th Street

- Lane Closures will vary over the next couple weeks and are subject to change

Work zone (no vehicle access)
*Sidewalks will be maintained

Valet and loading zone

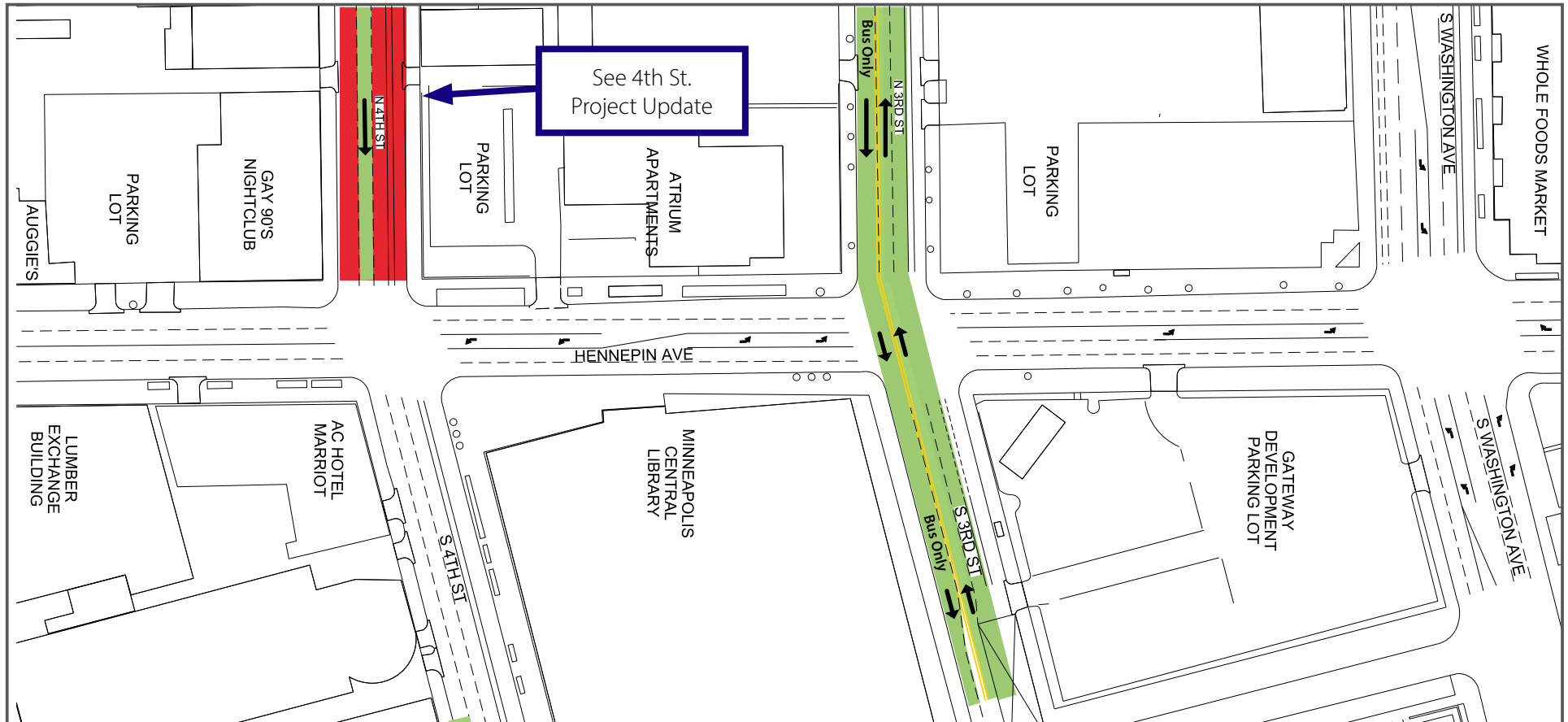
Daytime non-rush hour work zone

Work zone vehicle access maintained

Open travel lanes


Vehicle access - SB Hennepin only

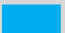
Vehicle Access - NB Hennepin only




4th Street to Washington Avenue


- Lane Closures will vary over the next couple weeks and are subject to change


 Work zone (no vehicle access)
*Sidewalks will be maintained


 Valet and loading zone

 Daytime non-rush hour work zone

 Work zone vehicle access maintained

 Open travel lanes

 Vehicle access - SB Hennepin only

 Vehicle Access - NB Hennepin only