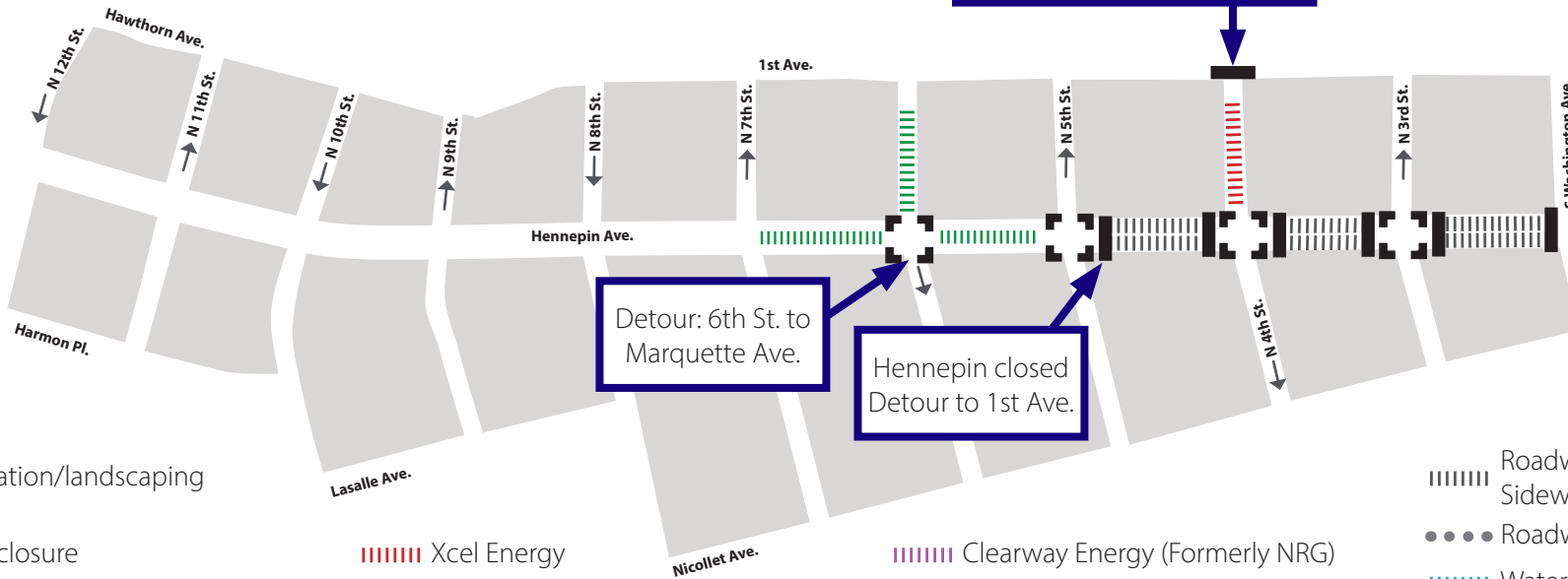


# HENNEPIN AVENUE

— Reconstruction Project —

## Construction Update

Volume 83: September 12 - September 18, 2021



●●● Irrigation/landscaping

■ Full closure

□ Partial intersection reduction

||||| Xcel Energy

||||| CenterPoint gas

||||| Clearway Energy (Formerly NRG)

||||| Telecommunications

||||| Roadway & Sidewalk work

●●● Roadway Lighting

||||| Water

||||| City sewer



### WHAT'S HAPPENING

- Roadway construction is on-going from 5th to Washington. Hennepin will be closed.
- Utility construction will continue from 7th Street to 5th St. This work will continue throughout 2021.
- Utility construction will consist of both Public and Private utility improvements, upgrades, expansion, relocations and replacements.
- Private development work will have lane closures on Hennepin between 3rd and Washington as well as on 3rd Street.



### WHAT TO EXPECT

- Public and private utility work requiring the use of heavy equipment that will increase noise, vibration, and dust in work areas.
- Vehicle traffic congestion accompanying lane restrictions on Hennepin Ave. between 13th St and Washington Ave. Traffic will be reduced to one lane in each direction for the duration of utility construction. Lane restrictions will vary by block based on construction activity.
- Pedestrian detours as needed to facilitate construction needs. Greater impacts can be expected at intersections where work is occurring.
- Business access will remain open during the construction activity.
- Changes to Metro Transit. All Buses are detoured to Nicollet Mall. Visit Metro Transit website for specific route information.
- No left turns on or off Hennepin Ave. in certain locations.
- Cross streets will be reduced to one lane at times.
- Increased traffic congestion on 1st Ave. and Washington Ave. detour routes.

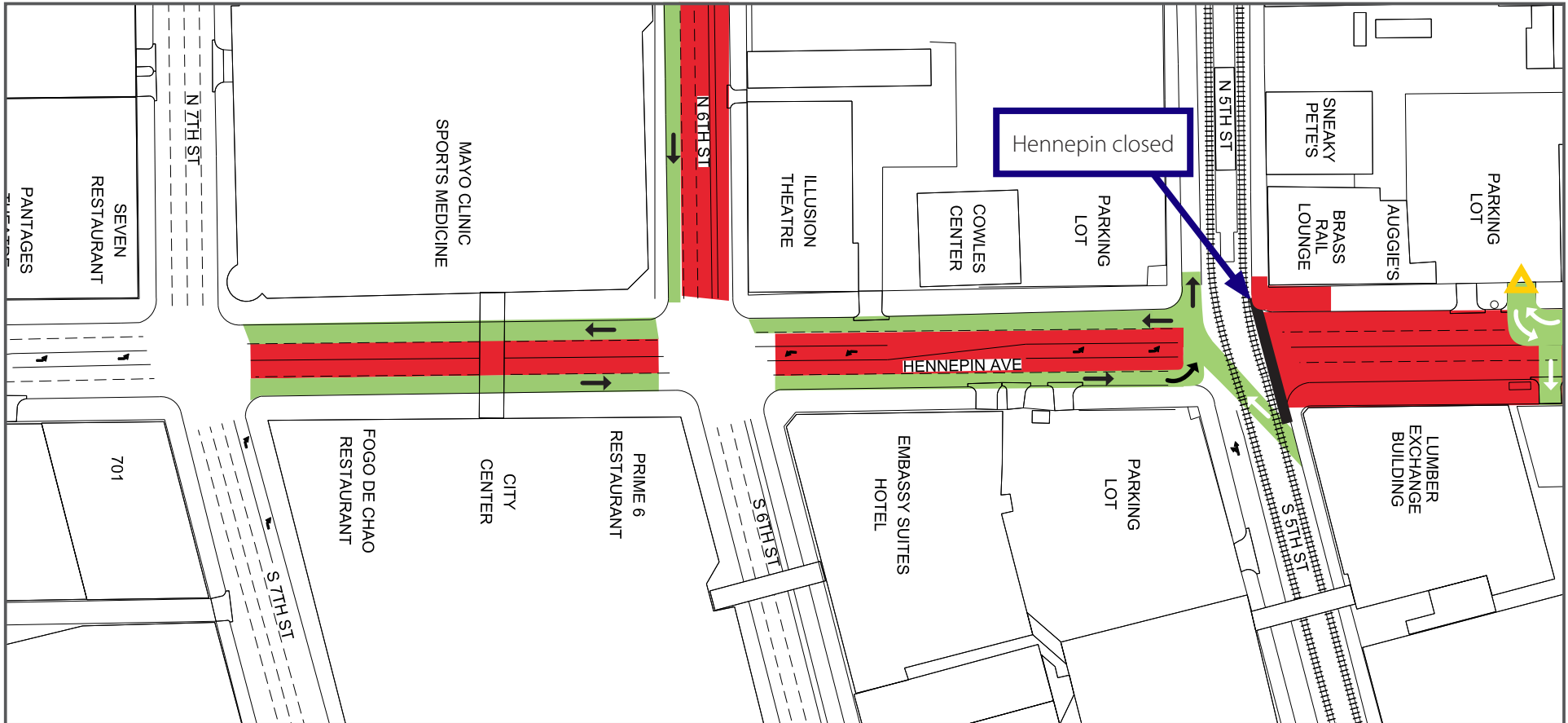


### STAY CONNECTED

- Visit the project website: [www.hennepindowntown.com](http://www.hennepindowntown.com)
- Sign up for project updates on the project website.
- Contact the project hotline with questions, comments or concerns: **612-255-4049** or email [HennepinCM@minneapolismn.gov](mailto:HennepinCM@minneapolismn.gov)




Block	Project Related Work	Anticipated Road/Pedestrian Restrictions				
		Temporary Ped Ramps	Parking Restrictions	Two Lanes Open	One Lane Open	Notes
<b>12th Street Intersection</b>						
<b>12th to 11th</b>						
<b>11th Street Intersection</b>						
<b>11th to 10th</b>						
<b>10th Street Intersection</b>						
<b>10th to 9th</b>						
<b>9th Street Intersection</b>						
<b>9th to 8th</b>						
<b>8th Street Intersection</b>						
<b>8th to 7th</b>						
<b>7th Street Intersection</b>						
<b>7th to 6th</b>	Sanitary Sewer Replacement		x			Single lane in each direction
<b>6th Street Intersection</b>	Sanitary Sewer Replacement				x	Single lane
<b>6th to 5th</b>	Sanitary Sewer Replacement		x			Single lane in each direction
<b>5th Street Intersection</b>	Concrete sidewalks and ped ramps				X	
<b>5th to 4th</b>	Street lights and irrigation work					Hennepin will be closed
<b>4th Street Intersection</b>	Xcel Energy manhole construction	X			X	Local access only
<b>4th to 3rd</b>	Street lights and irrigation work	X				Hennepin will be closed
<b>3rd Street Intersection</b>	Ped ramps, NE and SE corners and signals	X				Intersection closed
<b>3rd to Washington</b>	Street lights and irrigation work	X				Hennepin will be closed
<b>Washington Ave Intersection</b>	Ped ramp SE corner	X			X	Single lane on Washington through Sept. 10



### 7th Street to 5th Street


- Lane Closures will vary over the next couple weeks and are subject to change


 Work zone (no vehicle access)  
\*Sidewalks will be maintained

 Valet and loading zone

 Daytime non-rush hour work zone

 Work zone vehicle access maintained

 Open travel lanes

 Vehicle access - SB Hennepin only

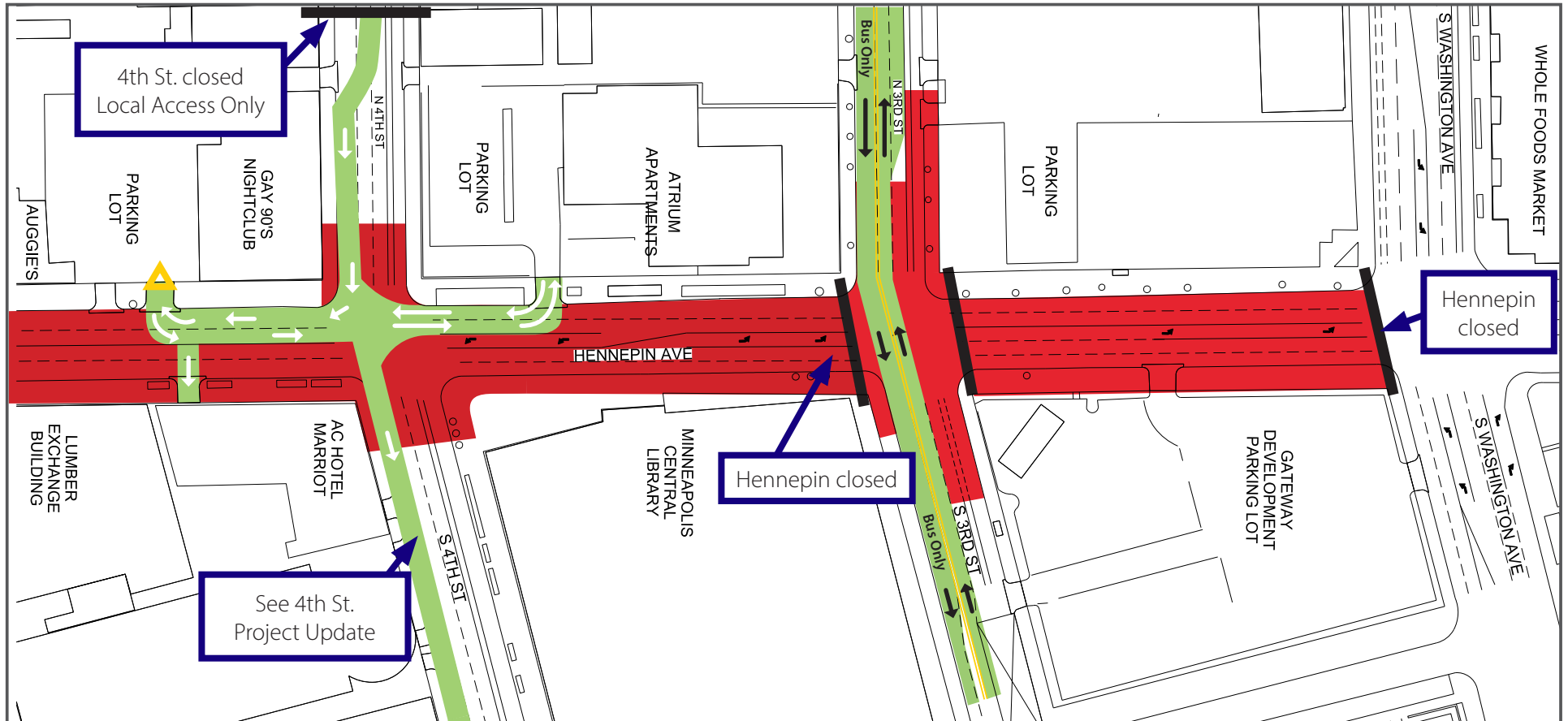
 Vehicle Access - NB Hennepin only

# HENNEPIN AVENUE

— Reconstruction Project —

## Construction Update

Volume 83: September 12 - September 18, 2021



### 4th Street to Washington Avenue

- Lane Closures will vary over the next couple weeks and are subject to change

Work zone (no vehicle access)

\*Sidewalks will be maintained

Valet and loading zone

Daytime non-rush hour work zone

Work zone vehicle access maintained

Open travel lanes

Vehicle access - SB Hennepin only

Vehicle Access - NB Hennepin only