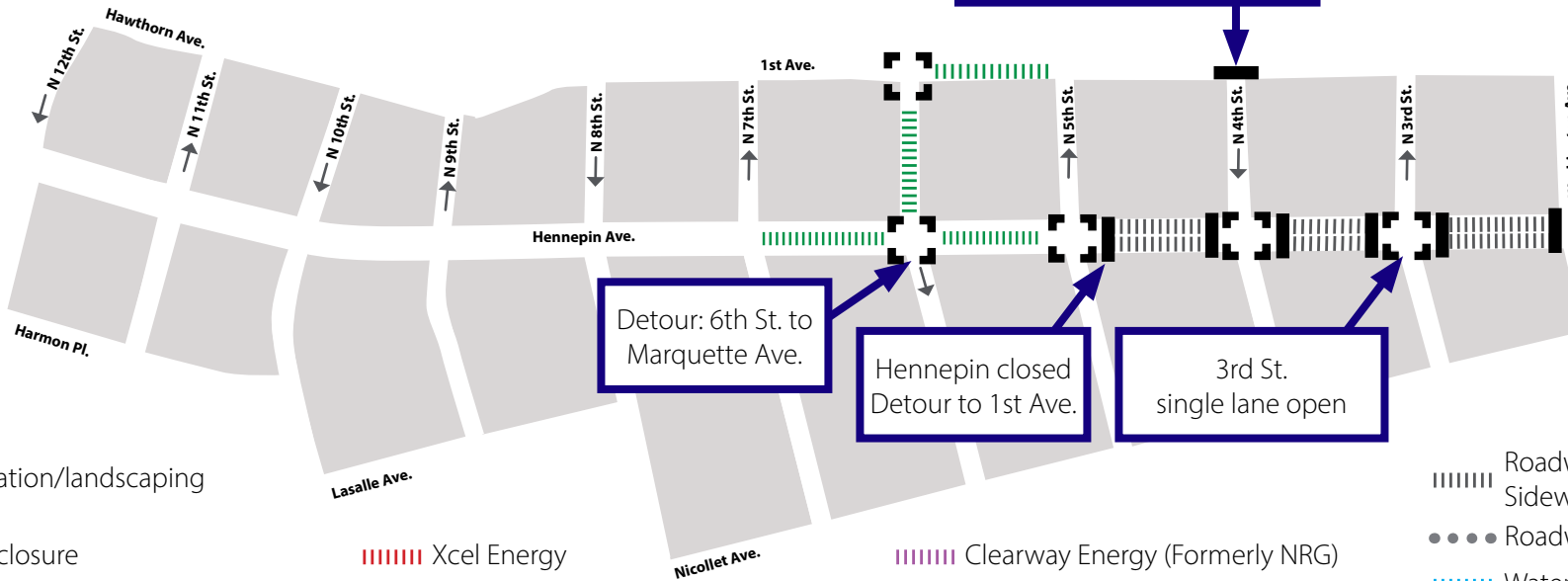


HENNEPIN AVENUE

— Reconstruction Project —

Construction Update

Volume 82: August 29 - September 4, 2021



●●● Irrigation/landscaping

□ Full closure

||||| Xcel Energy

⊞ Partial intersection reduction

||||| CenterPoint gas

||||| Clearway Energy (Formerly NRG)

||||| Telecommunications

||||| Roadway & Sidewalk work

●●● Roadway Lighting

||||| Water

||||| City sewer



WHAT'S HAPPENING

- Roadway construction is on-going from 5th to Washington. Hennepin will be closed.
- Utility construction will continue from 7th Street to 5th St. This work will continue throughout 2021.
- Utility construction will consist of both Public and Private utility improvements, upgrades, expansion, relocations and replacements.
- Private development work will have lane closures on Hennepin between 3rd and Washington as well as on 3rd Street.



WHAT TO EXPECT

- Public and private utility work requiring the use of heavy equipment that will increase noise, vibration, and dust in work areas.
- Vehicle traffic congestion accompanying lane restrictions on Hennepin Ave. between 13th St and Washington Ave. Traffic will be reduced to one lane in each direction for the duration of utility construction. Lane restrictions will vary by block based on construction activity.
- Pedestrian detours as needed to facilitate construction needs. Greater impacts can be expected at intersections where work is occurring.
- Business access will remain open during the construction activity.
- Changes to Metro Transit. All Buses are detoured to Nicollet Mall. Visit Metro Transit website for specific route information.
- No left turns on or off Hennepin Ave. in certain locations.
- Cross streets will be reduced to one lane at times.
- Increased traffic congestion on 1st Ave. and Washington Ave. detour routes.

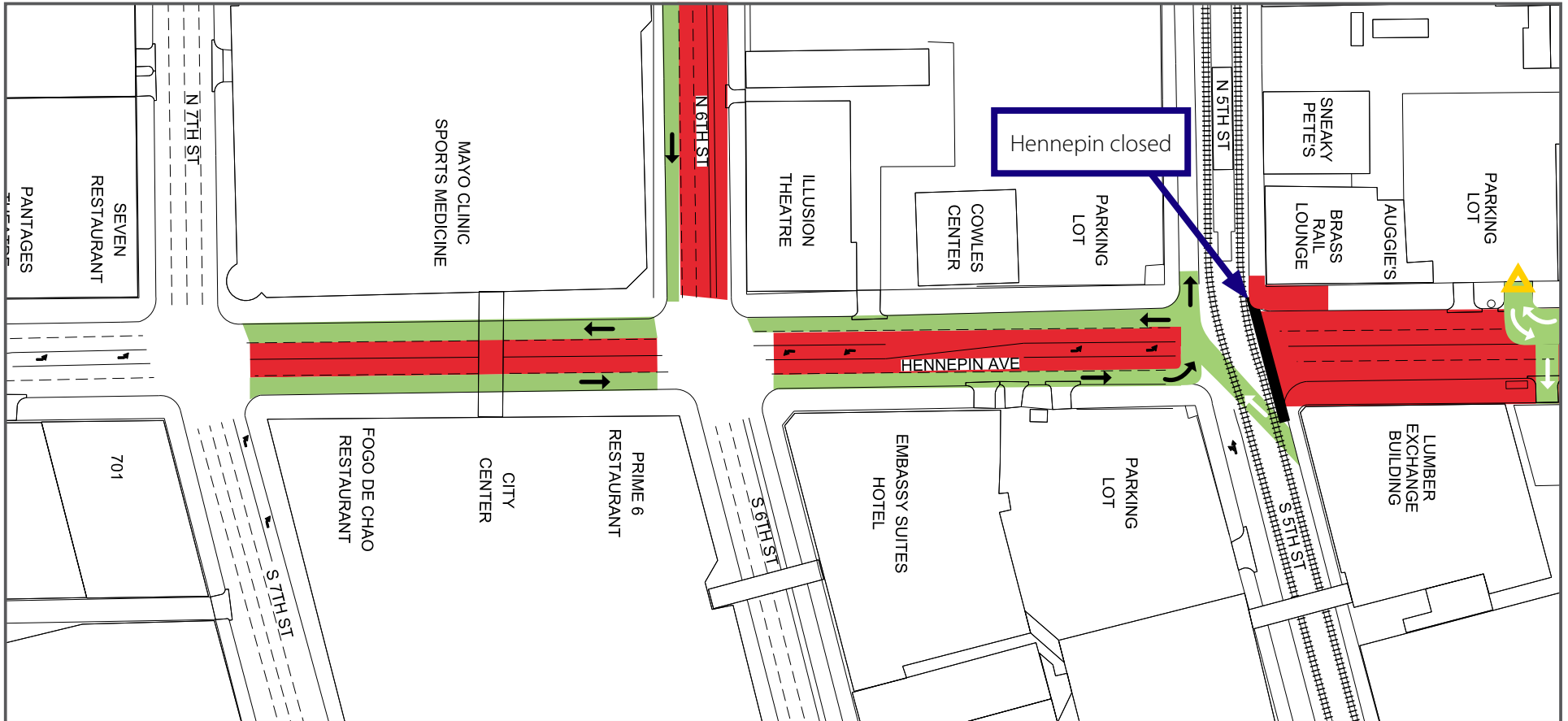


STAY CONNECTED

- Visit the project website: www.hennepindowntown.com
- Sign up for project updates on the project website.
- Contact the project hotline with questions, comments or concerns: **612-255-4049** or email HennepinCM@minneapolismn.gov



Block	Project Related Work	Anticipated Road/Pedestrian Restrictions				
		Temporary Ped Ramps	Parking Restrictions	Two Lanes Open	One Lane Open	Notes
12th Street Intersection						
12th to 11th						
11th Street Intersection						
11th to 10th						
10th Street Intersection						
10th to 9th						
9th Street Intersection						
9th to 8th						
8th Street Intersection						
8th to 7th						
7th Street Intersection						
7th to 6th	Sanitary Sewer Replacement		x			Single lane in each direction
6th Street Intersection	Sanitary Sewer Replacement				x	Single lane
6th to 5th	Sanitary Sewer Replacement		x			Single lane in each direction
5th Street Intersection	Concrete sidewalks and ped ramps				X	
5th to 4th	Street lights					Hennepin will be closed
4th Street Intersection	Xcel Energy manhole construction	X			X	Local access only
4th to 3rd	Street lights	X				Hennepin will be closed
3rd Street Intersection	Ped ramps, NE and SE corners and signals	X				Intersection closed
3rd to Washington	Sidewalk on east side	X				Hennepin will be closed
Washington Ave Intersection	Ped ramp SE corner	X			X	Single lane on Washington through Sept. 10



7th Street to 5th Street

- Lane Closures will vary over the next couple weeks and are subject to change

Work zone (no vehicle access)
*Sidewalks will be maintained

Valet and loading zone

Daytime non-rush hour work zone

Work zone vehicle access maintained

Open travel lanes

Vehicle access - SB Hennepin only

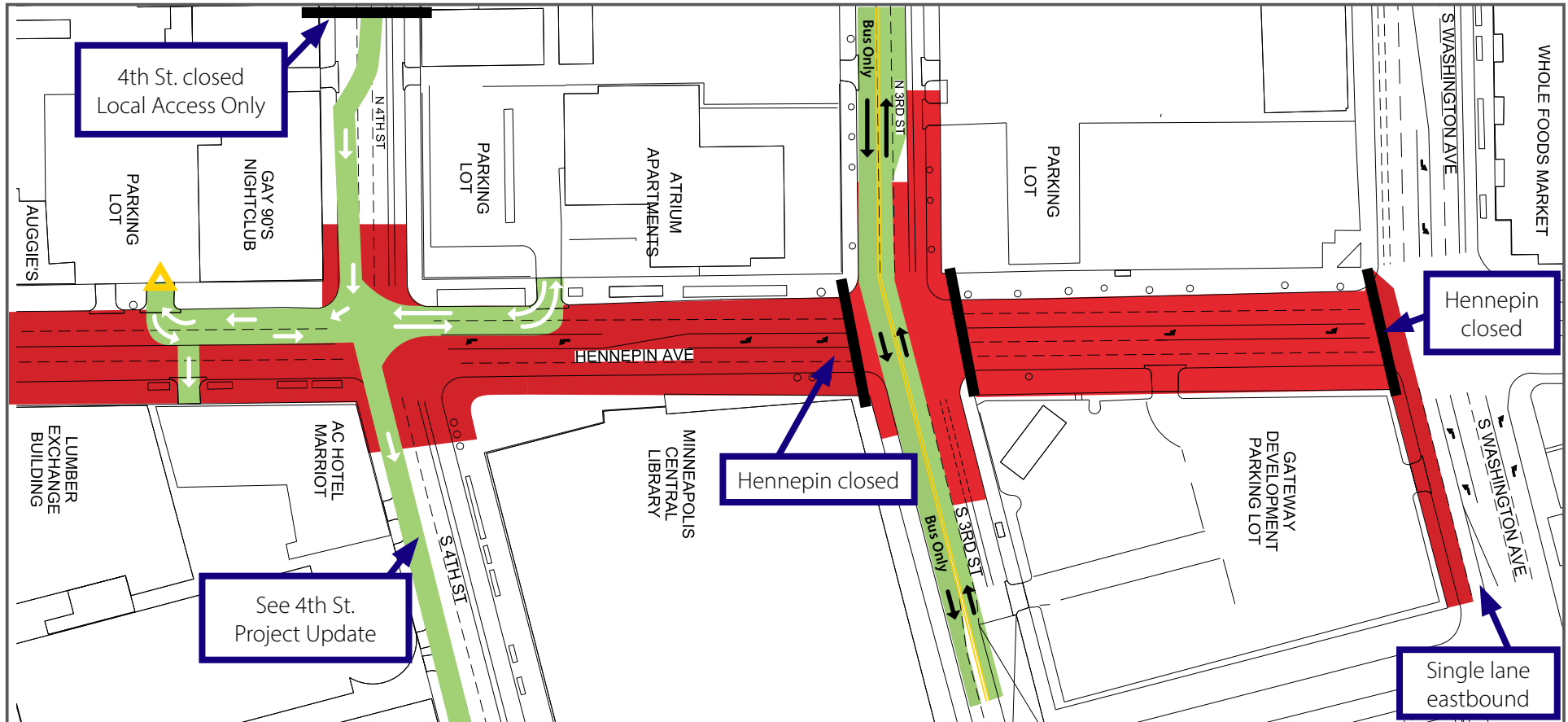
Vehicle Access - NB Hennepin only

HENNEPIN AVENUE

— Reconstruction Project —


Construction Update

Volume 82: August 29 - September 4, 2021

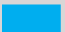



4th Street to Washington Avenue


- Lane Closures will vary over the next couple weeks and are subject to change


 Work zone (no vehicle access)


*Sidewalks will be maintained


 Valet and loading zone

 Daytime non-rush hour work zone

 Work zone vehicle access maintained

 Open travel lanes

 Vehicle access - SB Hennepin only

 Vehicle Access - NB Hennepin only