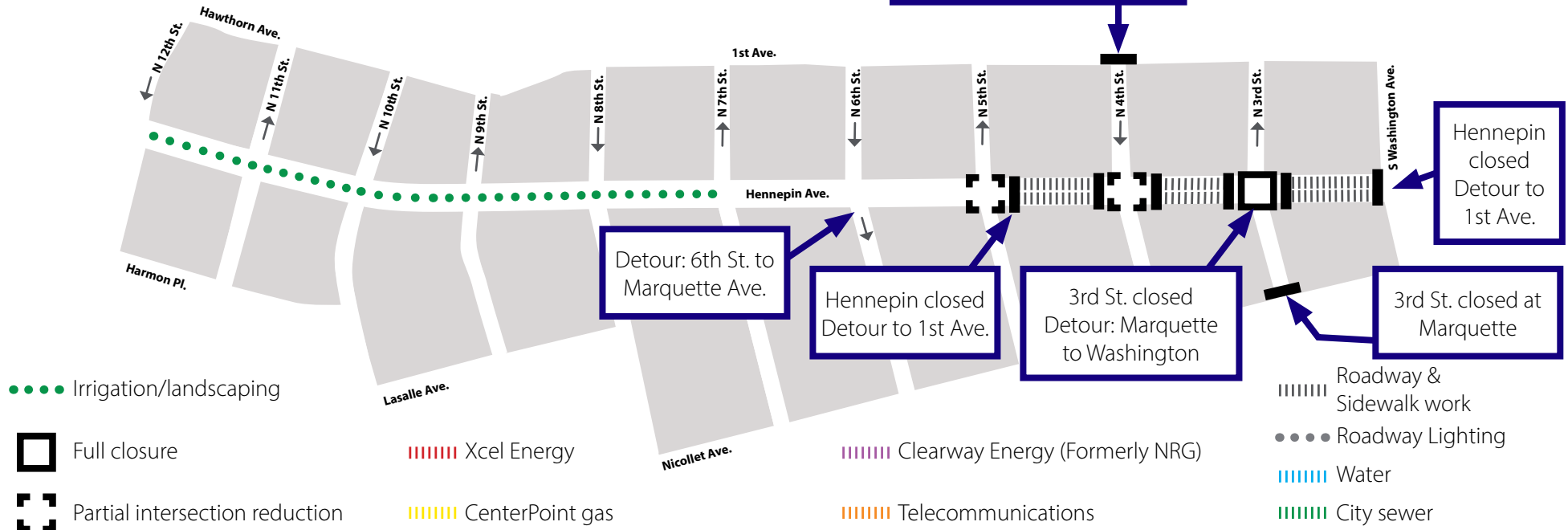


# HENNEPIN AVENUE

— Reconstruction Project —

**Construction Update**  
Volume 70: June 6 – June 12, 2021



## WHAT'S HAPPENING

- Roadway construction is on-going from 5th to Washington. Hennepin will be closed.
- Utility construction will continue from 7th Street to 5th St. This work will continue throughout 2021.
- Utility construction will consist of both Public and Private utility improvements, upgrades, expansion, relocations and replacements.
- Private development work will have lane closures on Hennepin between 3rd and Washington as well as on 3rd Street.



## WHAT TO EXPECT

- Public and private utility work requiring the use of heavy equipment that will increase noise, vibration, and dust in work areas.
- Vehicle traffic congestion accompanying lane restrictions on Hennepin Ave. between 13th St and Washington Ave. Traffic will be reduced to one lane in each direction for the duration of utility construction. Lane restrictions will vary by block based on construction activity.
- Pedestrian detours as needed to facilitate construction needs. Greater impacts can be expected at intersections where work is occurring.
- Business access will remain open during the construction activity.
- Changes to Metro Transit. All Buses are detoured to Nicollet Mall. Visit Metro Transit website for specific route information.
- No left turns on or off Hennepin Ave. in certain locations.
- Cross streets will be reduced to one lane at times.
- Increased traffic congestion on 1st Ave. and Washington Ave. detour routes.



## STAY CONNECTED

- Visit the project website: [www.hennepindowntown.com](http://www.hennepindowntown.com)
- Sign up for project updates on the project website.
- Contact the project hotline with questions, comments or concerns: **612-255-4049** or email [HennepinCM@minneapolismn.gov](mailto:HennepinCM@minneapolismn.gov)



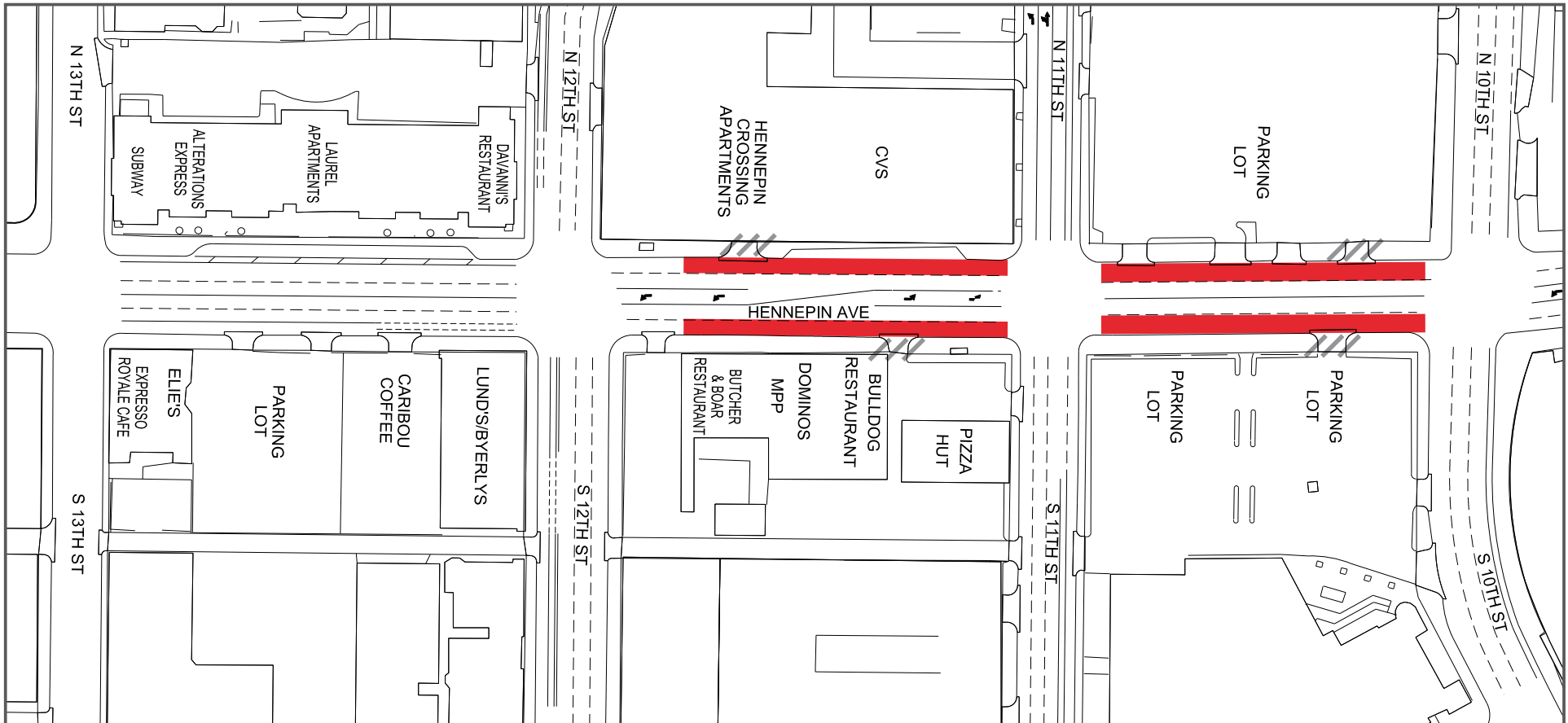
Block	Project Related Work	Anticipated Road/Pedestrian Restrictions				
		Temporary Ped Ramps	Parking Restrictions	Two Lanes Open	One Lane Open	Notes
<b>12th Street Intersection</b>						
<b>12th to 11th</b>	Planting and railing work			X		Single lane closures
<b>11th Street Intersection</b>						
<b>11th to 10th</b>	Planting and railing work			X		Single lane closures
<b>10th Street Intersection</b>						
<b>10th to 9th</b>	Planting and railing work			X		Single lane closures
<b>9th Street Intersection</b>						
<b>9th to 8th</b>	Planting and railing work			X		Single lane closures
<b>8th Street Intersection</b>						
<b>8th to 7th</b>	Planting and railing work			X		Single lane closures
<b>7th Street Intersection</b>						
<b>7th to 6th</b>						
<b>6th Street Intersection</b>						
<b>6th to 5th</b>						
<b>5th Street Intersection</b>					X	
<b>5th to 4th</b>	Sidewalk work and concrete paving					Hennepin will be closed
<b>4th Street Intersection</b>	Signals and red ramps	X			X	Local access only
<b>4th to 3rd</b>	Sidewalk work and concrete paving	X				Hennepin will be closed
<b>3rd Street Intersection</b>	Storm sewer and pavement removal	X				Intersection closed
<b>3rd to Washington</b>	Storm sewer and pavement removal					Hennepin will be closed
<b>Washington Ave Intersection</b>	Storm sewer	X				

# HENNEPIN AVENUE

— Reconstruction Project —

## Construction Update

Volume 70: June 6 – June 12, 2021



### 13th Street to 10th Street

- Lane Closures will vary over the next couple weeks and are subject to change

Work zone (no vehicle access)

\*Sidewalks will be maintained

Valet and loading zone

Daytime non-rush hour work zone

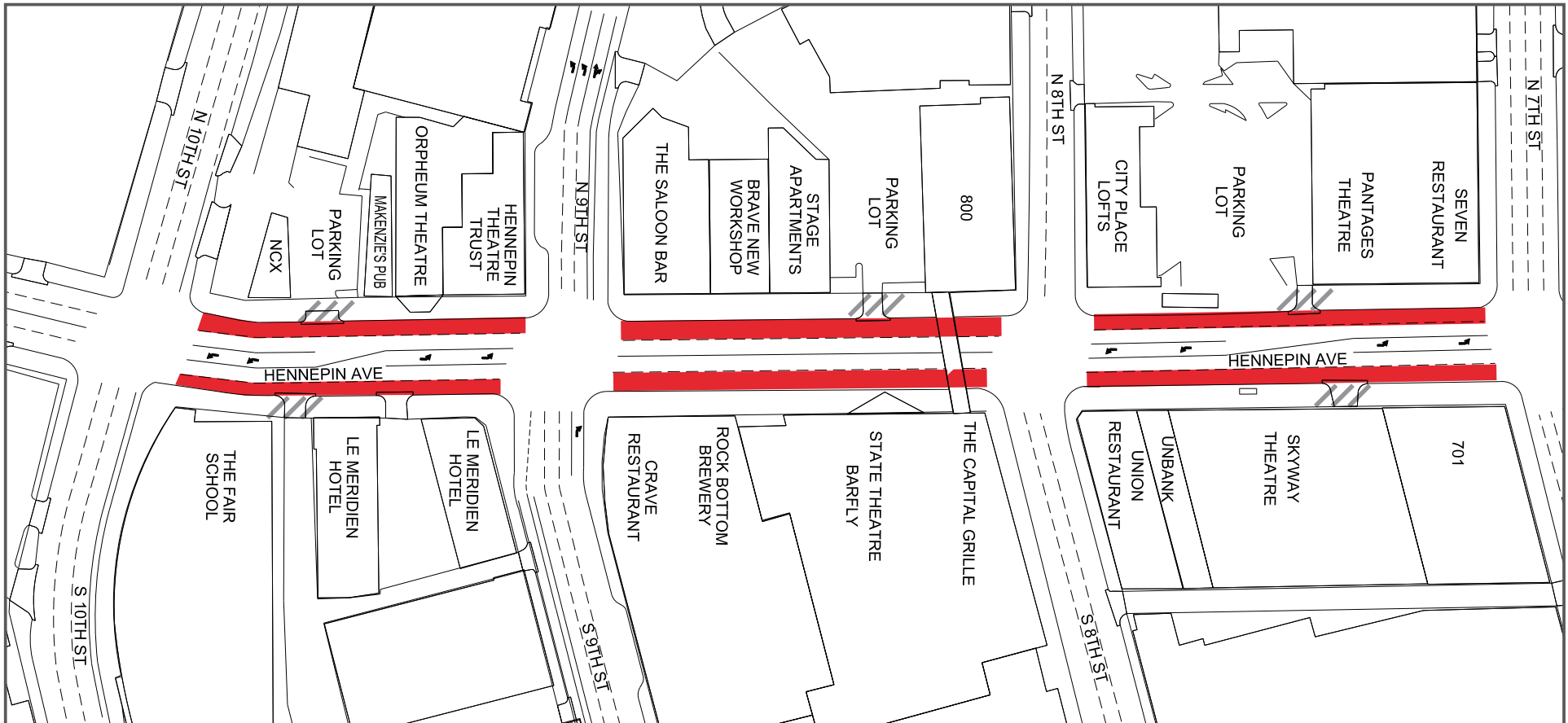
Work zone vehicle access maintained

Open travel lanes

Vehicle access - SB Hennepin only


Vehicle Access - NB Hennepin only


Full closure





### 10th Street to 7th Street

- Lane Closures will vary over the next couple weeks and are subject to change


 Work zone (no vehicle access)  
\*Sidewalks will be maintained


 Valet and loading zone

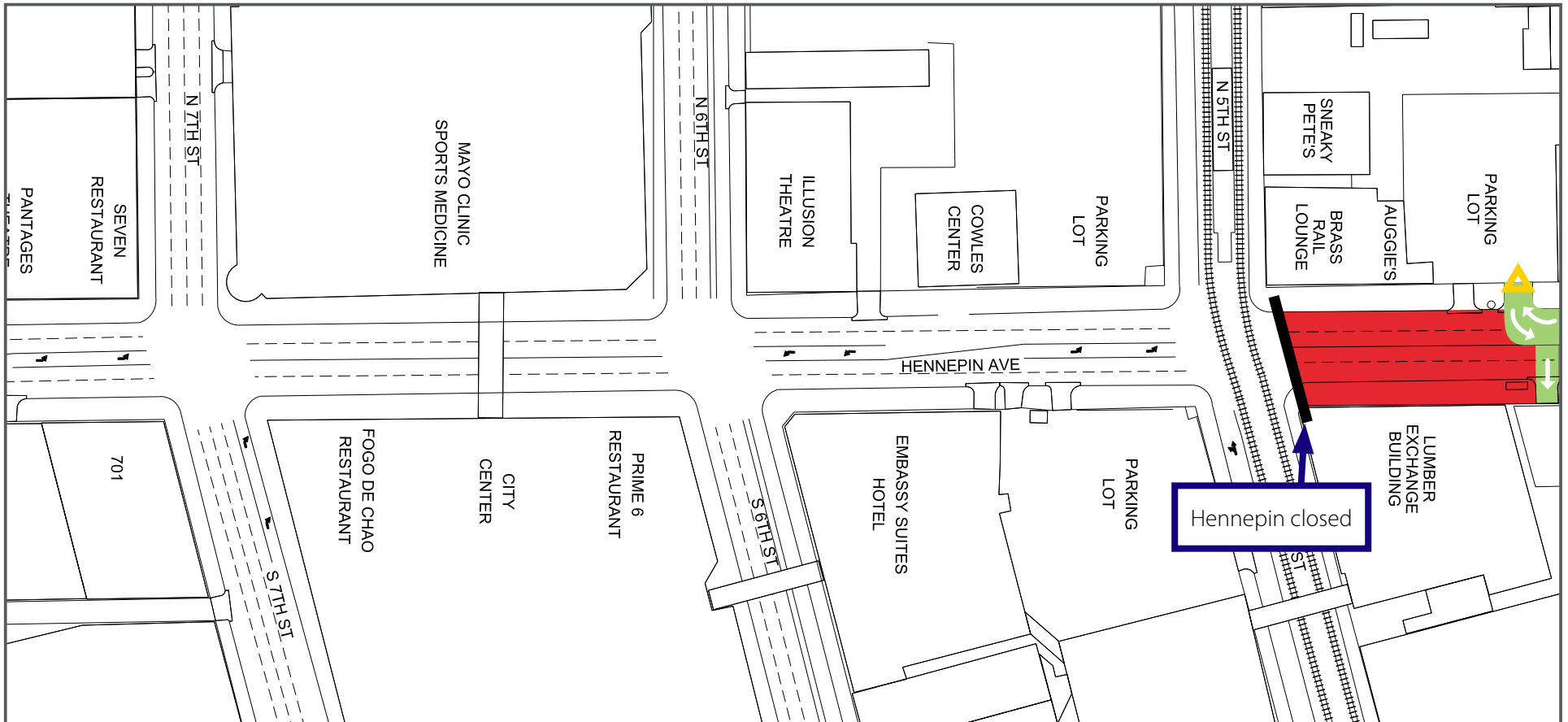
 Daytime non-rush hour work zone

 Work zone vehicle access maintained

 Open travel lanes

 Vehicle access - SB Hennepin only

 Vehicle Access - NB Hennepin only



### 7th Street to 5th Street

- Lane Closures will vary over the next couple weeks and are subject to change

Work zone (no vehicle access)  
\*Sidewalks will be maintained

Valet and loading zone

Daytime non-rush hour work zone

Work zone vehicle access maintained

Open travel lanes

Vehicle access - SB Hennepin only

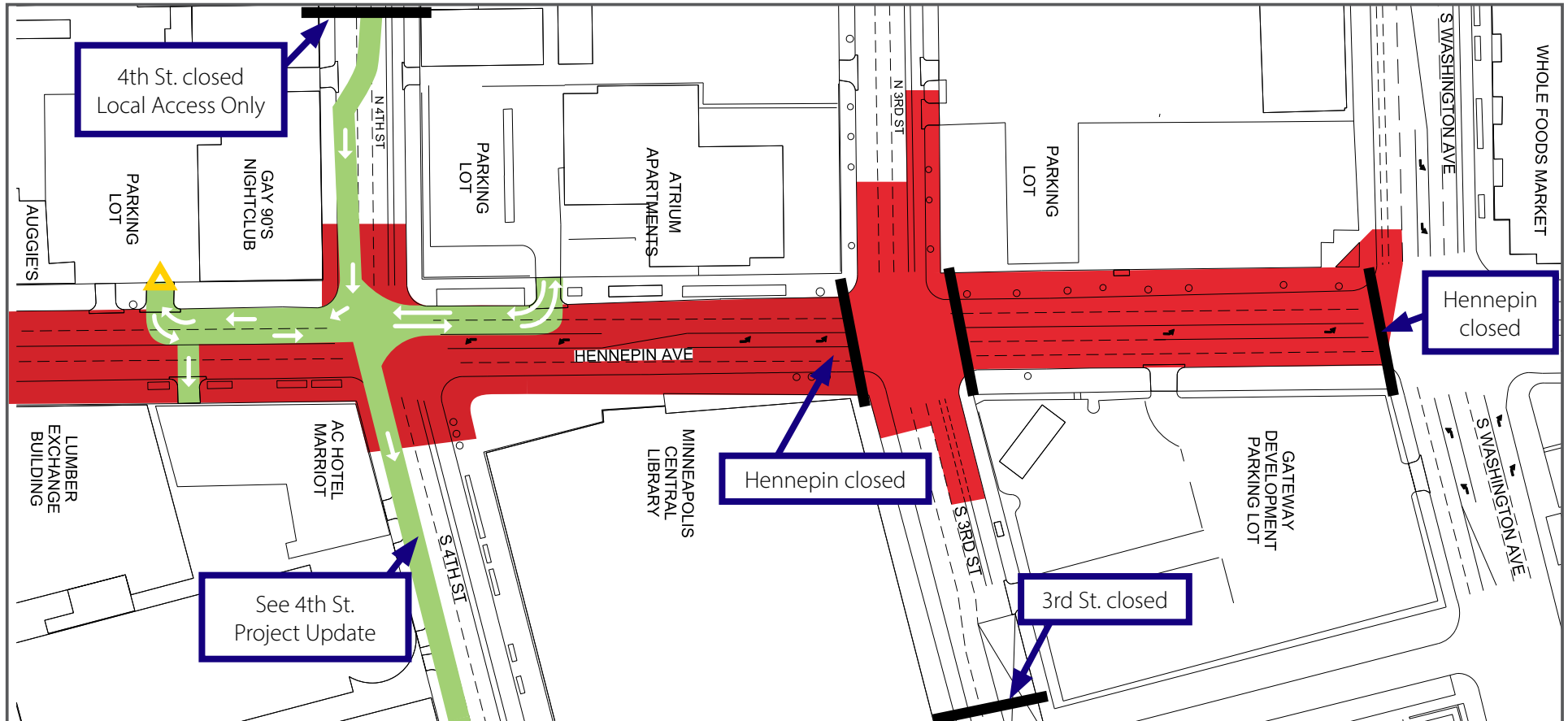
Vehicle Access - NB Hennepin only

# HENNEPIN AVENUE

— Reconstruction Project —

## Construction Update

Volume 70: June 6 – June 12, 2021



### 4th Street to Washington Avenue

- Lane Closures will vary over the next couple weeks and are subject to change

Work zone (no vehicle access)

\*Sidewalks will be maintained

Valet and loading zone

Daytime non-rush hour work zone

Work zone vehicle access maintained

Open travel lanes

Vehicle access - SB Hennepin only

Vehicle Access - NB Hennepin only