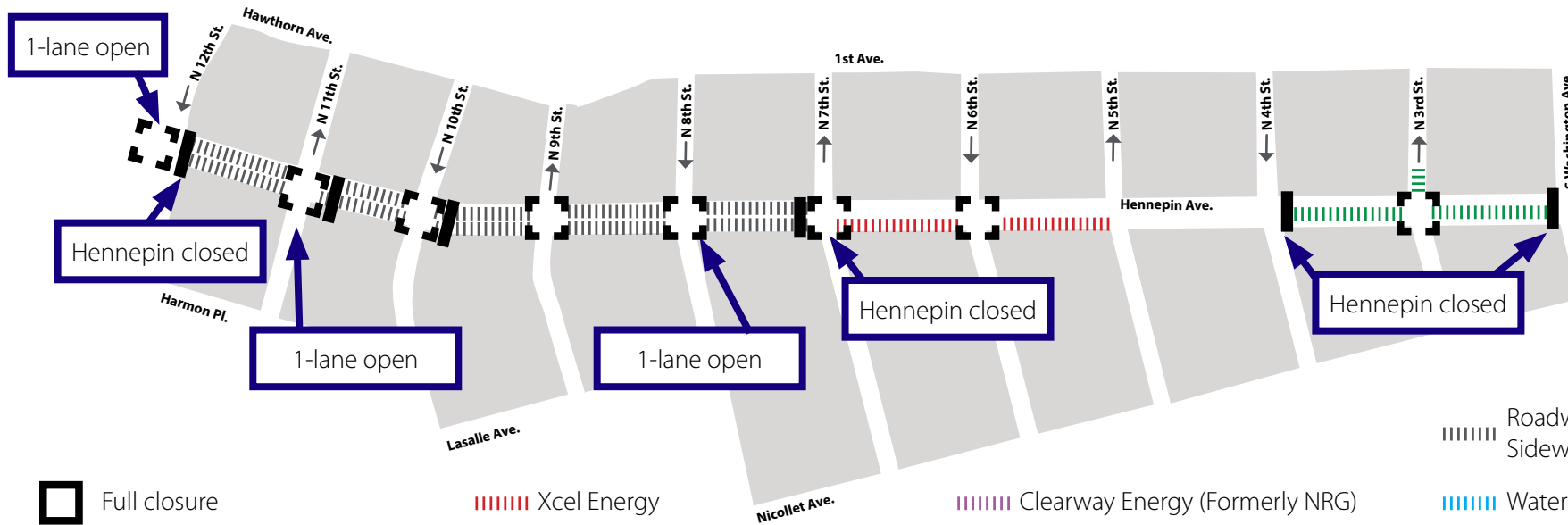


# HENNEPIN AVENUE

— Reconstruction Project —

## Construction Update

Volume 49: September 13 – September 19, 2020



Full closure

Xcel Energy

Clearway Energy (Formerly NRG)

Roadway & Sidewalk work

Partial intersection reduction

CenterPoint gas

Telecommunications

Water

City sewer



### WHAT'S HAPPENING

- Utility construction will continue from 7th Street to Washington. This work will continue throughout 2020.
- Utility construction will consist of both Public and Private utility improvements, upgrades, expansion, relocations and replacements.
- Sanitary sewer replacement will continue between 5th and Washington until late fall 2020. There will be full closure of Hennepin from 4th to Washington.
- Xcel Energy will continue work between 4th and 7th.
- Roadwork will continue until Fall 2020 and full-closure of Hennepin between 7th and 12th Street. Local access only to parking ramps/lots.
- All intersections will be restricted or have lane closures throughout the summer and fall.
- Pedestrian detours will be set up at all intersections with some crosswalks closed.



### WHAT TO EXPECT

- Public and private utility work requiring the use of heavy equipment that will increase noise, vibration, and dust in work areas.
- Vehicle traffic congestion accompanying lane restrictions on Hennepin Ave. between 13th St and Washington Ave. Traffic will be reduced to one lane in each direction for the duration of utility construction. Lane restrictions will vary by block based on construction activity.
- Pedestrian detours as needed to facilitate construction needs. Greater impacts can be expected at intersections where work is occurring.
- Business access will remain open during the construction activity.
- Changes to Metro Transit. All Buses are detoured to Nicollet Mall. Visit Metro Transit website for specific route information.
- No left turns on or off Hennepin Ave. in certain locations.
- Cross streets will be reduced to one lane at times.

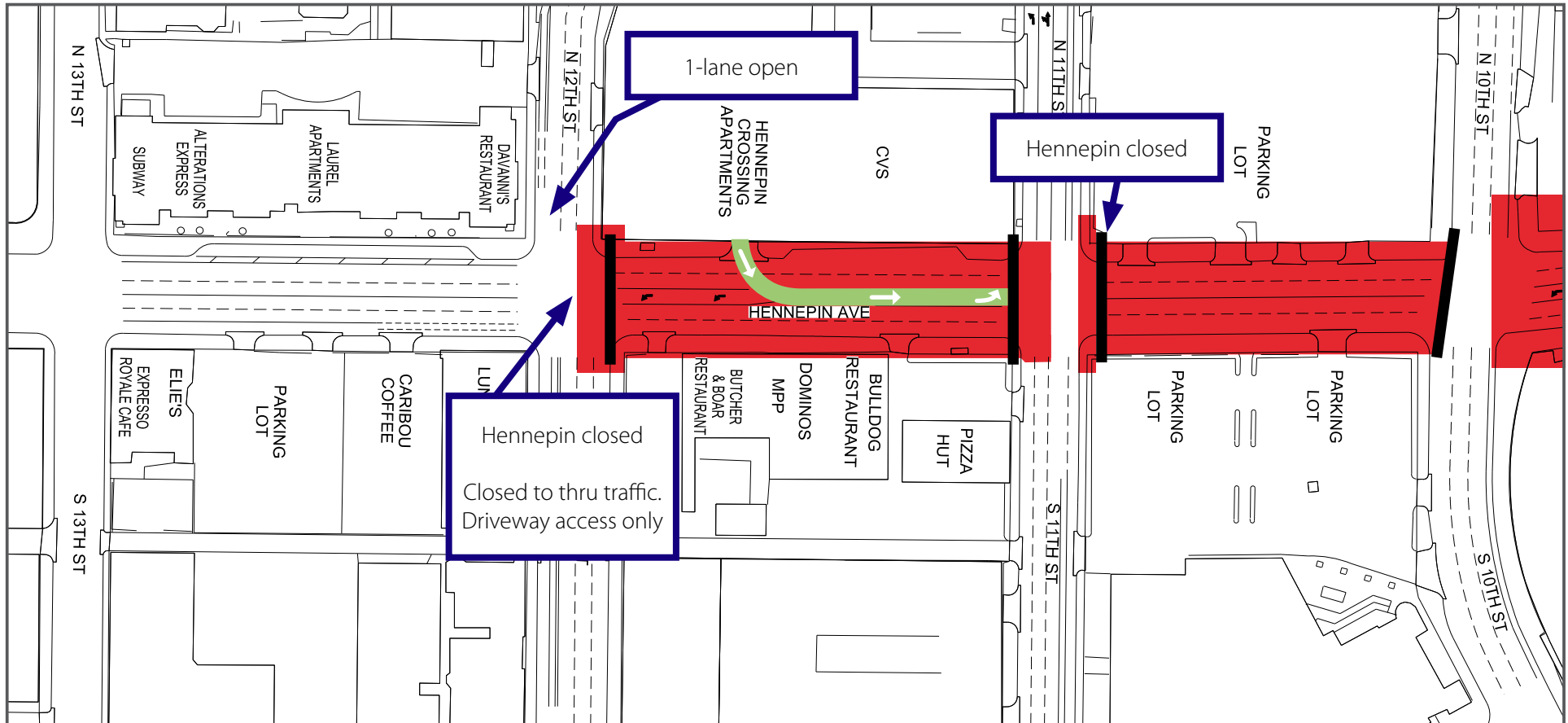


### STAY CONNECTED

- Visit the project website: [www.hennepindowntown.com](http://www.hennepindowntown.com)
- Sign up for project updates on the project website.
- Contact the project hotline with questions, comments or concerns: **612-255-4049** or email [HennepinCM@minneapolismn.gov](mailto:HennepinCM@minneapolismn.gov)



Block	Project Related Work	Anticipated Road/Pedestrian Restrictions				Notes
		Temporary Ped Ramps	Parking Restrictions	Two Lanes Open	One Lane Open	
<b>12th Street Intersection</b>	Electrical and sidewalk paving	X	X		X	
<b>12th to 11th</b>	Electrical and sidewalk	X	X			Hennepin will be closed
<b>11th Street Intersection</b>	Concrete paving and sidewalks	X			X	
<b>11th to 10th</b>	Electrical and bus stop					Hennepin will be closed
<b>10th Street Intersection</b>	Pavement, sidewalks and pedestrian ramps	X		X		
<b>10th to 9th</b>	Sidewalk					Hennepin will be closed
<b>9th Street Intersection</b>	Pedestrian ramps and sidewalk	X		X		
<b>9th to 8th</b>	Sidewalk and planters	X				Hennepin will be closed
<b>8th Street Intersection</b>	Pedestrian ramps and Metro Transit project	X			X	
<b>8th to 7th</b>	Sidewalk and bus stops	X				Hennepin will be closed
<b>7th Street Intersection</b>						
<b>7th to 6th</b>	Xcel cable work		X			Hennepin will be reduced to 1-lane in each direction
<b>6th Street Intersection</b>	Xcel cable work				X	
<b>6th to 5th</b>	Xcel cable work		X	X		Hennepin will be reduced to 1-lane in each direction
<b>5th Street Intersection</b>						
<b>5th to 4th</b>						
<b>4th Street Intersection</b>						
<b>4th to 3rd</b>	Sanitary sewer replacement					Hennepin will be closed
<b>3rd Street Intersection</b>	Sanitary sewer replacement			X		
<b>3rd to Washington</b>	Sanitary sewer replacement					Hennepin will be closed
<b>Washington Ave Intersection</b>	Sanitary sewer replacement					



### 13th Street to 10th Street

- Lane Closures will vary over the next couple weeks and are subject to change

Work zone (no vehicle access)

\*Sidewalks will be maintained

Valet and loading zone

Daytime non-rush hour work zone

Work zone vehicle access maintained

Open travel lanes

Vehicle access - SB Hennepin only

Vehicle Access - NB Hennepin only

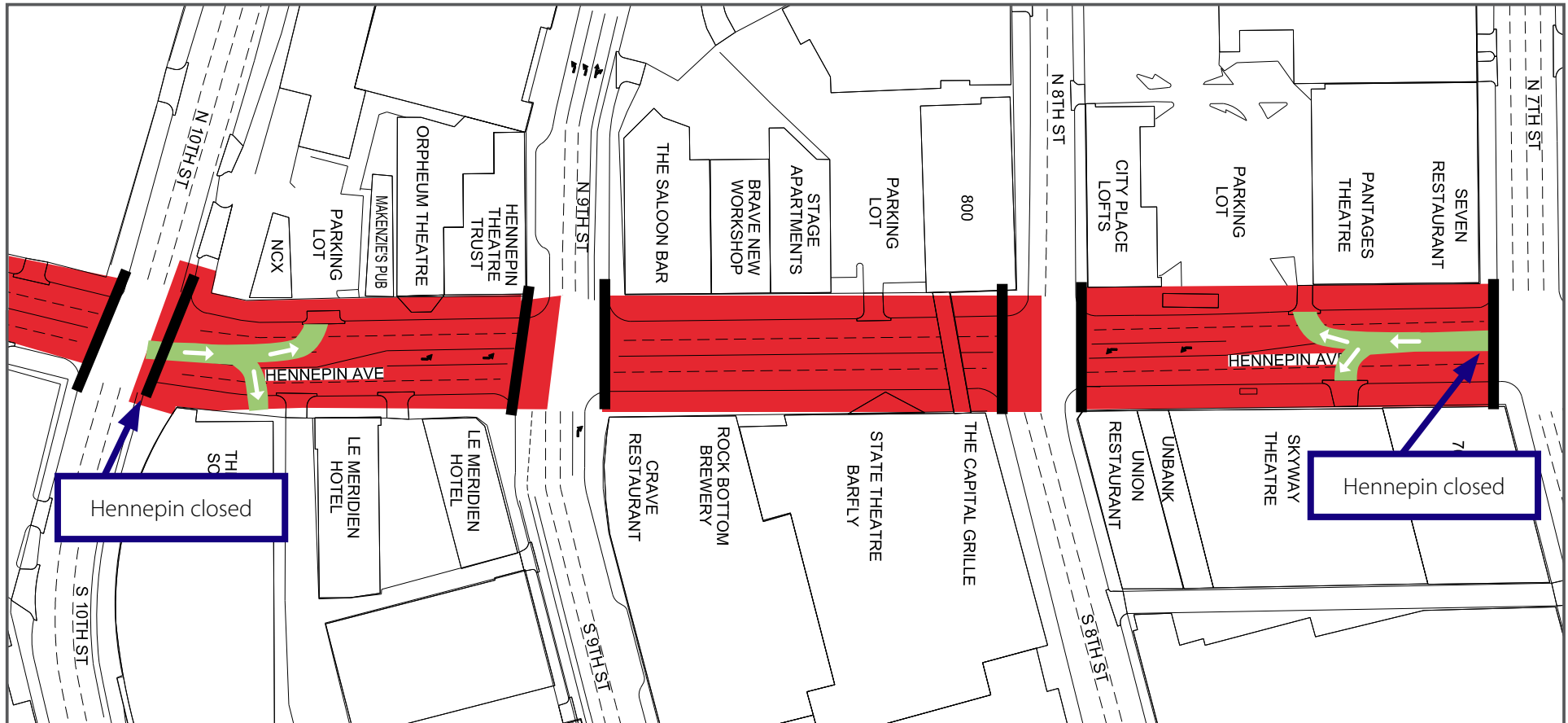
Full closure

# HENNEPIN AVENUE

— Reconstruction Project —


## Construction Update

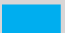
Volume 49: September 13 – September 19, 2020





### 10th Street to 7th Street


- Lane Closures will vary over the next couple weeks and are subject to change


 Work zone (no vehicle access)  
\*Sidewalks will be maintained


 Valet and loading zone

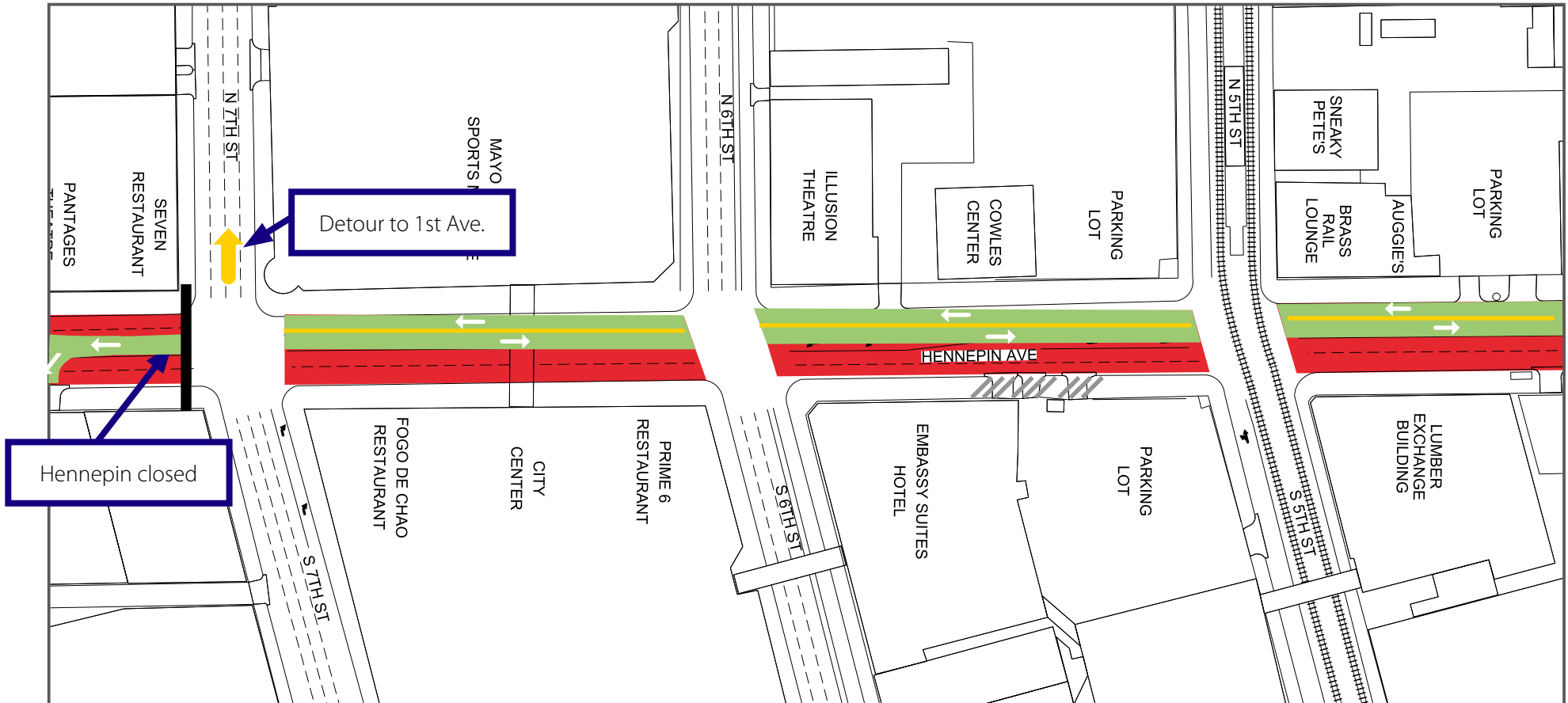
 Daytime non-rush hour work zone

 Work zone vehicle access maintained

 Open travel lanes

 Vehicle access - SB Hennepin only

 Vehicle Access - NB Hennepin only



### 7th Street to 5th Street

- Lane Closures will vary over the next couple weeks and are subject to change

Work zone (no vehicle access)

\*Sidewalks will be maintained

Valet and loading zone

Daytime non-rush hour work zone

Work zone vehicle access maintained

Open travel lanes

Vehicle access - SB Hennepin only

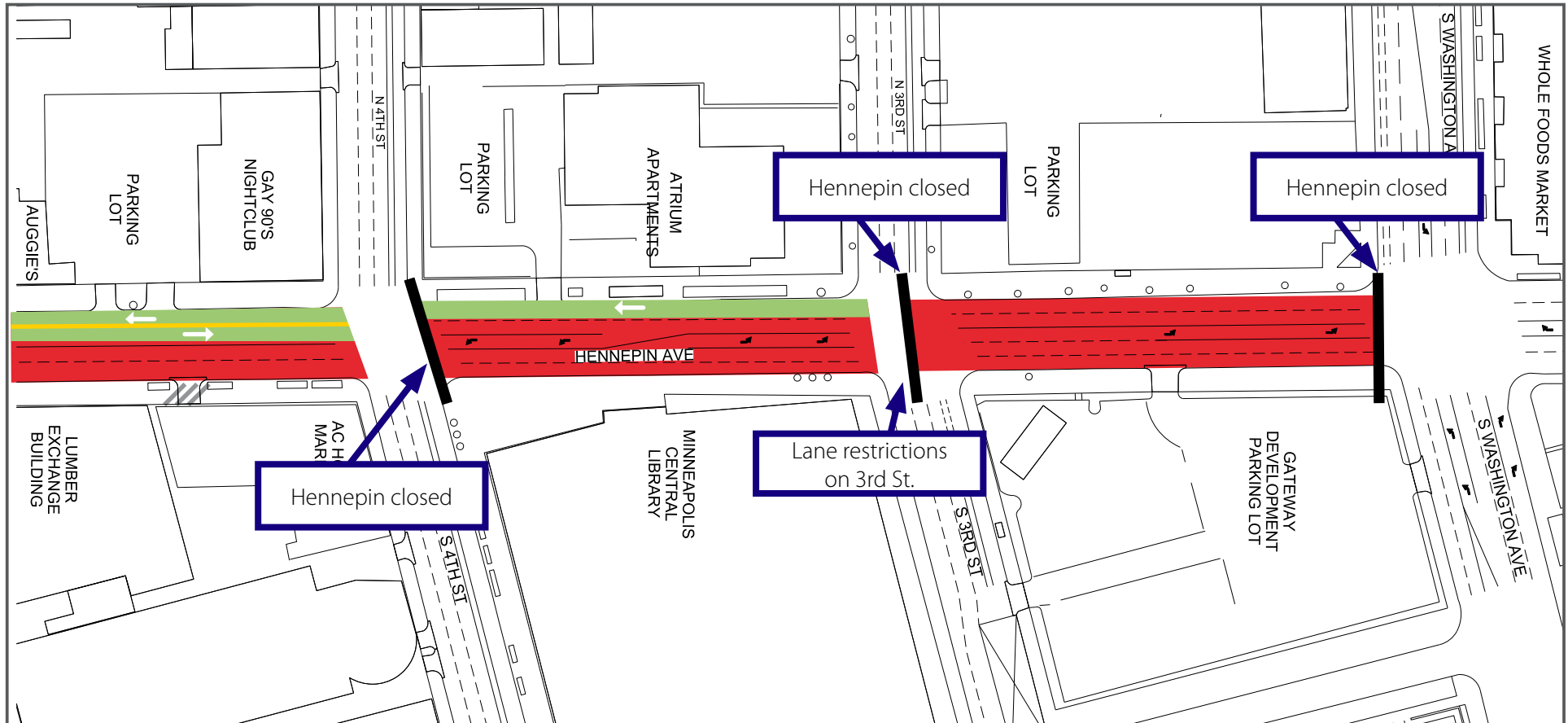
Vehicle Access - NB Hennepin only

# HENNEPIN AVENUE

— Reconstruction Project —


## Construction Update

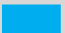
Volume 49: September 13 – September 19, 2020




### 4th Street to Washington Avenue


- Lane Closures will vary over the next couple weeks and are subject to change


 Work zone (no vehicle access)  
\*Sidewalks will be maintained


 Valet and loading zone

 Daytime non-rush hour work zone

 Work zone vehicle access maintained

 Open travel lanes

 Vehicle access - SB Hennepin only

 Vehicle Access - NB Hennepin only