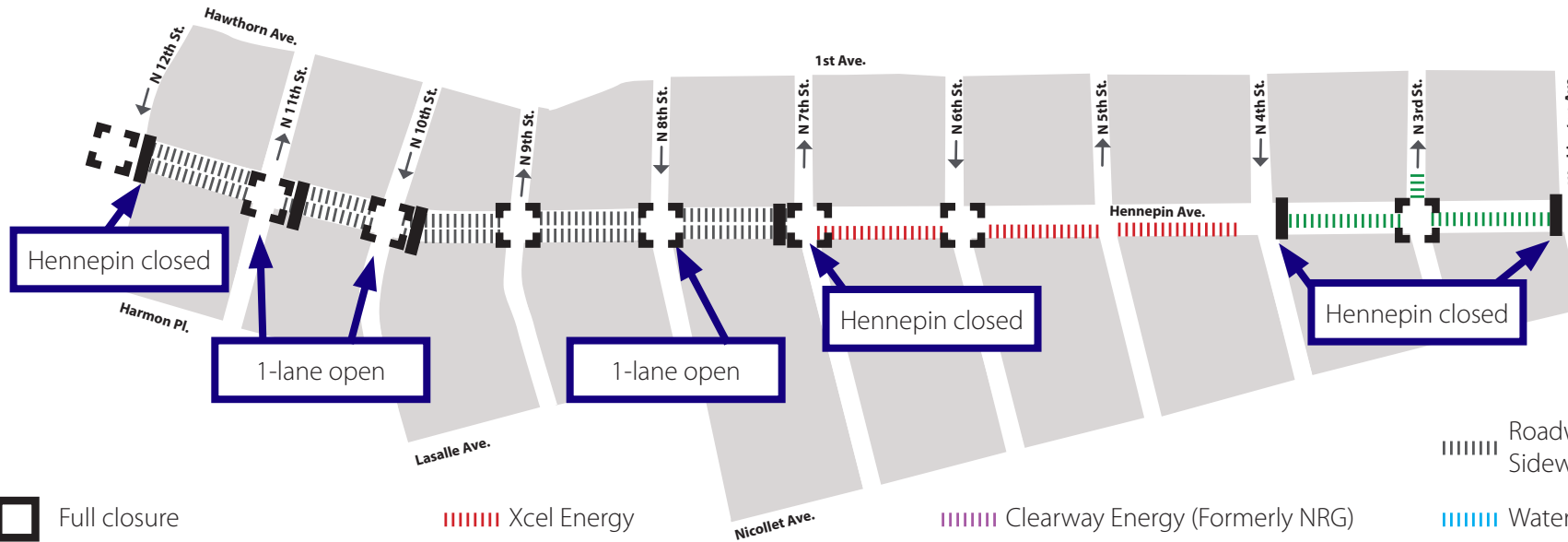


HENNEPIN AVENUE

— Reconstruction Project —

Construction Update
Volume 45: August 16 – August 22, 2020



Full closure

Xcel Energy

Clearway Energy (Formerly NRG)

Water

Partial intersection reduction

CenterPoint gas

Telecommunications

City sewer

Roadway & Sidewalk work



WHAT'S HAPPENING

- Utility construction will continue from 7th Street to Washington. This work will continue throughout 2020.
- Utility construction will consist of both Public and Private utility improvements, upgrades, expansion, relocations and replacements.
- Xcel Energy will continue work between 4th and 7th.
- Roadwork will continue until Fall 2020 and full-closure of Hennepin between 7th and 12th Street. Local access only to parking ramps/lots.
- All intersections will be restricted or have lane closures throughout the summer.
- Pedestrian detours will be set up at all intersections with some crosswalks closed.



WHAT TO EXPECT

- Public and private utility work requiring the use of heavy equipment that will increase noise, vibration, and dust in work areas.
- Vehicle traffic congestion accompanying lane restrictions on Hennepin Ave. between 13th St and Washington Ave. Traffic will be reduced to one lane in each direction for the duration of utility construction. Lane restrictions will vary by block based on construction activity.
- Pedestrian detours as needed to facilitate construction needs. Greater impacts can be expected at intersections where work is occurring.
- Business access will remain open during the construction activity.
- Changes to Metro Transit. All Buses are detoured to Nicollet Mall. Visit Metro Transit website for specific route information.
- No left turns on or off Hennepin Ave. in certain locations.
- Cross streets will be reduced to one lane at times.

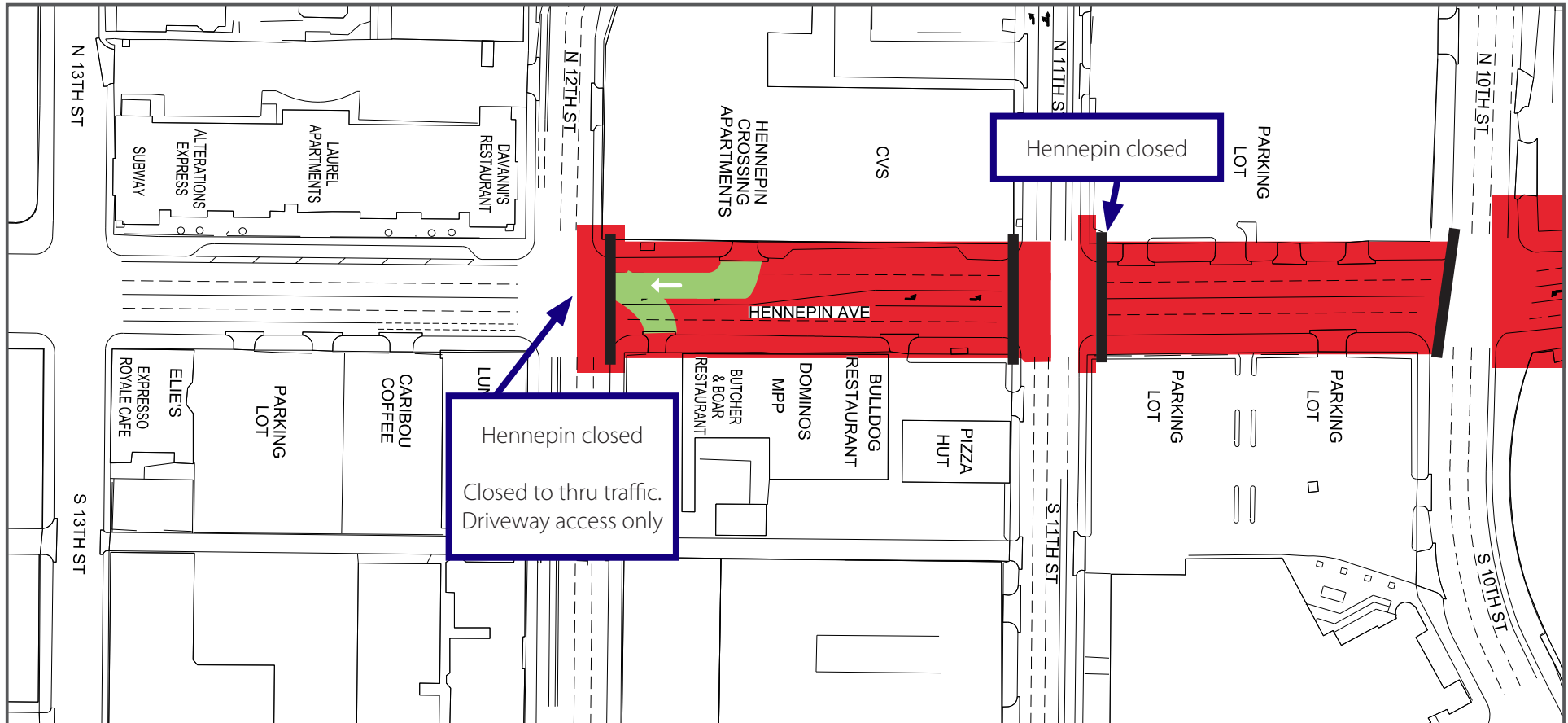


STAY CONNECTED

- Visit the project website: www.hennepindowntown.com
- Sign up for project updates on the project website.
- Contact the project hotline with questions, comments or concerns: **612-255-4049** or email HennepinCM@minneapolismn.gov



Block	Project Related Work	Anticipated Road/Pedestrian Restrictions				Notes
		Temporary Ped Ramps	Parking Restrictions	Two Lanes Open	One Lane Open	
12th Street Intersection	Electrical and sidewalk	X	X	X		
12th to 11th	Electrical	X	X			Hennepin will be closed
11th Street Intersection	Concrete paving	X			X	
11th to 10th	Curb and pavement, electrical					Hennepin will be closed
10th Street Intersection	Pavement	X			X	
10th to 9th	Sidewalk					Hennepin will be closed
9th Street Intersection	Electrical and pedestrian ramps	X		X		
9th to 8th	Sidewalk	X				Hennepin will be closed
8th Street Intersection	Pedestrian ramps	X			X	
8th to 7th	Sidewalk and bus stop	X				Hennepin will be closed
7th Street Intersection	Pedestrian ramp and pavement	X		X		
7th to 6th	Xcel cable work		X			Hennepin will be reduced to 1-lane in each direction
6th Street Intersection	Xcel cable work				X	
6th to 5th	Xcel cable work		X	X		Hennepin will be reduced to 1-lane in each direction
5th Street Intersection						
5th to 4th	Xcel cable work					
4th Street Intersection						
4th to 3rd	Sanitary sewer replacement					Hennepin will be closed
3rd Street Intersection	Sanitary sewer replacement			X		
3rd to Washington	Sanitary sewer replacement					Hennepin will be closed
Washington Ave Intersection	Sanitary sewer replacement					



13th Street to 10th Street

- Lane Closures will vary over the next couple weeks and are subject to change

Work zone (no vehicle access)

*Sidewalks will be maintained

Valet and loading zone

Daytime non-rush hour work zone

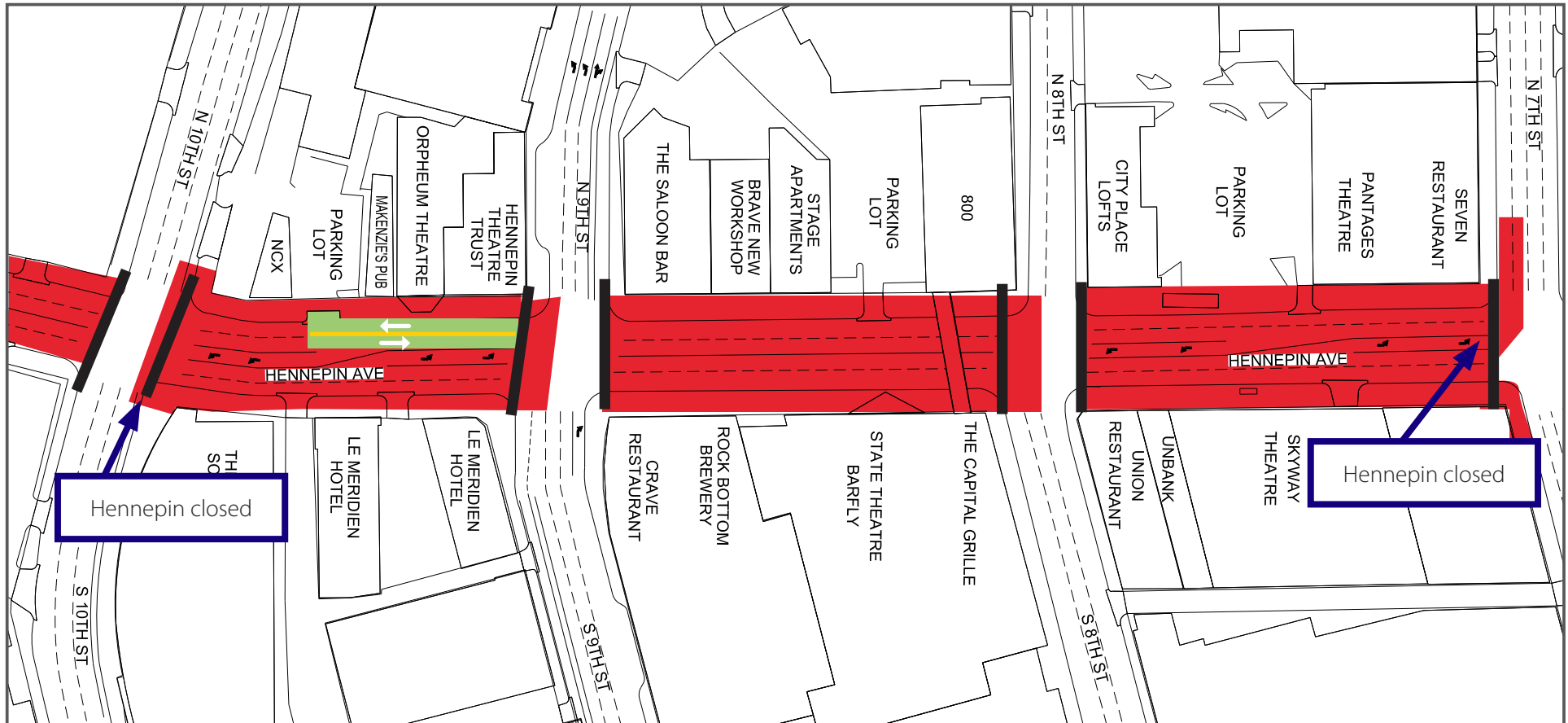
Work zone vehicle access maintained

Open travel lanes

Vehicle access - SB Hennepin only

Vehicle Access - NB Hennepin only

Full closure



10th Street to 7th Street

- Lane Closures will vary over the next couple weeks and are subject to change

Work zone (no vehicle access)
*Sidewalks will be maintained

Valet and loading zone

Daytime non-rush hour work zone

Work zone vehicle access maintained

Open travel lanes

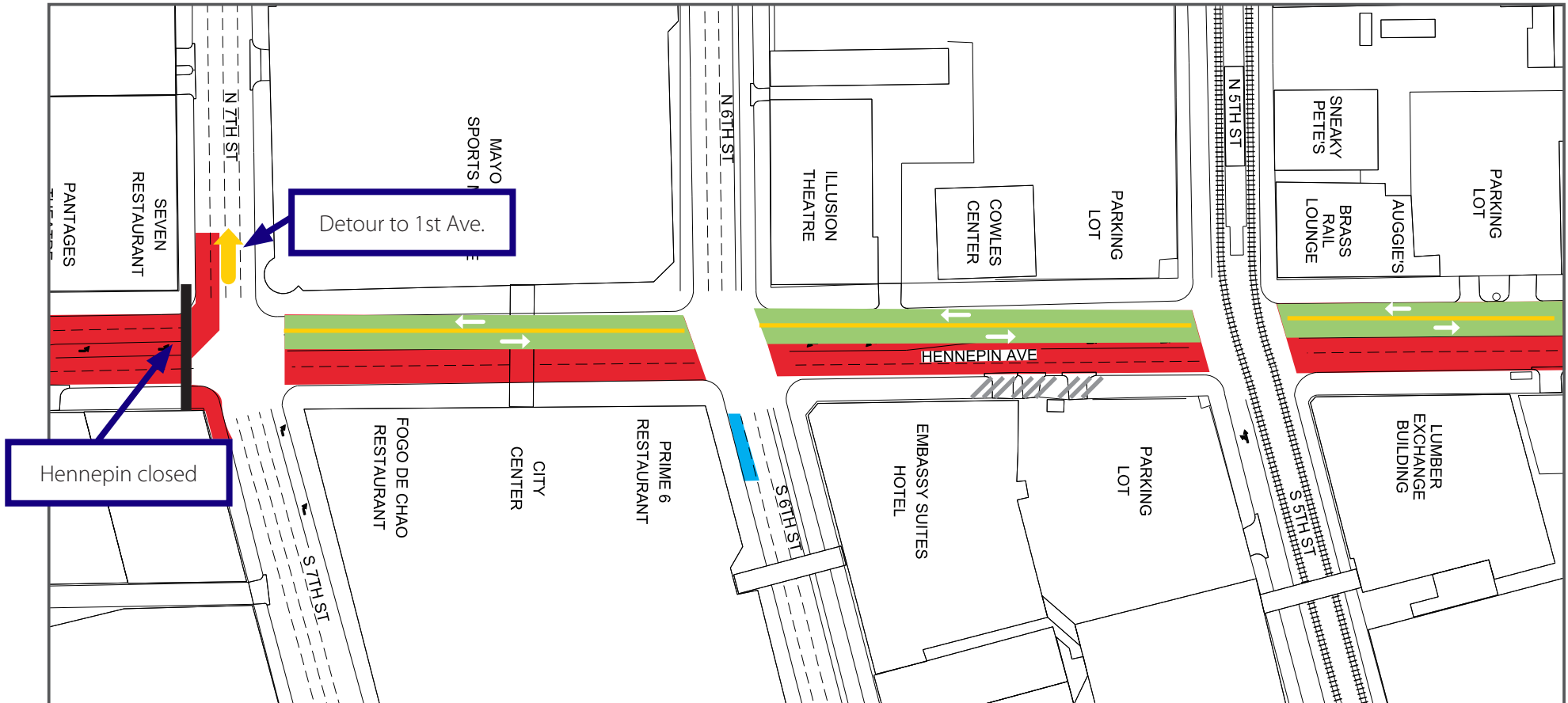
Vehicle access - SB Hennepin only

Vehicle Access - NB Hennepin only

HENNEPIN AVENUE


— Reconstruction Project —

Construction Update
Volume 45: August 16 – August 22, 2020

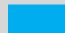



7th Street to 5th Street


- Lane Closures will vary over the next couple weeks and are subject to change


 Work zone (no vehicle access)


*Sidewalks will be maintained


 Valet and loading zone

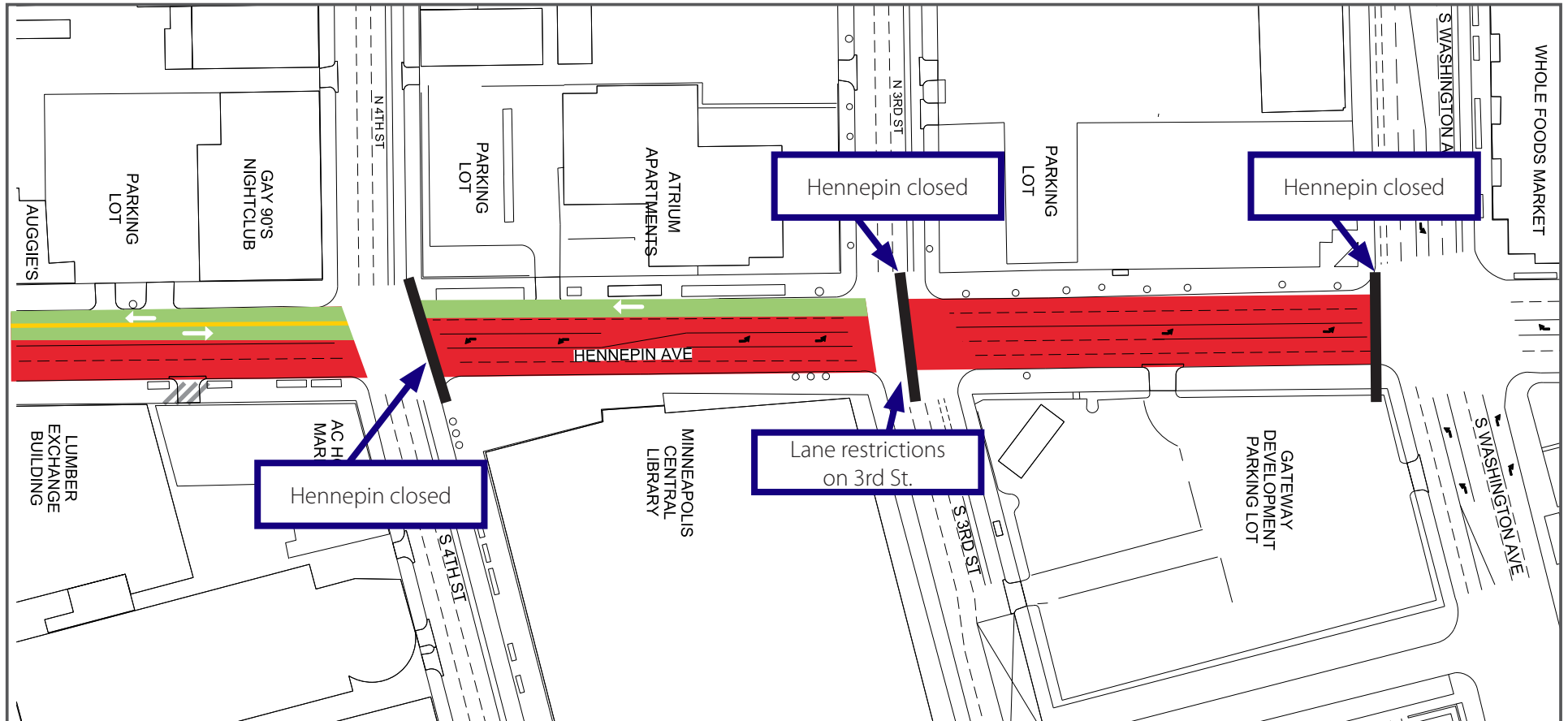
 Daytime non-rush hour work zone

 Work zone vehicle access maintained

 Open travel lanes

 Vehicle access - SB Hennepin only

 Vehicle Access - NB Hennepin only



4th Street to Washington Avenue

- Lane Closures will vary over the next couple weeks and are subject to change

Work zone (no vehicle access)
*Sidewalks will be maintained

Valet and loading zone

Daytime non-rush hour work zone

Work zone vehicle access maintained

Open travel lanes

Vehicle access - SB Hennepin only

Vehicle Access - NB Hennepin only