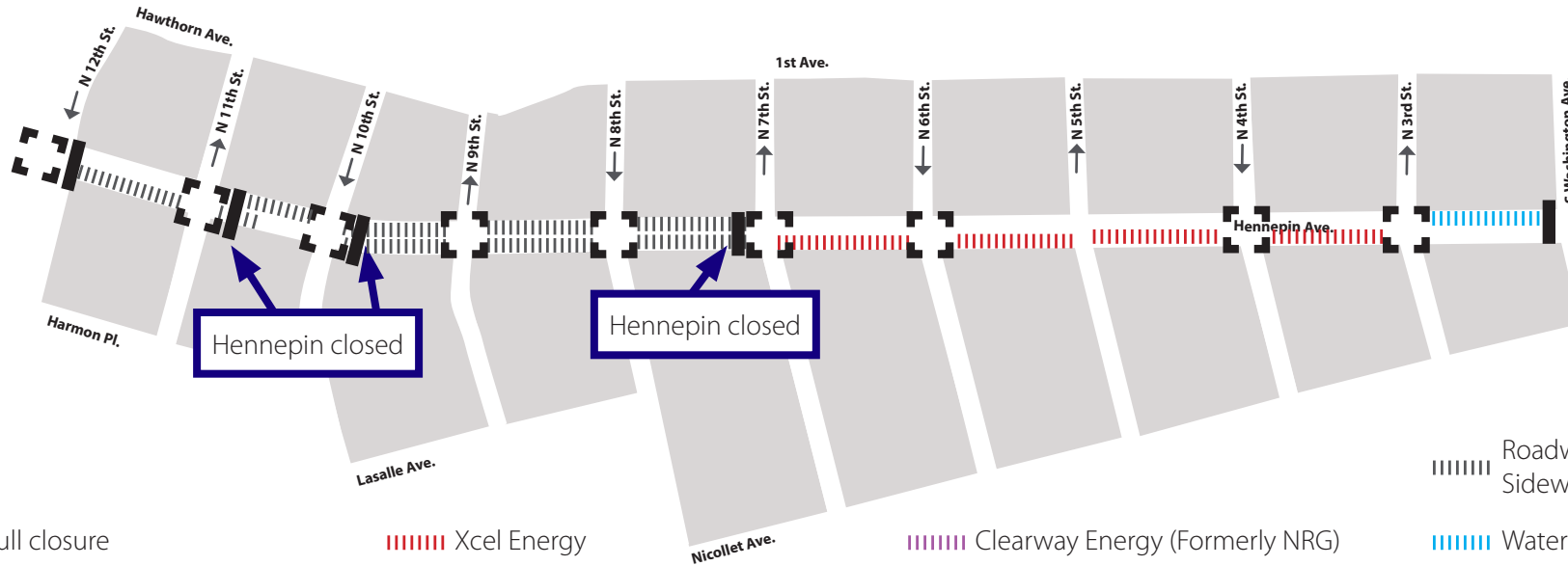


HENNEPIN AVENUE

— Reconstruction Project —

Construction Update

Volume 36: June 14 – June 20, 2020



Full closure

Xcel Energy

Clearway Energy (Formerly NRG)

Roadway & Sidewalk work

Partial intersection reduction

CenterPoint gas

Telecommunications

Water

City sewer



WHAT'S HAPPENING

- Utility construction will continue from 7th Street to Washington. This work will continue throughout 2020.
- Utility construction will consist of both Public and Private utility improvements, upgrades, expansion, relocations and replacements.
- Xcel Energy will continue work between 6th and Washington.
- Roadwork will continue until Fall 2020 and full-closure of Hennepin between 7th and 12th Street. Local access only from the South.



WHAT TO EXPECT

- Public and private utility work requiring the use of heavy equipment that will increase noise, vibration, and dust in work areas.
- Vehicle traffic congestion accompanying lane restrictions on Hennepin Ave. between 13th St and Washington Ave. Traffic will be reduced to one lane in each direction for the duration of utility construction. Lane restrictions will vary by block based on construction activity.
- Pedestrian detours as needed to facilitate construction needs. Greater impacts can be expected at intersections where work is occurring.
- Business access will remain open during the construction activity.
- Changes to Metro Transit. All Buses are detoured to Nicollet Mall. Visit Metro Transit website for specific route information.
- No left turns on or off Hennepin Ave. in certain locations.
- Cross streets will be reduced to one lane at times.

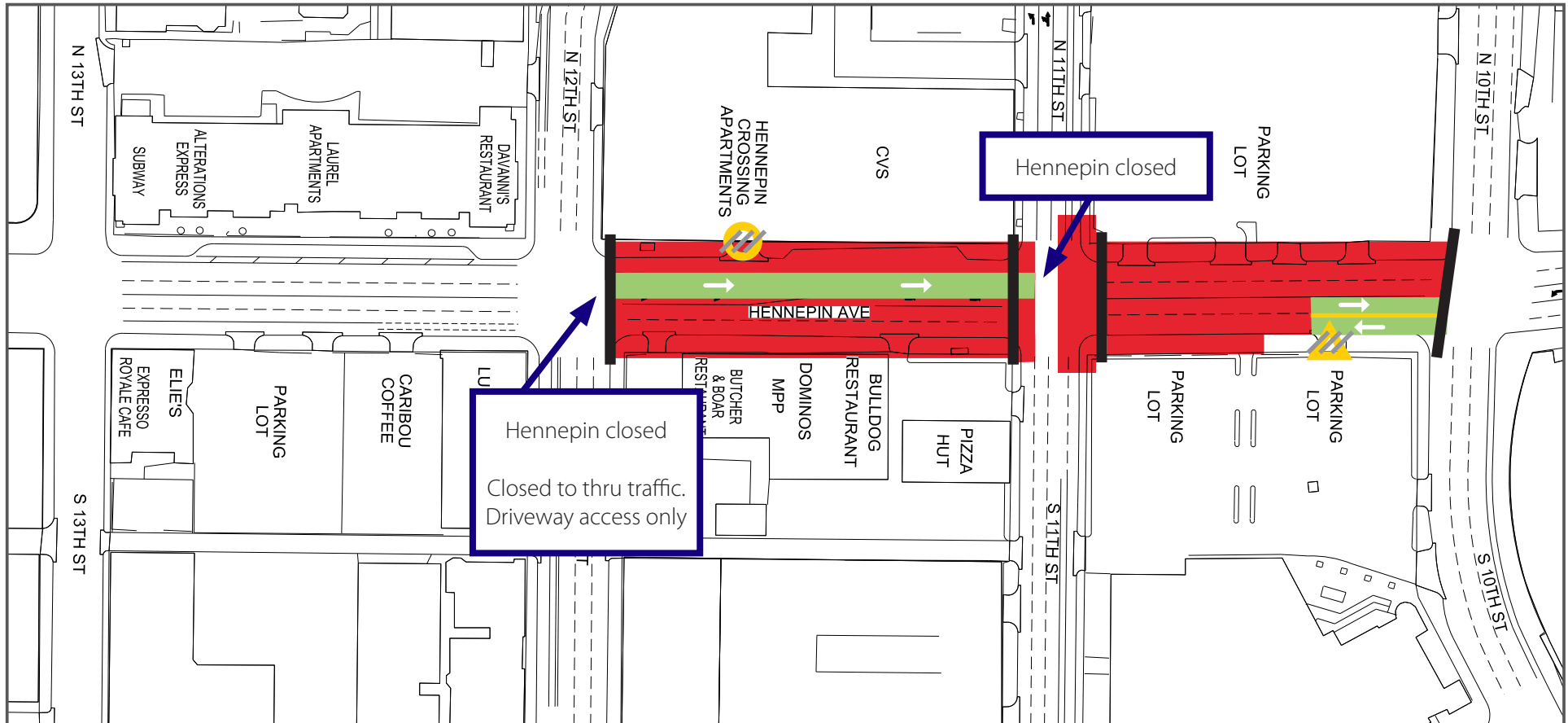


STAY CONNECTED

- Visit the project website: www.hennepindowntown.com
- Sign up for project updates on the project website.
- Contact the project hotline with questions, comments or concerns: **612-255-4049** or email HennepinCM@minneapolismn.gov



Block	Project Related Work	Anticipated Road/Pedestrian Restrictions				
		Temporary Ped Ramps	Parking Restrictions	Two Lanes Open	One Lane Open	Notes
12th Street Intersection						
12th to 11th	Curb and pavement	X	X		X	Hennepin will be reduced to 1-lane. Local access only.
11th Street Intersection	Storm sewer work			X		
11th to 10th	Curb and pavement	X			X	Hennepin will be closed.
10th Street Intersection				X		
10th to 9th	Curb and pavement					Hennepin will be closed
9th Street Intersection	Curb and pavement, storm sewer work	X		X		
9th to 8th	Curb and pavement	X	X	X		Hennepin will be reduced to 1-lane. Local access only.
8th Street Intersection	Curb and pavement	X			X	
8th to 7th	Curb and pavement	X	X	X		Hennepin will be reduced to 1-lane. Local access only.
7th Street Intersection	Curb			X		
7th to 6th	Xcel Energy installing new ducts and manholes		X			Hennepin will be reduced to 1-lane in each direction
6th Street Intersection	Xcel Energy installing new ducts and manholes			X		
6th to 5th	Xcel manhole work		X	X		Hennepin will be reduced to 1-lane in each direction
5th Street Intersection						
5th to 4th	Xcel Energy installing new ducts and manholes		X	X		Hennepin will be reduced to 1-lane in each direction
4th Street Intersection	Xcel Energy installing new ducts and manholes			X		4th will be reduced to 2-lanes
4th to 3rd	Xcel Energy installing new ducts and manholes		X	X		Hennepin will be closed
3rd Street Intersection	Xcel Energy installing new ducts and manholes & developments installing services			X		
3rd to Washington	Water main replacement				X	Hennepin will be reduced to 1-lane NB
Washington Ave Intersection	Water main replacement			X		Washington EB will be restricted



13th Street to 10th Street

- Lane Closures will vary over the next couple weeks and are subject to change

Work zone (no vehicle access)

*Sidewalks will be maintained

Valet and loading zone

Daytime non-rush hour work zone

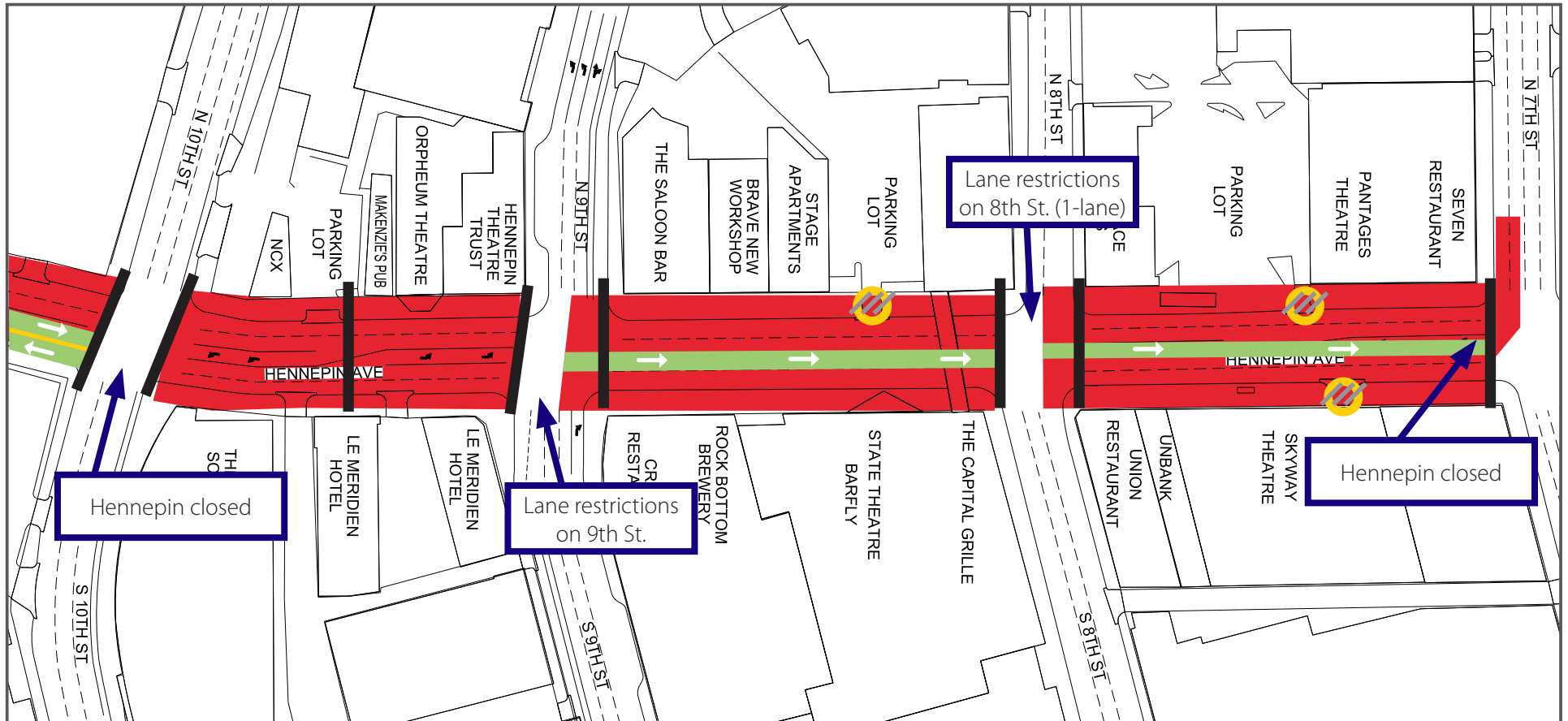
Work zone vehicle access maintained

Open travel lanes

Vehicle access - SB Hennepin only

Vehicle Access - NB Hennepin only

Full closure



10th Street to 7th Street

- Lane Closures will vary over the next couple weeks and are subject to change

Work zone (no vehicle access)
*Sidewalks will be maintained

Valet and loading zone

Daytime non-rush hour work zone

Work zone vehicle access maintained

Open travel lanes

Vehicle access - SB Hennepin only

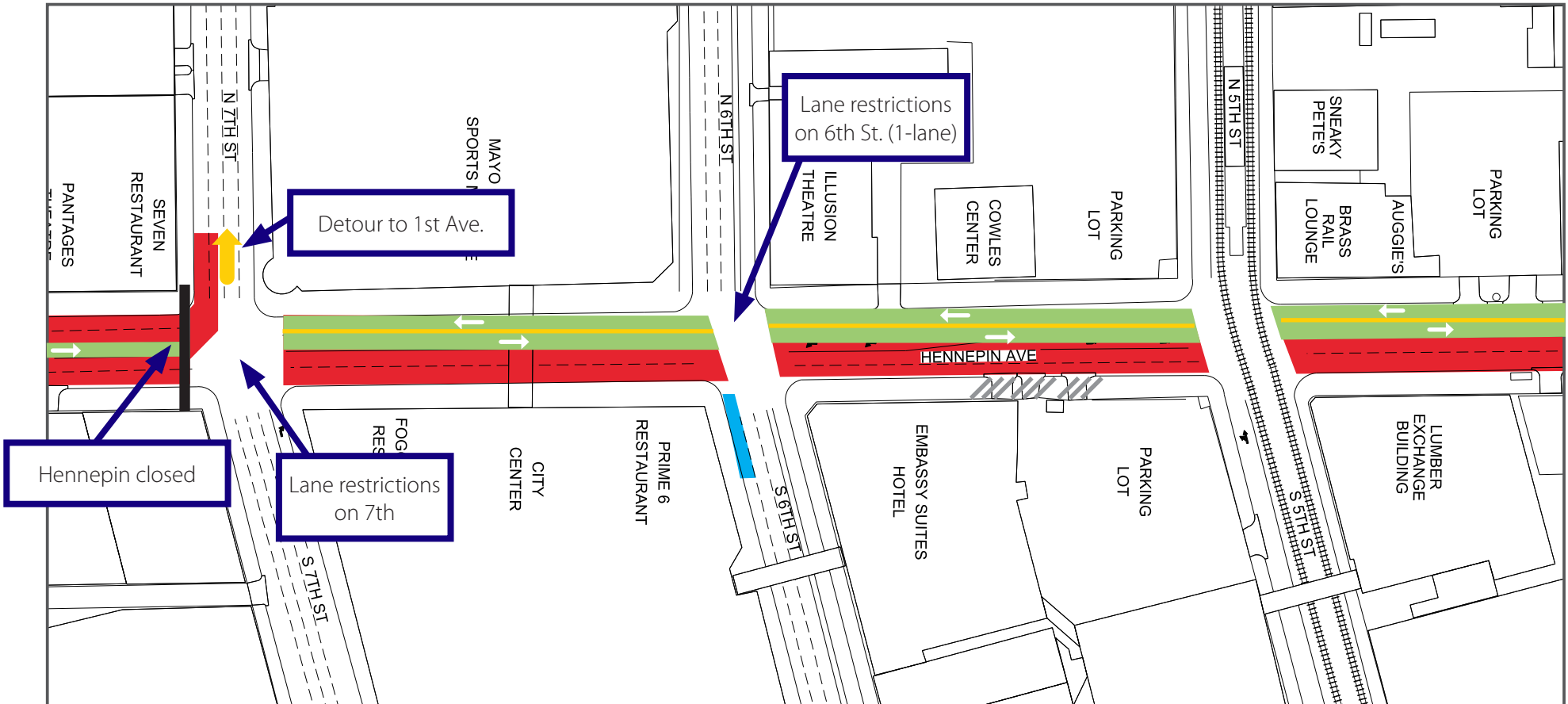
Vehicle Access - NB Hennepin only

HENNEPIN AVENUE

— Reconstruction Project —

Construction Update

Volume 36: June 14 – June 20, 2020



7th Street to 5th Street

- Lane Closures will vary over the next couple weeks and are subject to change

Work zone (no vehicle access)

*Sidewalks will be maintained

Valet and loading zone

Daytime non-rush hour work zone

Work zone vehicle access maintained

Open travel lanes

Vehicle access - SB Hennepin only

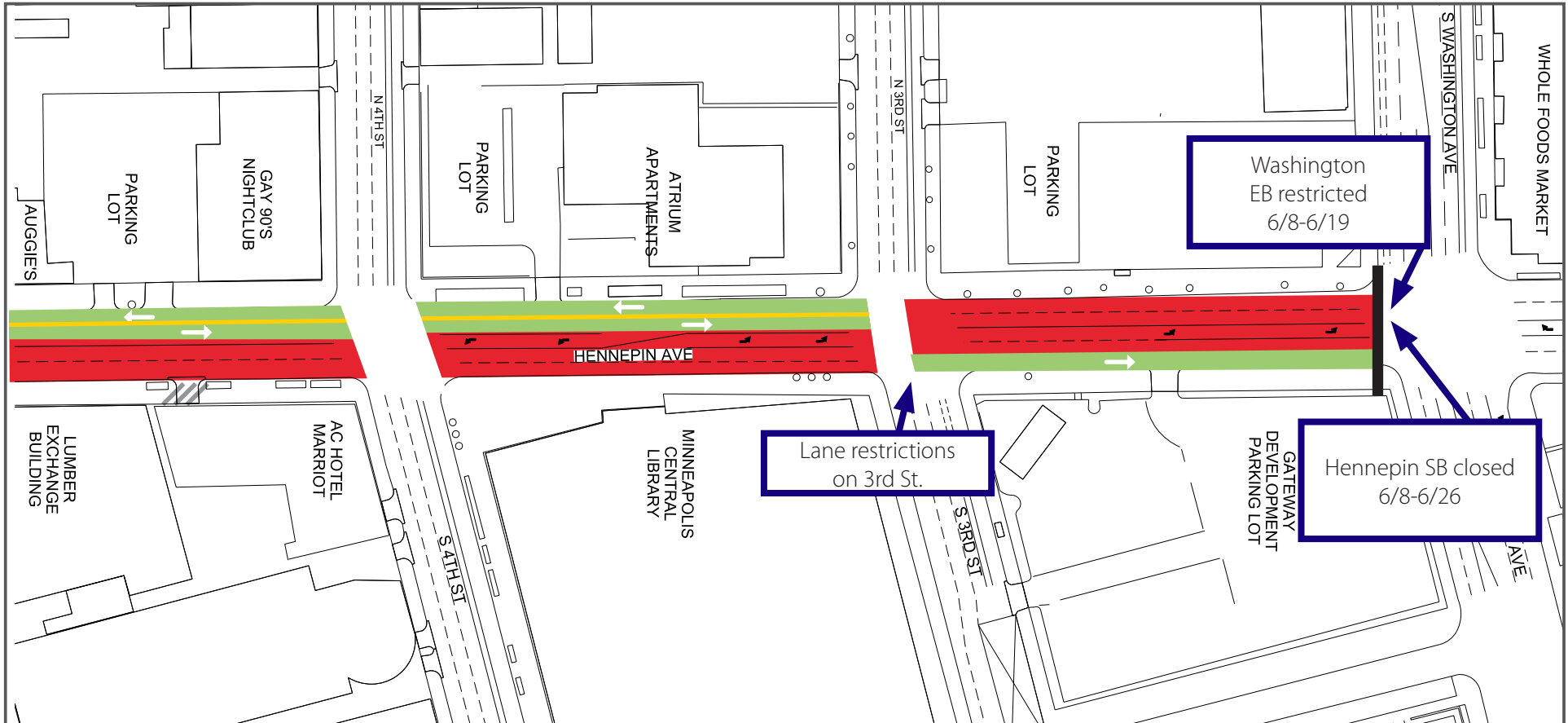
Vehicle Access - NB Hennepin only

HENNEPIN AVENUE

— Reconstruction Project —

Construction Update

Volume 36: June 14 – June 20, 2020



4th Street to Washington Avenue

- Lane Closures will vary over the next couple weeks and are subject to change

Work zone (no vehicle access)
*Sidewalks will be maintained

Valet and loading zone

Daytime non-rush hour work zone

Work zone vehicle access maintained

Open travel lanes

Vehicle access - SB Hennepin only

Vehicle Access - NB Hennepin only