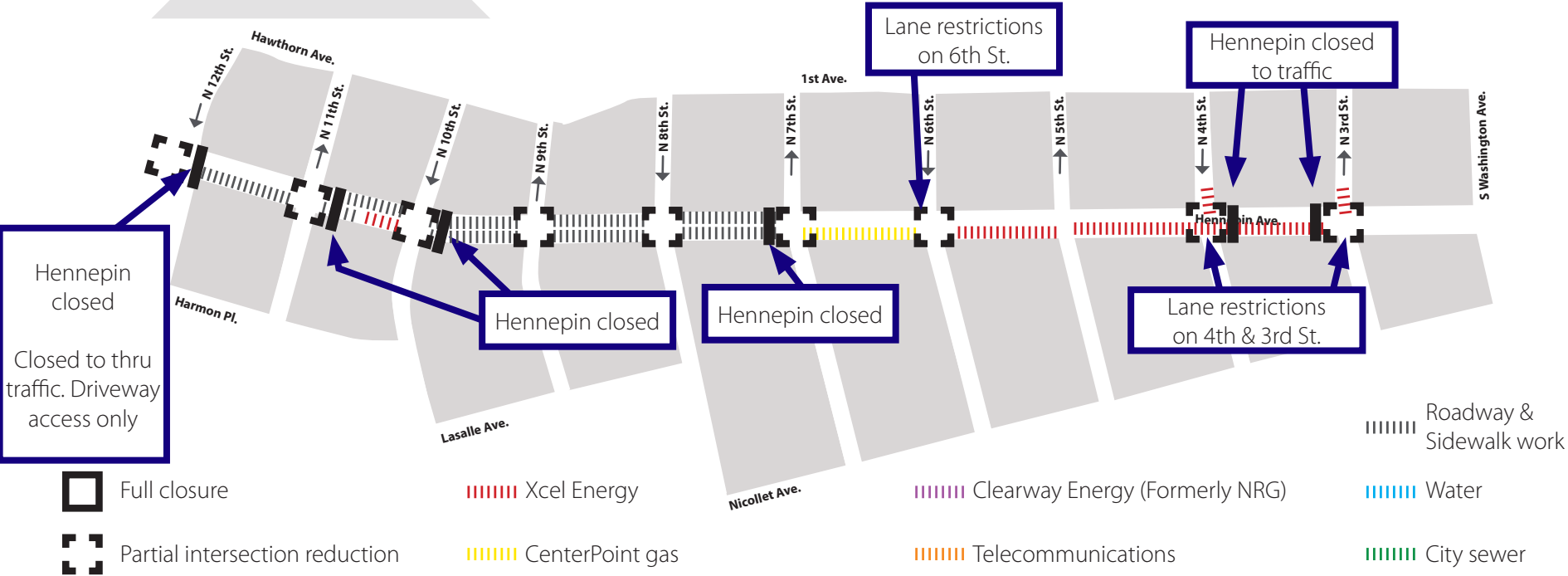


HENNEPIN AVENUE

— Reconstruction Project —

Construction Update
Volume 32: May 17 – May 23, 2020



WHAT'S HAPPENING

- Utility construction will continue from 5th Street to Washington. This work will continue throughout 2020.
- Utility construction will continue from 7th to 5th.
- Utility construction will consist of both Public and Private utility improvements, upgrades, expansion, relocations and replacements.
- Xcel Energy will continue work between 6th and Washington.
- CenterPoint gas work will begin between 7th and 5th Street.
- Roadwork will continue until Fall 2020 and full-closure of Hennepin between 7th and 12th Street. Local access only from the South.



WHAT TO EXPECT

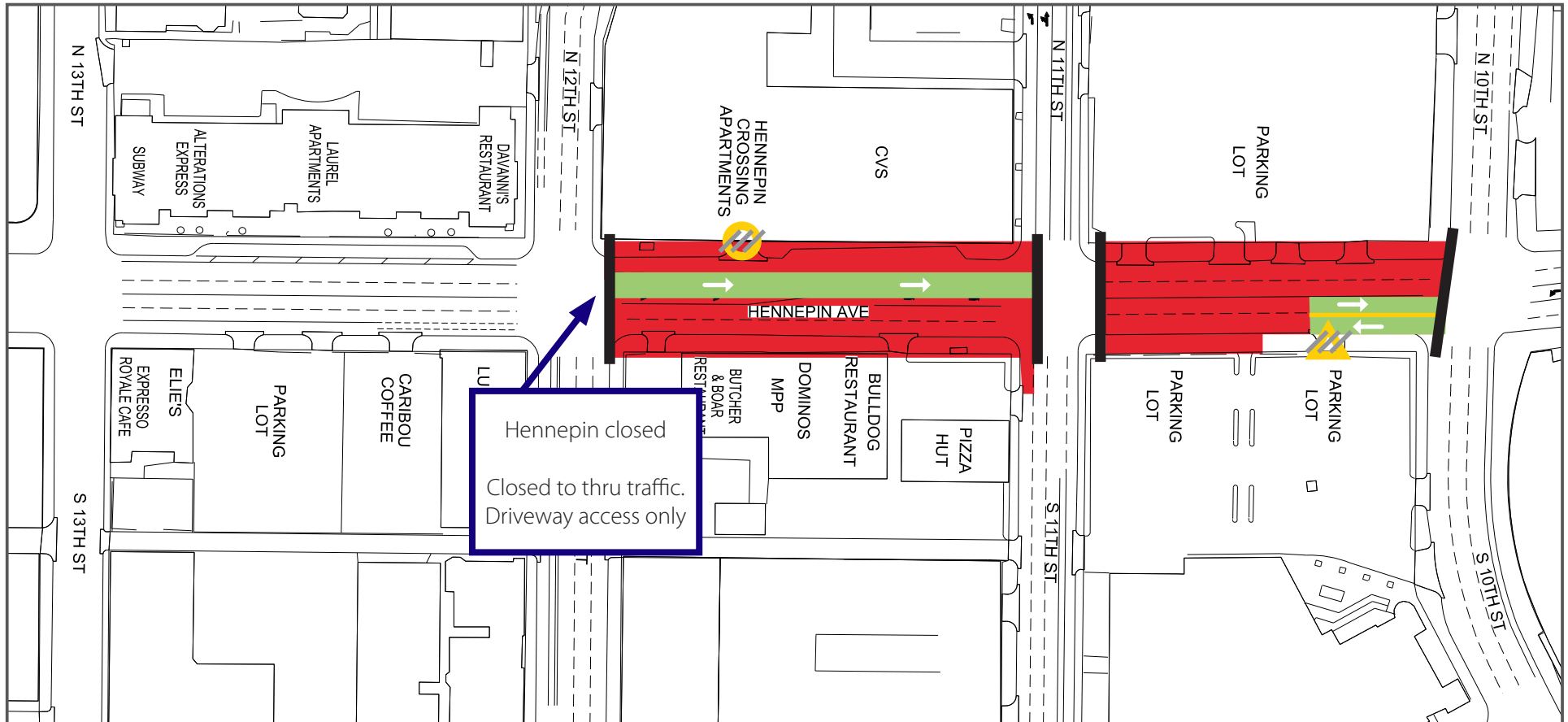
- Public and private utility work requiring the use of heavy equipment that will increase noise, vibration, and dust in work areas.
- Vehicle traffic congestion accompanying lane restrictions on Hennepin Ave. between 13th St and Washington Ave. Traffic will be reduced to one lane in each direction for the duration of utility construction. Lane restrictions will vary by block based on construction activity.
- Pedestrian detours as needed to facilitate construction needs. Greater impacts can be expected at intersections where work is occurring.
- Business access will remain open during the construction activity.
- Changes to Metro Transit. All Buses are detoured to Nicollet Mall. Visit Metro Transit website for specific route information.
- No left turns on or off Hennepin Ave. in certain locations.
- Cross streets will be reduced to one lane at times.



STAY CONNECTED

- Visit the project website: www.hennepindowntown.com
- Sign up for project updates on the project website.
- Contact the project hotline with questions, comments or concerns: **612-255-4049** or email HennepinCM@minneapolismn.gov

Block	Project Related Work	Anticipated Road/Pedestrian Restrictions				
		Temporary Ped Ramps	Parking Restrictions	Two Lanes Open	One Lane Open	Notes
12th Street Intersection						
12th to 11th	Sidewalk work and storm sewer	X	X		X	Hennepin will be reduced to 1-lane. Local access only.
11th Street Intersection						
11th to 10th	Sidewalk work and storm sewer work	X			X	Hennepin will be reduced to 1-lane. Local access only.
10th Street Intersection	Storm sewer work			X		
10th to 9th	Sidewalk work and electrical work					Hennepin will be closed
9th Street Intersection						
9th to 8th	Sidewalk work and electrical work	X	X	X		Hennepin will be reduced to 1-lane. Local access only.
8th Street Intersection	Storm sewer work and electrical work					
8th to 7th	Electrical lighting and sidewalk work	X	X	X		Hennepin will be reduced to 1-lane. Local access only.
7th Street Intersection						
7th to 6th	CenterPoint gas work		X			Hennepin will be reduced to 1-lane in each direction
6th Street Intersection	CenterPoint gas work			X		
6th to 5th	CenterPoint gas work and Xcel manhole work		X	X		Hennepin will be reduced to 1-lane in each direction
5th Street Intersection						
5th to 4th	Xcel Energy installing new ducts and manholes		X	X		Hennepin will be reduced to 1-lane in each direction
4th Street Intersection	Xcel Energy installing new ducts and manholes			X		4th will be reduced to 2-lanes
4th to 3rd	Xcel Energy installing new ducts and manholes		X	X		Hennepin will be closed
3rd Street Intersection	Xcel Energy installing new ducts and manholes & developments installing services			X		
3rd to Washington	Developments working in area					
Washington Ave Intersection						



13th Street to 10th Street

- Lane Closures will vary over the next couple weeks and are subject to change

Work zone (no vehicle access)
*Sidewalks will be maintained

Valet and loading zone

Daytime non-rush hour work zone

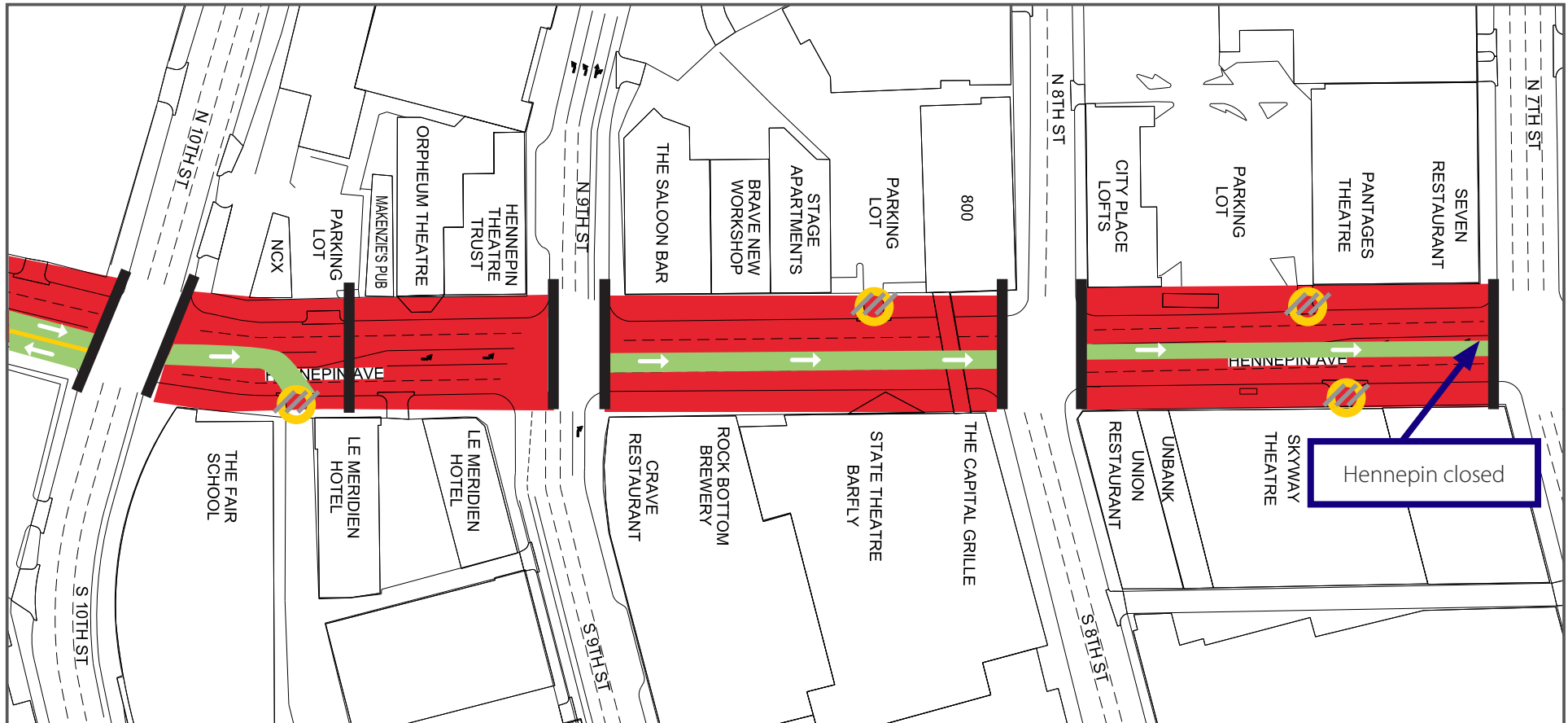
Work zone vehicle access maintained

Open travel lanes

Vehicle access - SB Hennepin only

Vehicle Access - NB Hennepin only

Full closure



10th Street to 7th Street

- Lane Closures will vary over the next couple weeks and are subject to change

Work zone (no vehicle access)
*Sidewalks will be maintained

Valet and loading zone

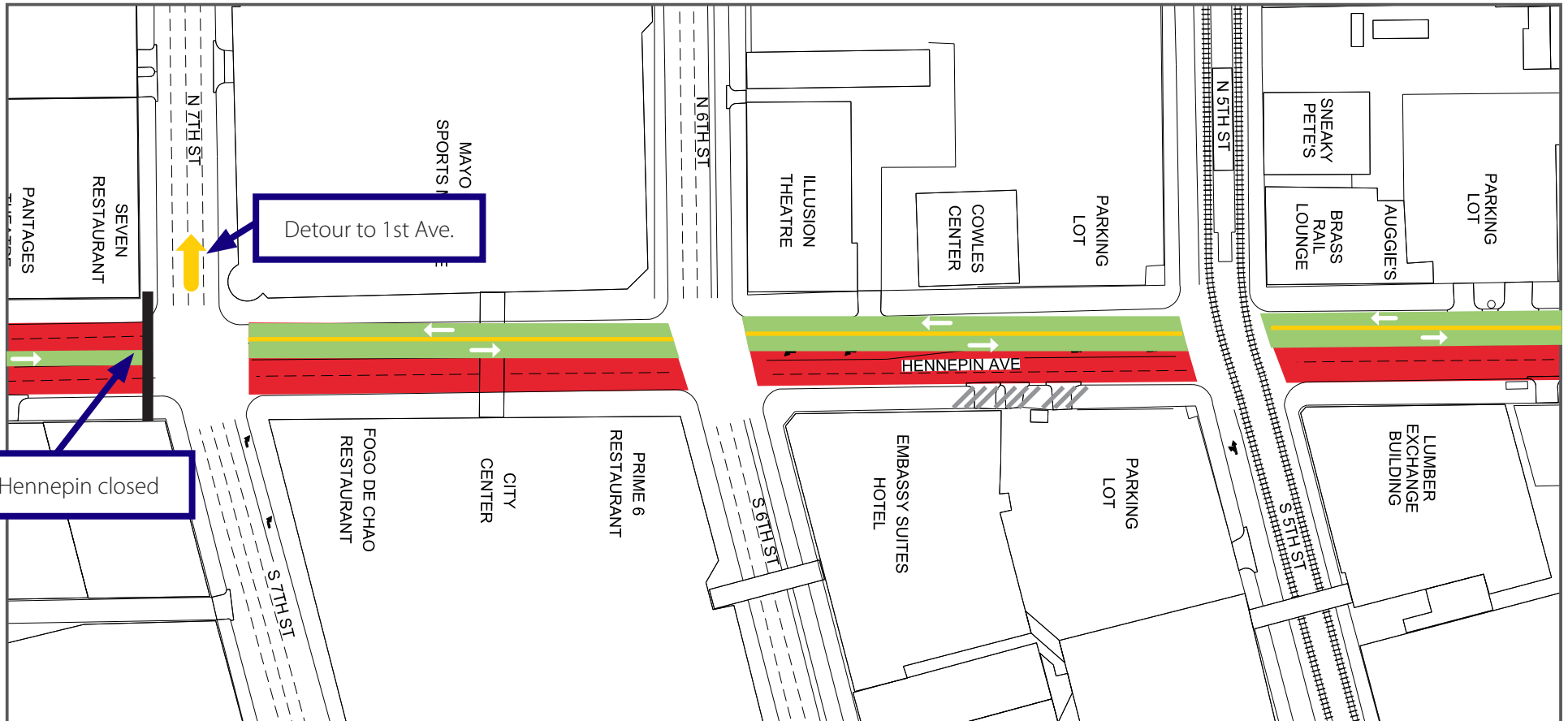
Daytime non-rush hour work zone

Work zone vehicle access maintained

Open travel lanes

Vehicle access - SB Hennepin only

Vehicle Access - NB Hennepin only



7th Street to 5th Street

- Lane Closures will vary over the next couple weeks and are subject to change

Work zone (no vehicle access)
*Sidewalks will be maintained

Valet and loading zone

Daytime non-rush hour work zone

Work zone vehicle access maintained

Open travel lanes

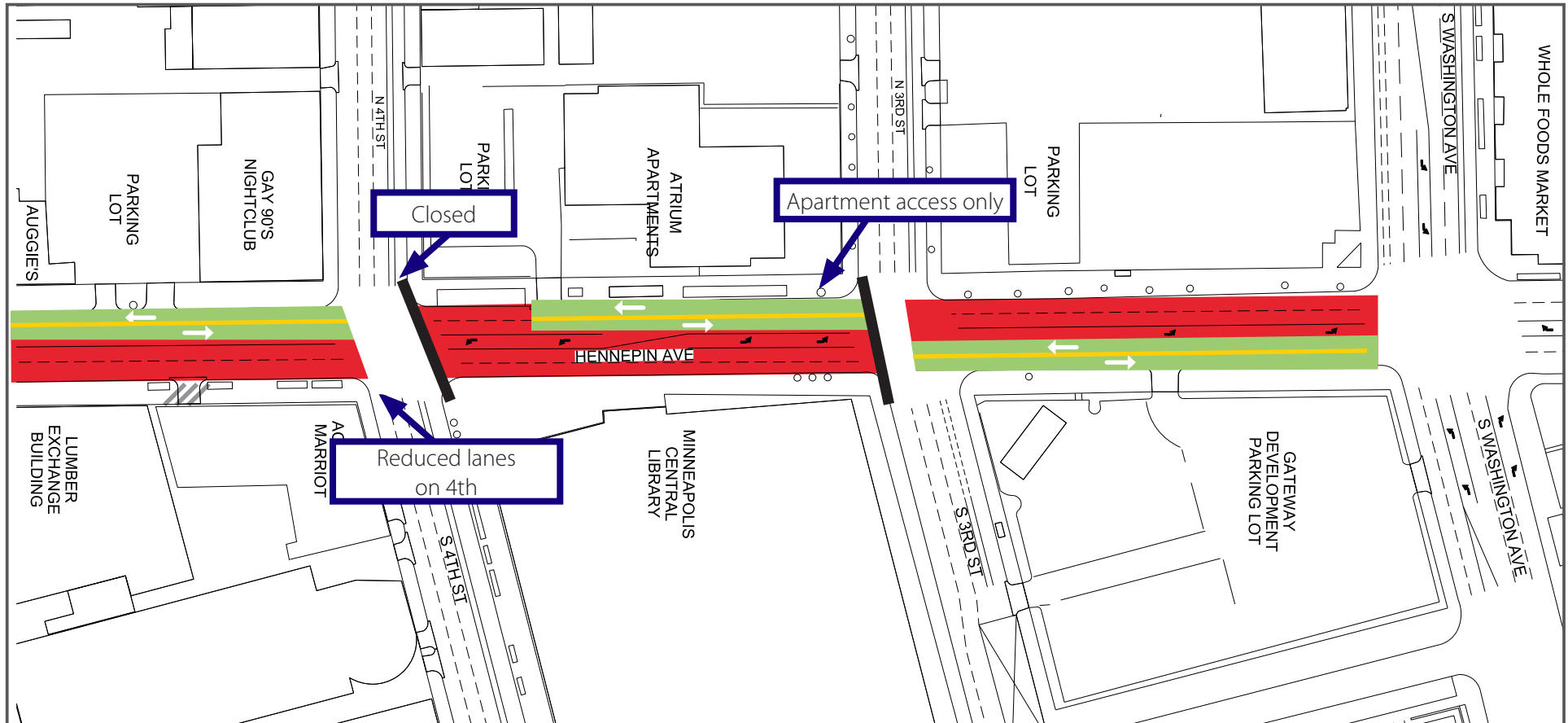
Vehicle access - SB Hennepin only

Vehicle Access - NB Hennepin only

HENNEPIN AVENUE


— Reconstruction Project —

Construction Update
Volume 32: May 17 – May 23, 2020




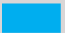
4th Street to Washington Avenue


- Lane Closures will vary over the next couple weeks and are subject to change


 Work zone (no vehicle access)
*Sidewalks will be maintained


 Work zone vehicle access maintained

 Vehicle Access - NB Hennepin only

 Valet and loading zone

 Open travel lanes

 Daytime non-rush hour work zone

 Vehicle access - SB Hennepin only