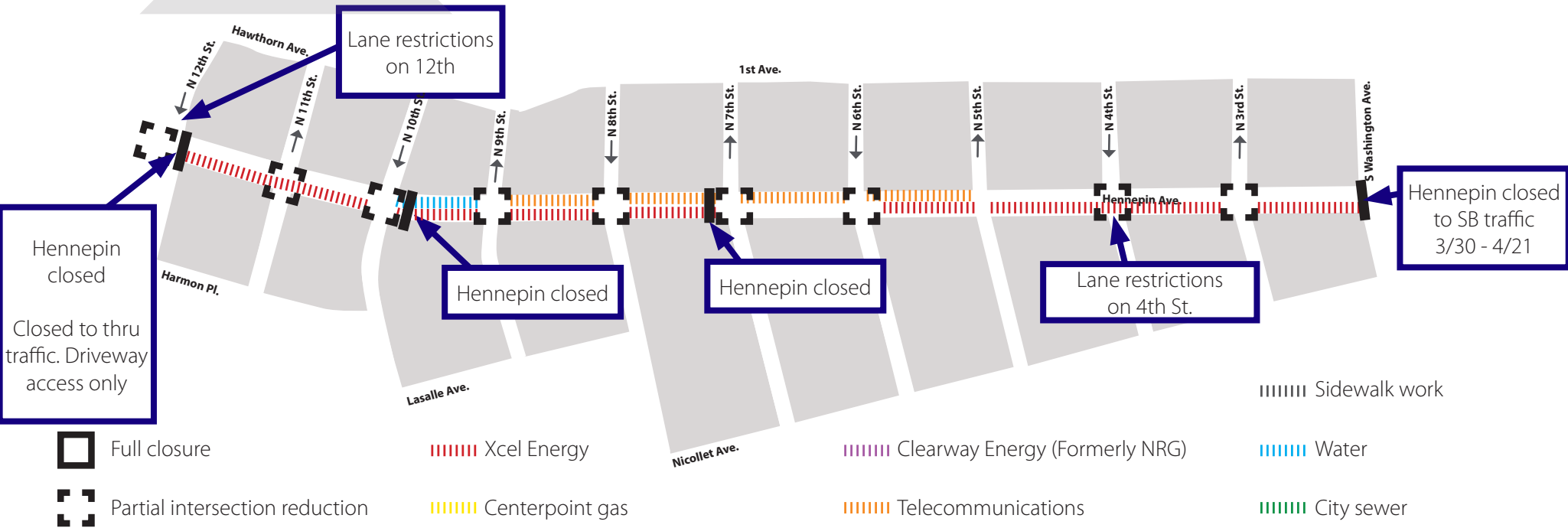


# HENNEPIN AVENUE

— Reconstruction Project —

**Construction Update**  
Volume 27: April 12 – April 18, 2020



## WHAT'S HAPPENING

- Utility Construction will continue from 12th to 7th. This work will continue throughout spring 2020.
- Utility construction will continue from 5th Street to Washington. This work will continue throughout 2020.
- Utility construction will continue from 7th to 5th.
- Utility construction will consist of both Public and Private utility improvements, upgrades, expansion, relocations and replacements.
- Xcel Energy will continue work between 6th and Washington.
- Xcel will continue work at 10th Street and progress south.
- Xcel will continue with cable work south of 7th Street.
- Telecom work will begin between 7th and 9th Street.
- Roadwork will begin 3/31 and full-closure of Hennepin between 7th and 12th Street. Local access only from the South.



## WHAT TO EXPECT

- Public and private utility work requiring the use of heavy equipment that will increase noise, vibration, and dust in work areas.
- Vehicle traffic congestion accompanying lane restrictions on Hennepin Ave. between 13th St and Washington Ave. Traffic will be reduced to one lane in each direction for the duration of utility construction. Lane restrictions will vary by block based on construction activity.
- Pedestrian detours as needed to facilitate construction needs. Greater impacts can be expected at intersections where work is occurring.
- Business access will remain open during the construction activity.
- Changes to Metro Transit. All Buses are detoured to Nicollet Mall. Visit Metro Transit website for specific route information.
- No left turns on or off Hennepin Ave. in certain locations.
- Cross streets will be reduced to one lane at times.



## STAY CONNECTED

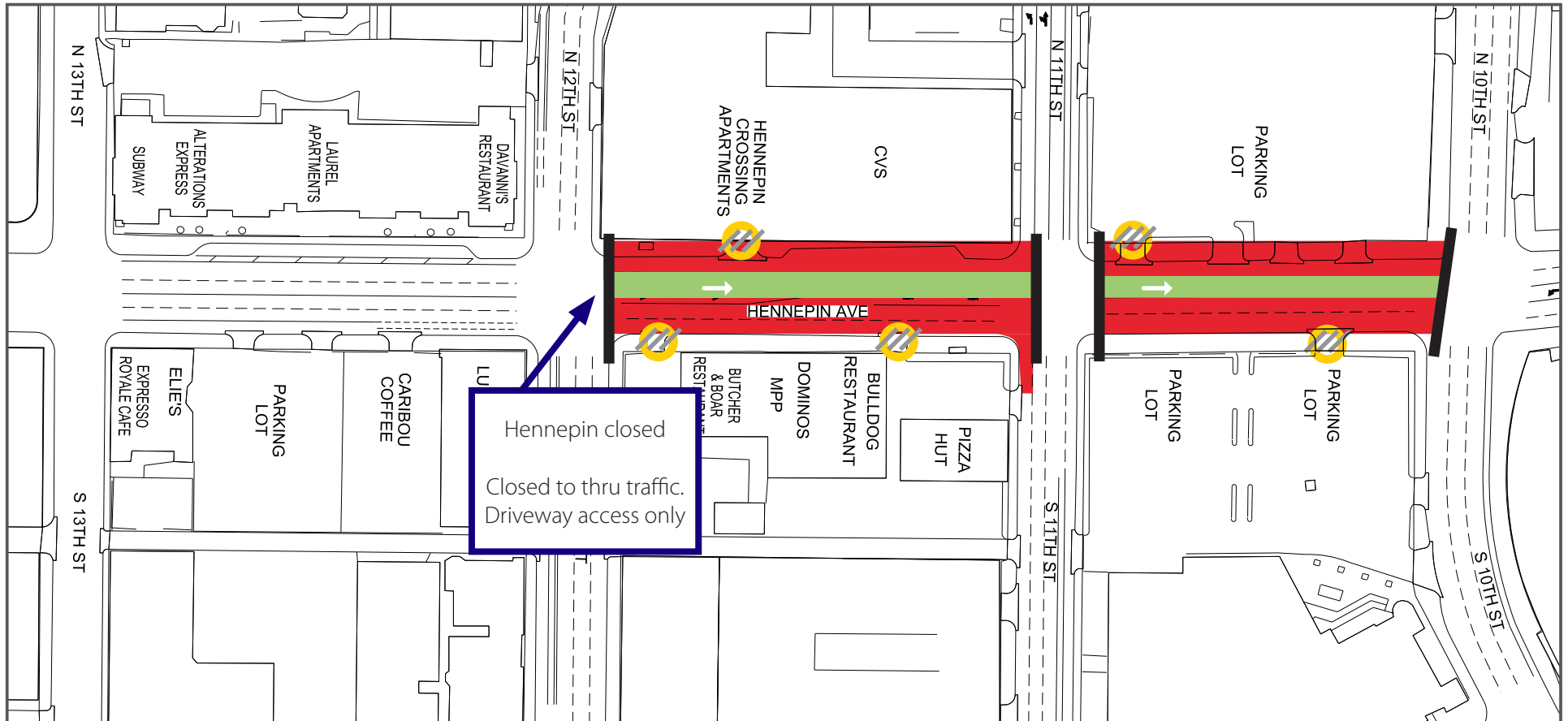
- Visit the project website: [www.hennepindowntown.com](http://www.hennepindowntown.com)
- Sign up for project updates on the project website.
- Contact the project hotline with questions, comments or concerns: **612-255-4049** or email [HennepinCM@minneapolismn.gov](mailto:HennepinCM@minneapolismn.gov)

Block	Project Related Work	Anticipated Road/Pedestrian Restrictions				
		Temporary Ped Ramps	Parking Restrictions	Two Lanes Open	One Lane Open	Notes
<b>12th Street Intersection</b>	Xcel Energy installing new ducts and manholes				X	12th will be reduced
<b>12th to 11th</b>	Xcel Energy installing new ducts and manholes	X	X	X		Hennepin will be reduced to 1-lane. Local access only.
<b>11th Street Intersection</b>	Xcel Energy installing new ducts and manholes			X		11th will be reduced
<b>11th to 10th</b>	Xcel Energy installing new ducts and manholes	X	X	X		Hennepin will be reduced to 1-lane. Local access only.
<b>10th Street Intersection</b>						
<b>10th to 9th</b>	Hydrant and storm sewer work					Hennepin will be closed
<b>9th Street Intersection</b>	Telecom installing new ducts	X		X		
<b>9th to 8th</b>	Xcel Energy installing new ducts and manholes	X	X	X		Hennepin will be reduced to 1-lane. Local access only.
<b>8th Street Intersection</b>	Telecoms installing new manhole	X			X	
<b>8th to 7th</b>	Hydrant and storm sewer work	X	X	X		Hennepin will be reduced to 1-lane. Local access only.
<b>7th Street Intersection</b>	Telecoms installing new manhole and conduits	X		X		
<b>7th to 6th</b>	Telecoms installing new manhole and conduits					Hennepin will be reduced to 1-lane in each direction
<b>6th Street Intersection</b>	Telecoms installing new manhole and conduits	X		X		
<b>6th to 5th</b>			X	X		Hennepin will be reduced to 1-lane in each direction
<b>5th Street Intersection</b>						
<b>5th to 4th</b>	Xcel Energy installing new ducts and manholes		X	X		Hennepin will be reduced to 1-lane in each direction
<b>4th Street Intersection</b>	Xcel Energy installing new ducts and manholes			X		4th will be reduced to 2-lanes
<b>4th to 3rd</b>	Xcel Energy installing new ducts and manholes		X	X		Hennepin will be reduced to 1-lane in each direction
<b>3rd Street Intersection</b>	Xcel Energy installing new ducts and manholes & developments installing services					
<b>3rd to Washington</b>	Developments working in area				X	Hennepin will be reduced to 1-lane NB only. Closed to SB traffic
<b>Washington Ave Intersection</b>						

# HENNEPIN AVENUE


— Reconstruction Project —

**Construction Update**  
Volume 27: April 12 – April 18, 2020




## 13th Street to 10th Street


- Lane Closures will vary over the next couple weeks and are subject to change


 Work zone (no vehicle access)  
\*Sidewalks will be maintained

 Valet and loading zone

 Daytime non-rush hour work zone

 Work zone vehicle access maintained

 Open travel lanes

 Vehicle access - SB Hennepin only

 Vehicle Access - NB Hennepin only

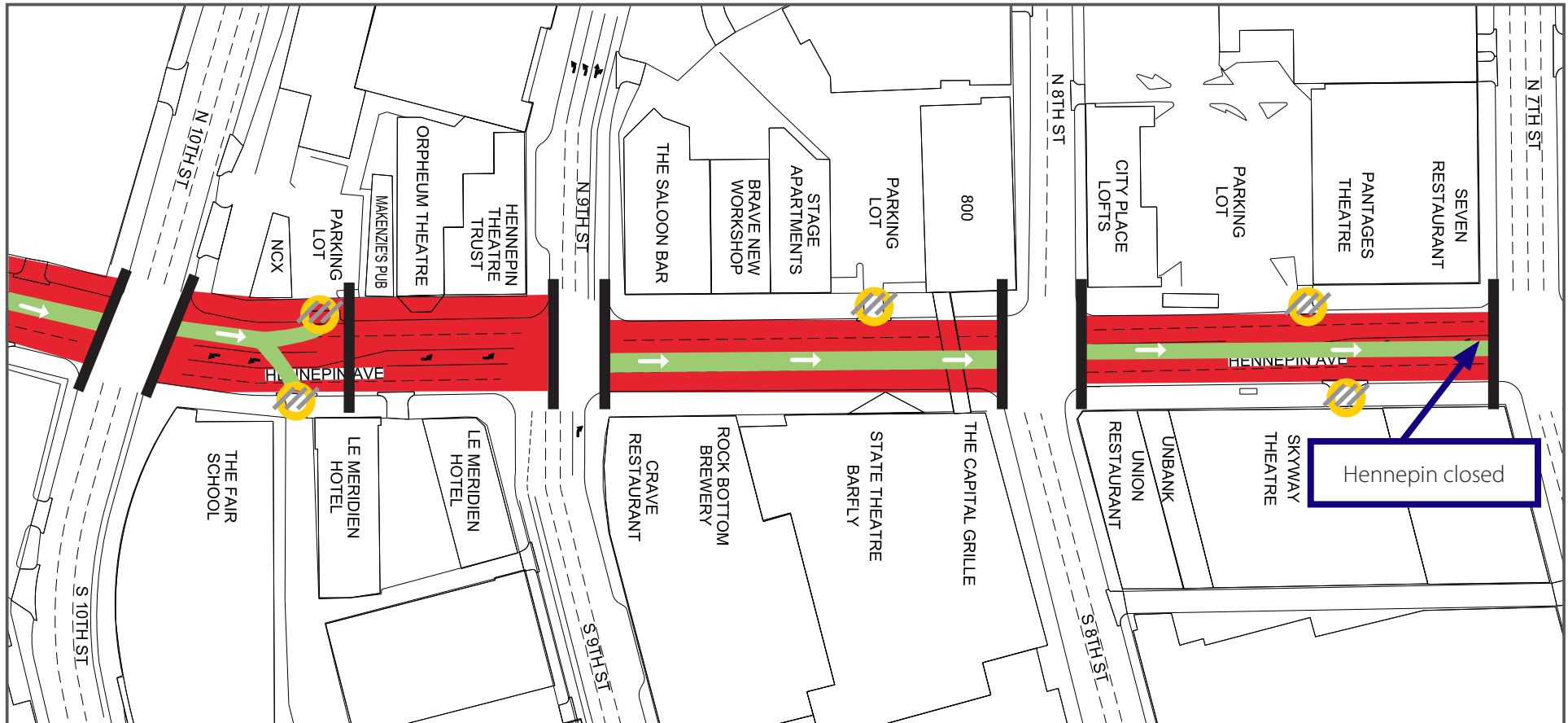
 Full closure

# HENNEPIN AVENUE

— Reconstruction Project —

## Construction Update

Volume 27: April 12 – April 18, 2020



### 10th Street to 7th Street

- Lane Closures will vary over the next couple weeks and are subject to change

Work zone (no vehicle access)  
\*Sidewalks will be maintained

Valet and loading zone

Daytime non-rush hour work zone

Work zone vehicle access maintained

Open travel lanes

Vehicle access - SB Hennepin only

Vehicle Access - NB Hennepin only

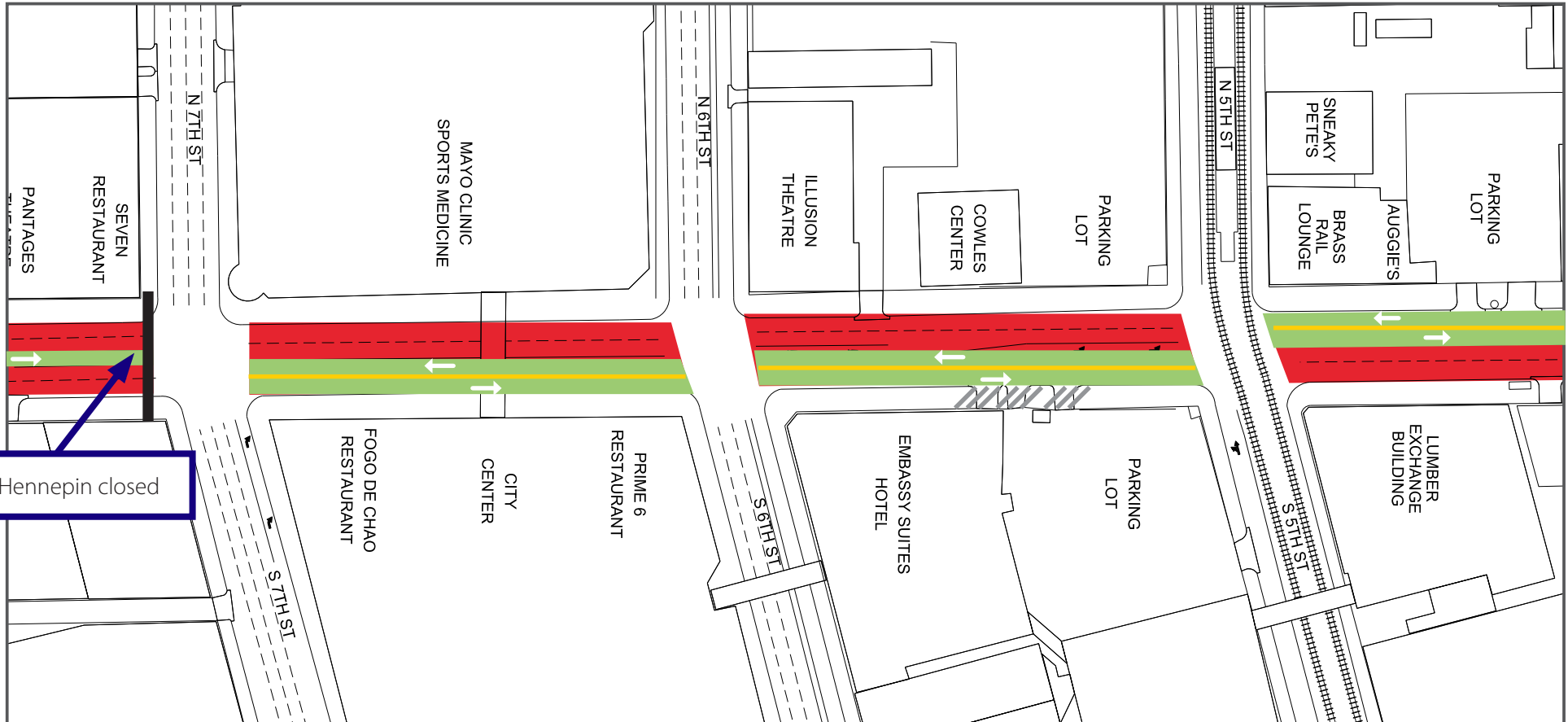
Hennepin closed

# HENNEPIN AVENUE

— Reconstruction Project —


## Construction Update

Volume 27: April 12 – April 18, 2020




### 7th Street to 5th Street


- Lane Closures will vary over the next couple weeks and are subject to change

 Work zone (no vehicle access)


\*Sidewalks will be maintained


 Valet and loading zone

 Daytime non-rush hour work zone

 Work zone vehicle access maintained

 Open travel lanes

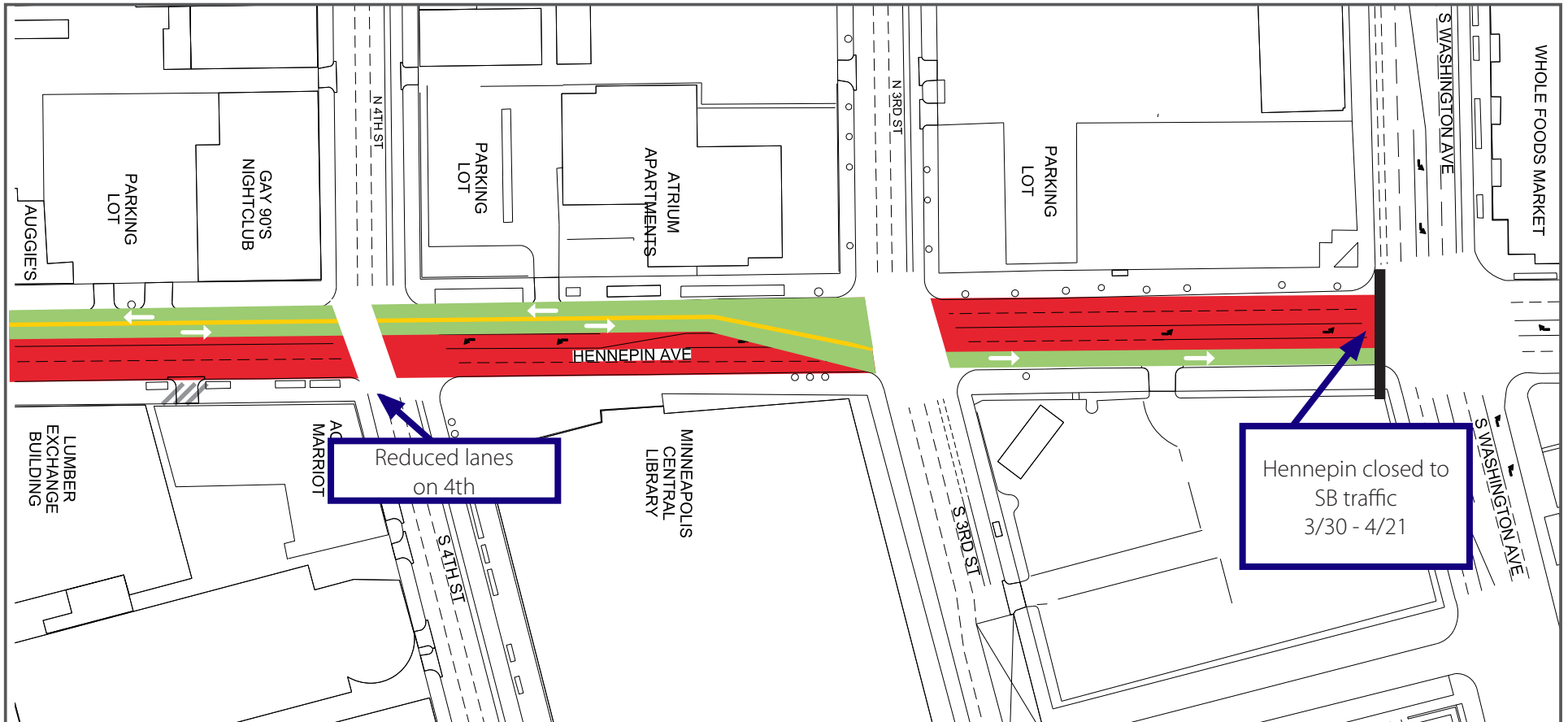
 Vehicle access - SB Hennepin only

 Vehicle Access - NB Hennepin only

# HENNEPIN AVENUE


— Reconstruction Project —

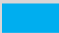
**Construction Update**  
Volume 27: April 12 – April 18, 2020



## 4th Street to Washington Avenue


- Lane Closures will vary over the next couple weeks and are subject to change


 Work zone (no vehicle access)  
\*Sidewalks will be maintained


 Valet and loading zone

 Daytime non-rush hour work zone

 Work zone vehicle access maintained

 Open travel lanes

 Vehicle access - SB Hennepin only

 Vehicle Access - NB Hennepin only