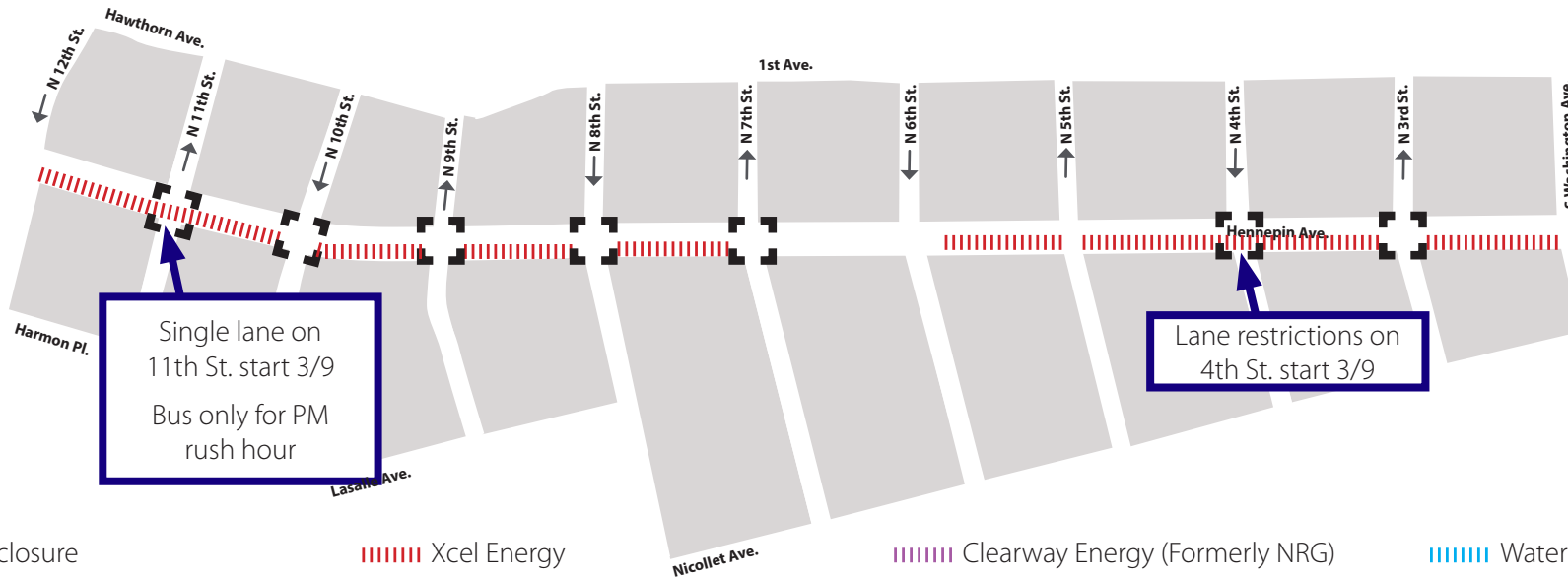



HENNEPIN AVENUE

— Reconstruction Project —

Construction Update

Volume 23: March 1 – March 14, 2020



-  Full closure
-  Xcel Energy
-  Clearway Energy (Formerly NRG)
-  Water
-  Partial intersection reduction
-  Centerpoint gas
-  Telecommunications
-  City sewer



WHAT'S HAPPENING

- Utility Construction will continue from 12th to 7th. This work will continue throughout spring 2020.
- Utility construction will continue from 5th Street to Washington. This work will continue throughout 2020.
- Utility construction will consist of both Public and Private utility improvements, upgrades, expansion, relocations and replacements.
- Xcel Energy will continue work between 6th and Washington.
- Xcel will continue work at 10th Street and progress south.
- Xcel will continue with cable work south of 7th Street.



WHAT TO EXPECT

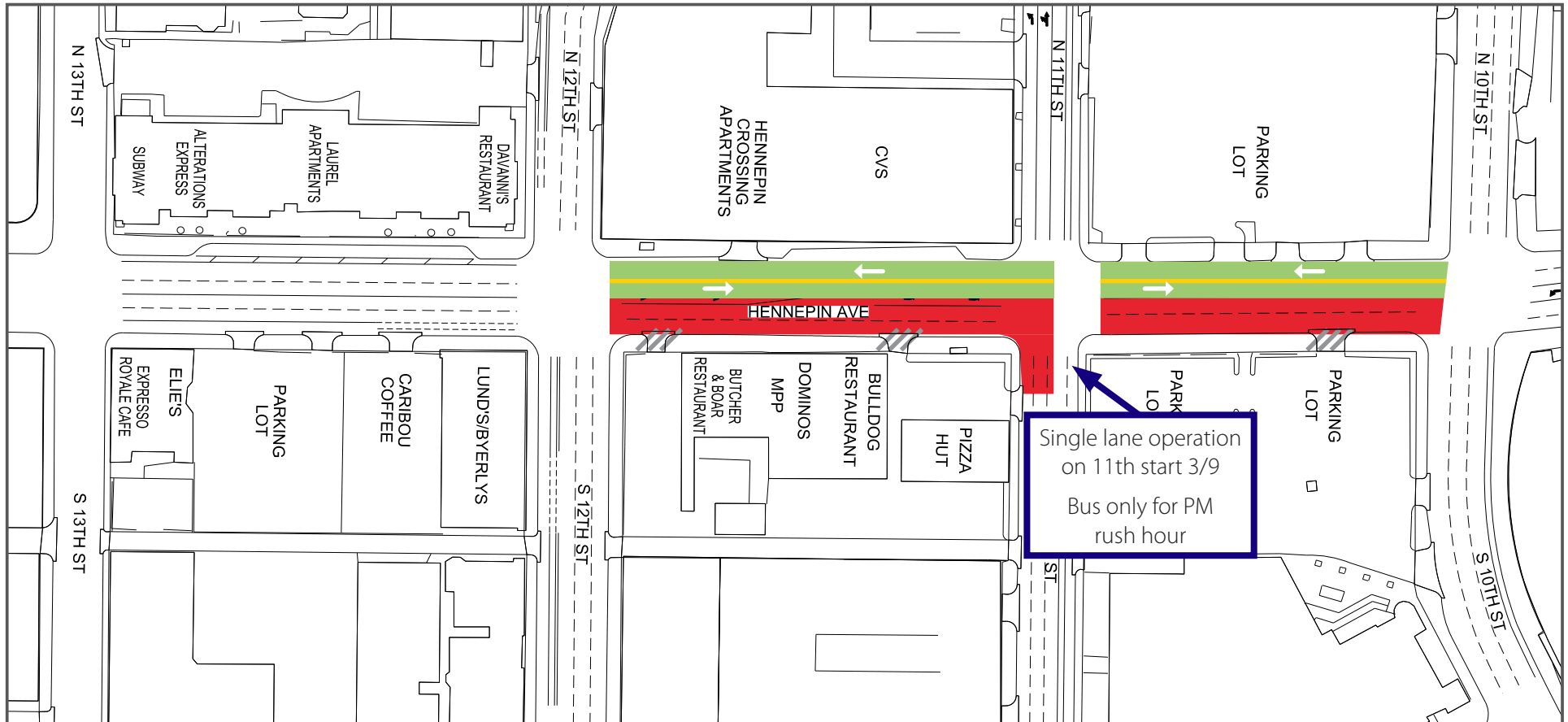
- Public and private utility work requiring the use of heavy equipment that will increase noise, vibration, and dust in work areas.
- Vehicle traffic congestion accompanying lane restrictions on Hennepin Ave. between 13th St and Washington Ave. Traffic will be reduced to one lane in each direction for the duration of utility construction. Lane restrictions will vary by block based on construction activity.
- Pedestrian detours as needed to facilitate construction needs. Greater impacts can be expected at intersections where work is occurring.
- Business access will remain open during the construction activity.
- Changes to Metro Transit. All Buses are detoured to Nicollet Mall. Visit Metro Transit website for specific route information.
- No left turns on or off Hennepin Ave. in certain locations.
- Cross streets will be reduced to one lane at times.



STAY CONNECTED

- Visit the project website: www.hennepindowntown.com
- Sign up for project updates on the project website.
- Contact the project hotline with questions, comments or concerns: **612-255-4049** or email HennepinCM@minneapolismn.gov

Block	Project Related Work	Anticipated Road/Pedestrian Restrictions				
		Temporary Ped Ramps	Parking Restrictions	Two Lanes Open	One Lane Open	Notes
12th Street Intersection						
12th to 11th	Xcel Energy installing new ducts and manholes	X	X	X		Hennepin will be reduced to 1-lane in each direction
11th Street Intersection	Xcel Energy installing new ducts and manholes				X	11th will be reduced to 1-lane
11th to 10th	Xcel Energy installing new ducts and manholes	X	X	X		Hennepin will be reduced to 1-lane in each direction
10th Street Intersection						
10th to 9th	Xcel Energy installing new ducts and manholes		X	X		Hennepin will be reduced to 1-lane in each direction
9th Street Intersection						
9th to 8th	Xcel Energy installing new ducts and manholes	X	X	X		Hennepin will be reduced to 1-lane in each direction
8th Street Intersection						
8th to 7th	Xcel Energy installing new ducts and manholes	X	X	X		Hennepin will be reduced to 1-lane in each direction
7th Street Intersection						
7th to 6th						
6th Street Intersection						
6th to 5th	Xcel Energy installing new ducts and manholes		X	X		Hennepin will be reduced to 1-lane in each direction
5th Street Intersection						
5th to 4th	Xcel Energy installing new ducts and manholes		X	X		Hennepin will be reduced to 1-lane in each direction
4th Street Intersection	Xcel Energy installing new ducts and manholes			X		4th will be reduced to 2-lanes
4th to 3rd	Xcel Energy installing new ducts and manholes		X	X		Hennepin will be reduced to 1-lane in each direction
3rd Street Intersection						
3rd to Washington	Xcel Energy installing new cables		X	X		Hennepin will be reduced to 1-lane in each direction
Washington Ave Intersection						



13th Street to 10th Street

- Lane Closures will vary over the next couple weeks and are subject to change

Work zone (no vehicle access)

*Sidewalks will be maintained

Valet and loading zone

Daytime non-rush hour work zone

Work zone vehicle access maintained

Open travel lanes

Vehicle access - SB Hennepin only

Vehicle Access - NB Hennepin only

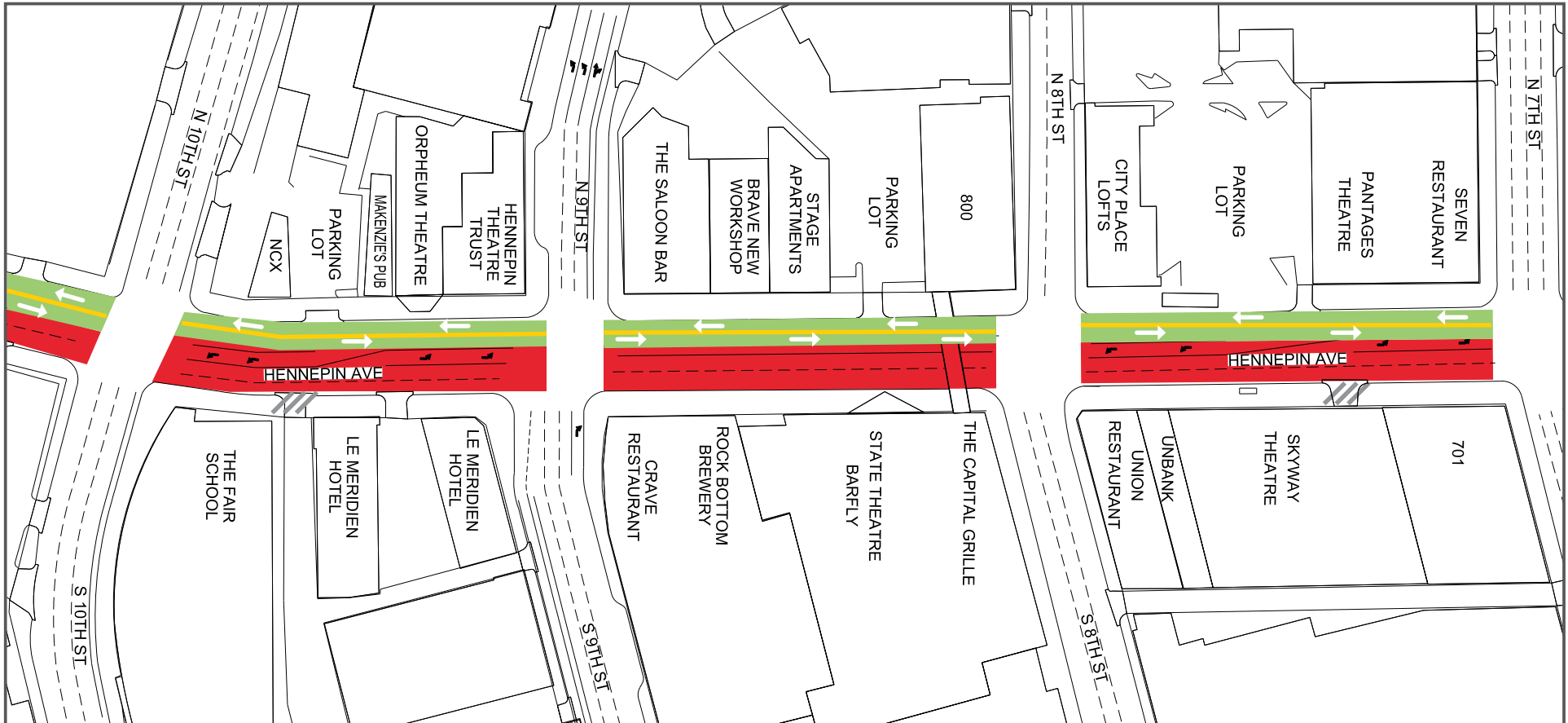
Full closure

HENNEPIN AVENUE

— Reconstruction Project —

Construction Update

Volume 23: March 1 – March 14, 2020



10th Street to 7th Street

- Lane Closures will vary over the next couple weeks and are subject to change

Work zone (no vehicle access)
*Sidewalks will be maintained

Valet and loading zone

Daytime non-rush hour work zone

Work zone vehicle access maintained

Open travel lanes

Vehicle access - SB Hennepin only

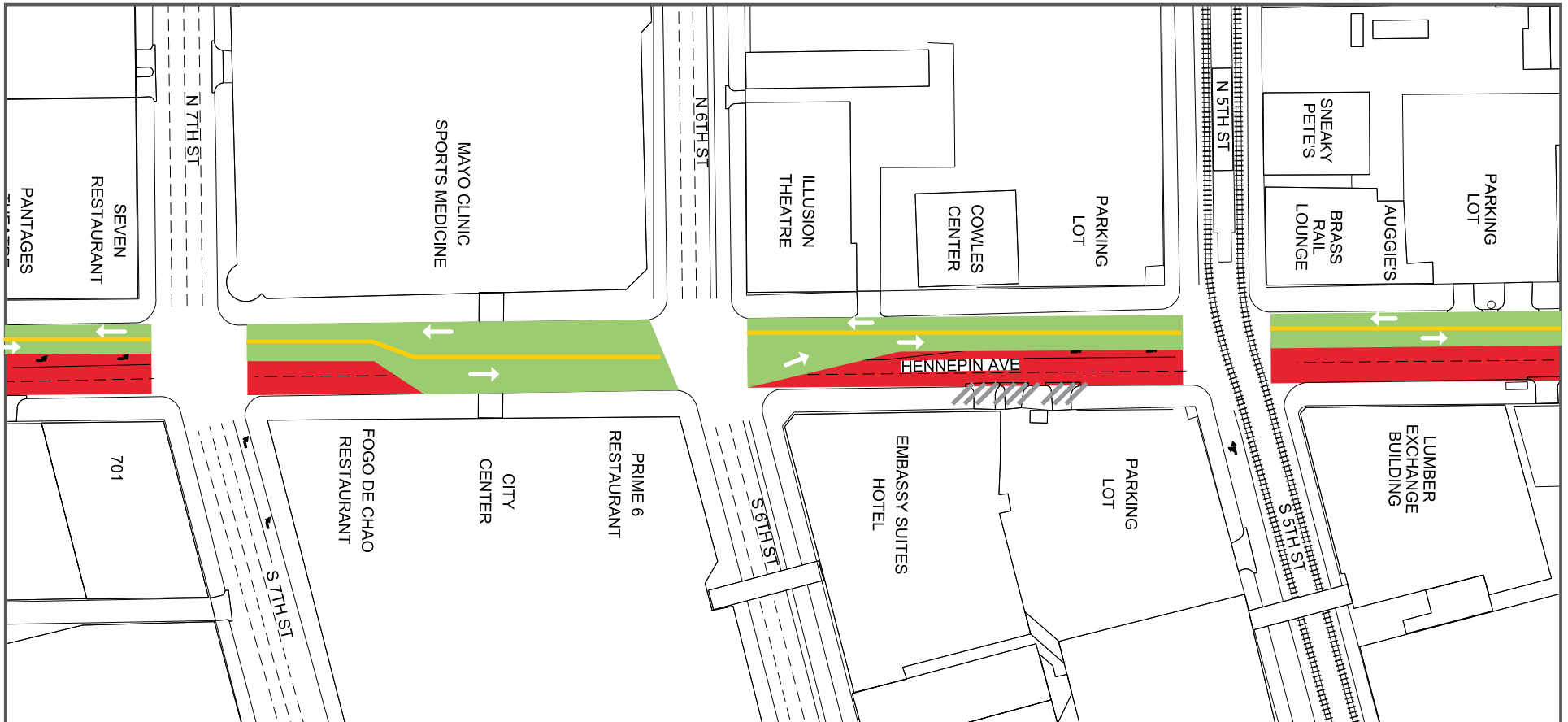
Vehicle Access - NB Hennepin only

HENNEPIN AVENUE

— Reconstruction Project —


Construction Update

Volume 23: March 1 – March 14, 2020





7th Street to 5th Street

- Lane Closures will vary over the next couple weeks and are subject to change


 Work zone (no vehicle access)

*Sidewalks will be maintained

 Valet and loading zone

 Daytime non-rush hour work zone

 Work zone vehicle access maintained

 Open travel lanes

 Vehicle access - SB Hennepin only

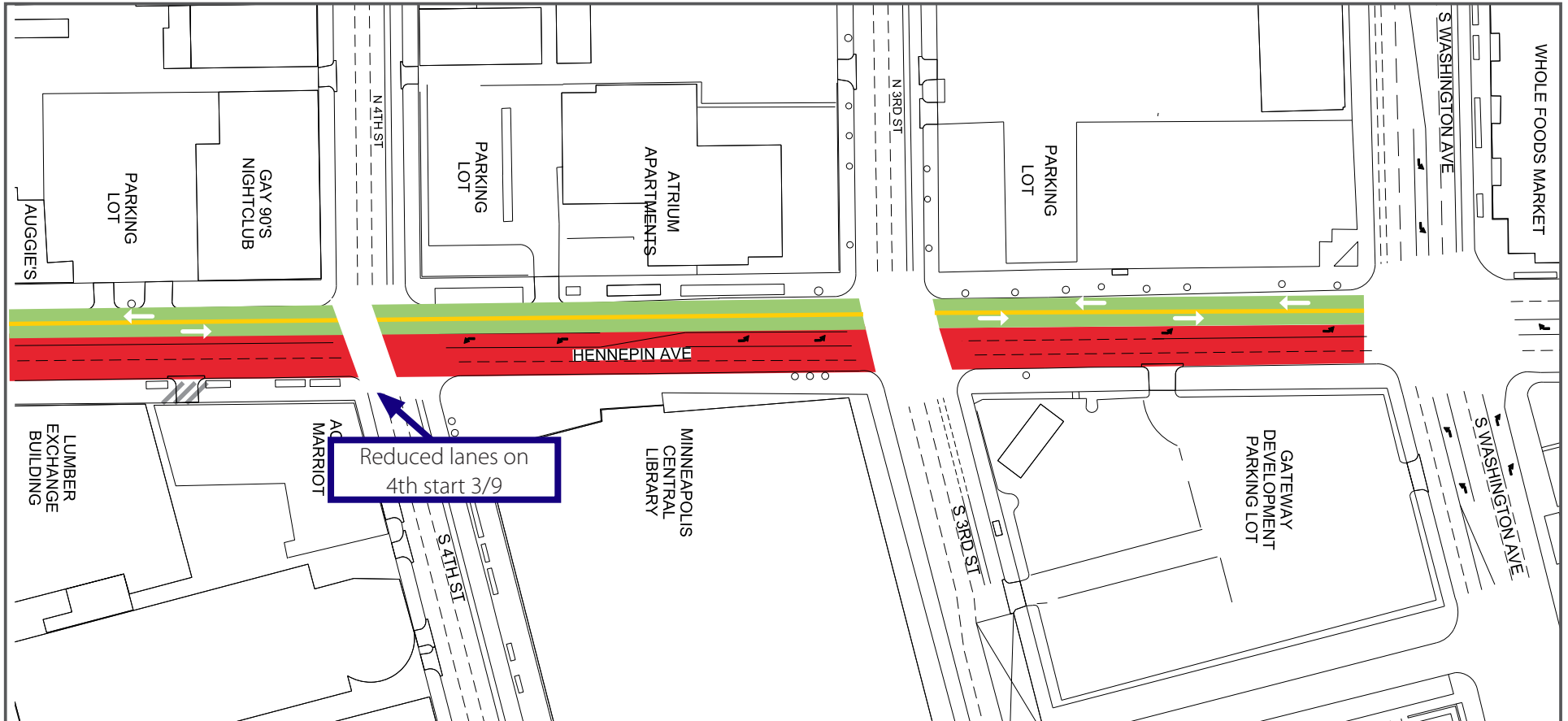
 Vehicle Access - NB Hennepin only

HENNEPIN AVENUE

— Reconstruction Project —


Construction Update


Volume 23: March 1 – March 14, 2020



4th Street to Washington Avenue


- Lane Closures will vary over the next couple weeks and are subject to change


 Work zone (no vehicle access)
*Sidewalks will be maintained


 Valet and loading zone

 Daytime non-rush hour work zone

 Work zone vehicle access maintained

 Open travel lanes

 Vehicle access - SB Hennepin only

 Vehicle Access - NB Hennepin only