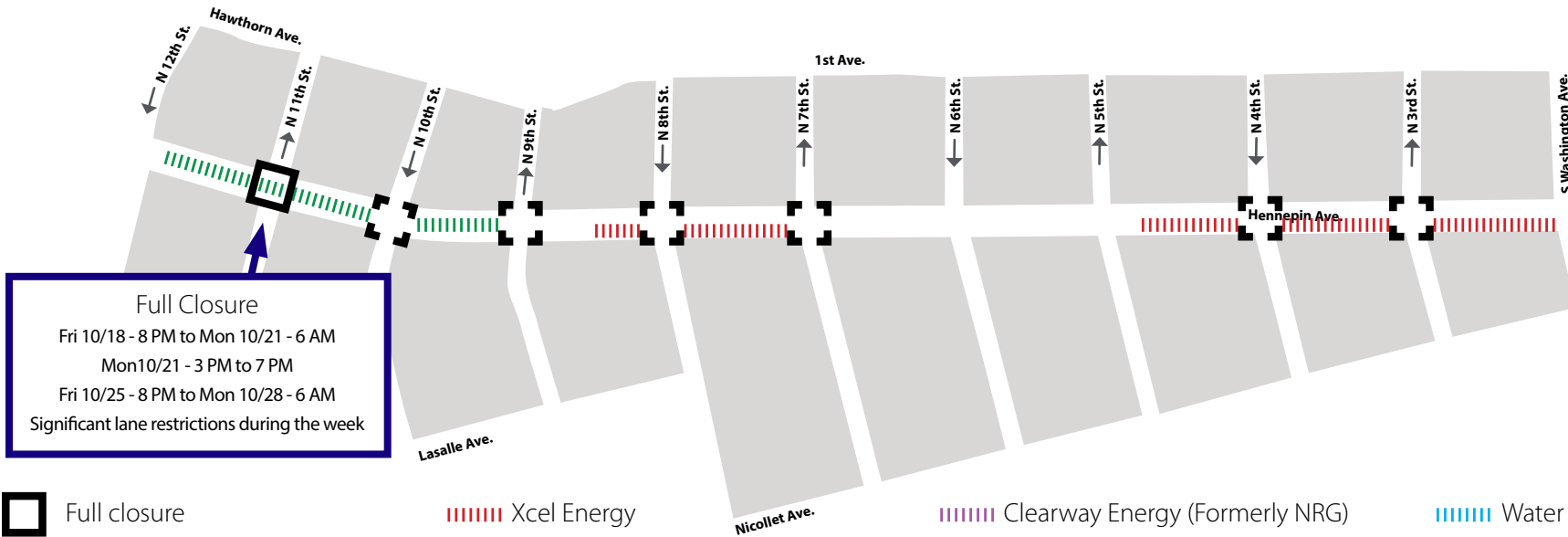


# HENNEPIN AVENUE

— Reconstruction Project —

## Construction Update

Volume 14: October 13– October 26, 2019



**Full Closure**  
 Fri 10/18 - 8 PM to Mon 10/21 - 6 AM  
 Mon 10/21 - 3 PM to 7 PM  
 Fri 10/25 - 8 PM to Mon 10/28 - 6 AM  
 Significant lane restrictions during the week

-  Full closure
-  Xcel Energy
-  Clearway Energy (Formerly NRG)
-  Water
-  Partial intersection reduction
-  Centerpoint gas
-  Telecommunications
-  City sewer



### WHAT'S HAPPENING

- Utility Construction will continue from 12th to 7th. This work will continue throughout 2019.
- Utility construction will continue from 5th Street to Washington. This work will continue throughout 2020.
- Utility construction will consist of both Public and Private utility improvements, upgrades, expansion, relocations and replacements.
- Sanitary sewer work will continue from 10th Street intersection toward 12th Street.
- Xcel Energy will continue work between 5th and Washington.
- Xcel will continue work at 7th Street and progress south.



### WHAT TO EXPECT

- Public and private utility work requiring the use of heavy equipment that will increase noise, vibration, and dust in work areas.
- Vehicle traffic congestion accompanying lane restrictions on Hennepin Ave. between 13th St and Washington Ave. Traffic will be reduced to one lane in each direction for the duration of utility construction. Lane restrictions will vary by block based on construction activity.
- Pedestrian detours as needed to facilitate construction needs. Greater impacts can be expected at intersections where work is occurring.
- Business access will remain open during the construction activity.
- Changes to Metro Transit. All Buses are detoured to Nicollet Mall. Visit Metro Transit website for specific route information.
- No left turns on or off Hennepin Ave. in certain locations.
- Cross streets will be reduced to one lane at times.



### STAY CONNECTED

- Visit the project website: [www.hennepindowntown.com](http://www.hennepindowntown.com)
- Sign up for project updates on the project website.
- Contact the project hotline with questions, comments or concerns: **612-225-4049** or email [HennepinCM@minneapolismn.gov](mailto:HennepinCM@minneapolismn.gov)



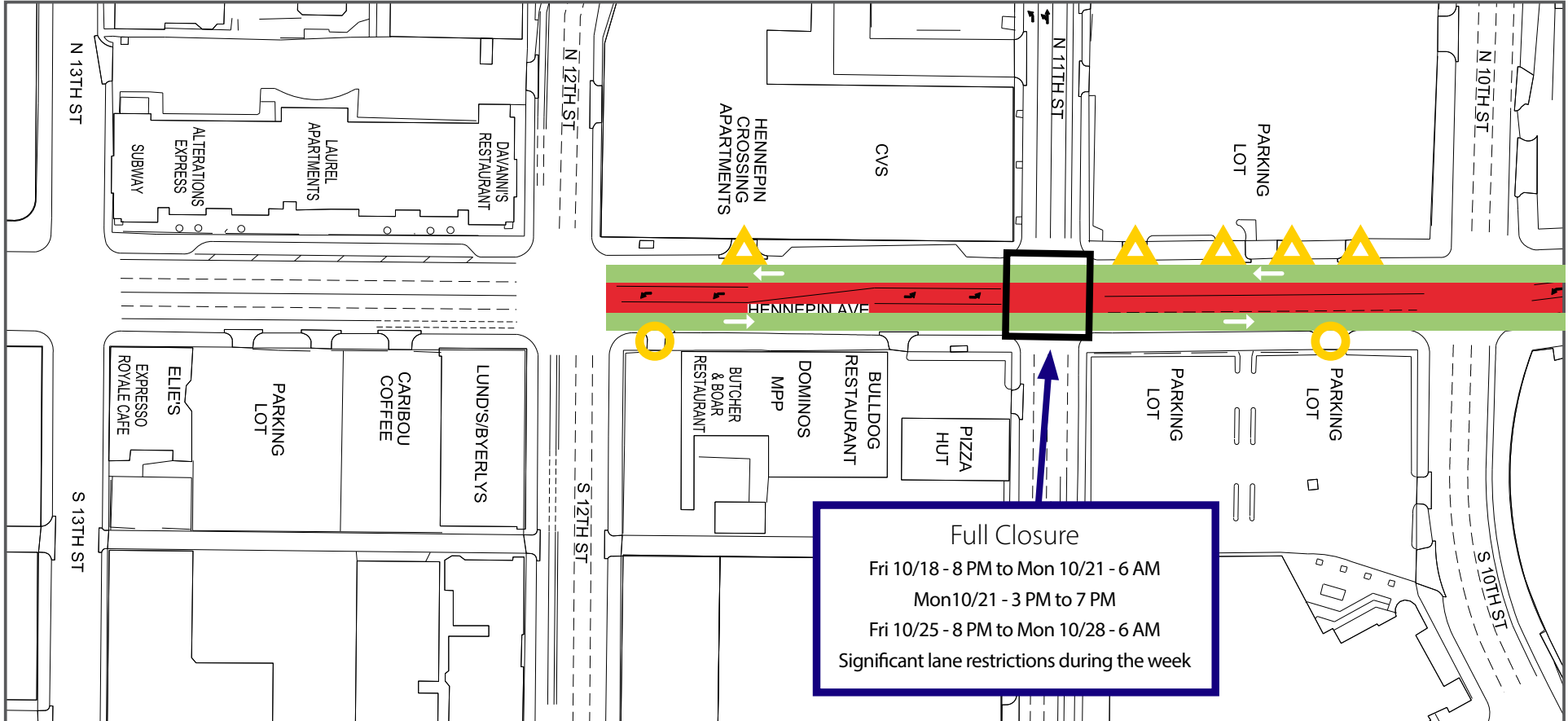
Block	Project Related Work	Anticipated Road/Pedestrian Restrictions				
		Temporary Ped Ramps	Parking Restrictions	Two Lanes Open	One Lane Open	Notes
<b>12th Street Intersection</b>						
<b>12th to 11th</b>	Sanitary sewer and manhole replacement		X	X		Hennepin will be reduced to 1-lane in each direction
<b>11th Street Intersection</b>	Sanitary sewer and manhole replacement	X	X		X	Full closure on weekends and rush hours
<b>11th to 10th</b>	Sanitary sewer and manhole replacement		X	X		Hennepin will be reduced to 1-lane in each direction
<b>10th Street Intersection</b>						
<b>10th to 9th</b>	Sanitary sewer and manhole replacement		X	X		Hennepin will be reduced to 1-lane in each direction
<b>9th Street Intersection</b>						
<b>9th to 8th</b>						
<b>8th Street Intersection</b>						
<b>8th to 7th</b>	Xcel Energy installing new ducts and manholes	X	X	X		Hennepin will be reduced to 1-lane in each direction
<b>7th Street Intersection</b>						
<b>7th to 6th</b>						
<b>6th Street Intersection</b>						
<b>6th to 5th</b>						
<b>5th Street Intersection</b>						
<b>5th to 4th</b>	Xcel Energy installing new ducts and manholes		X	X		Hennepin will be reduced to 1-lane in each direction
<b>4th Street Intersection</b>	Xcel Energy installing new ducts and manholes					
<b>4th to 3rd</b>	Xcel Energy installing new ducts and manholes		X	X		Hennepin will be reduced to 1-lane in each direction
<b>3rd Street Intersection</b>						
<b>3rd to Washington</b>	Xcel Energy installing new ducts and manholes		X	X		Hennepin will be reduced to 1-lane in each direction
<b>Washington Ave Intersection</b>						

# HENNEPIN AVENUE

— Reconstruction Project —









## Construction Update

Volume 14: October 13– October 26, 2019



### 13th Street to 10th Street

- Lane Closures will vary over the next couple weeks and are subject to change

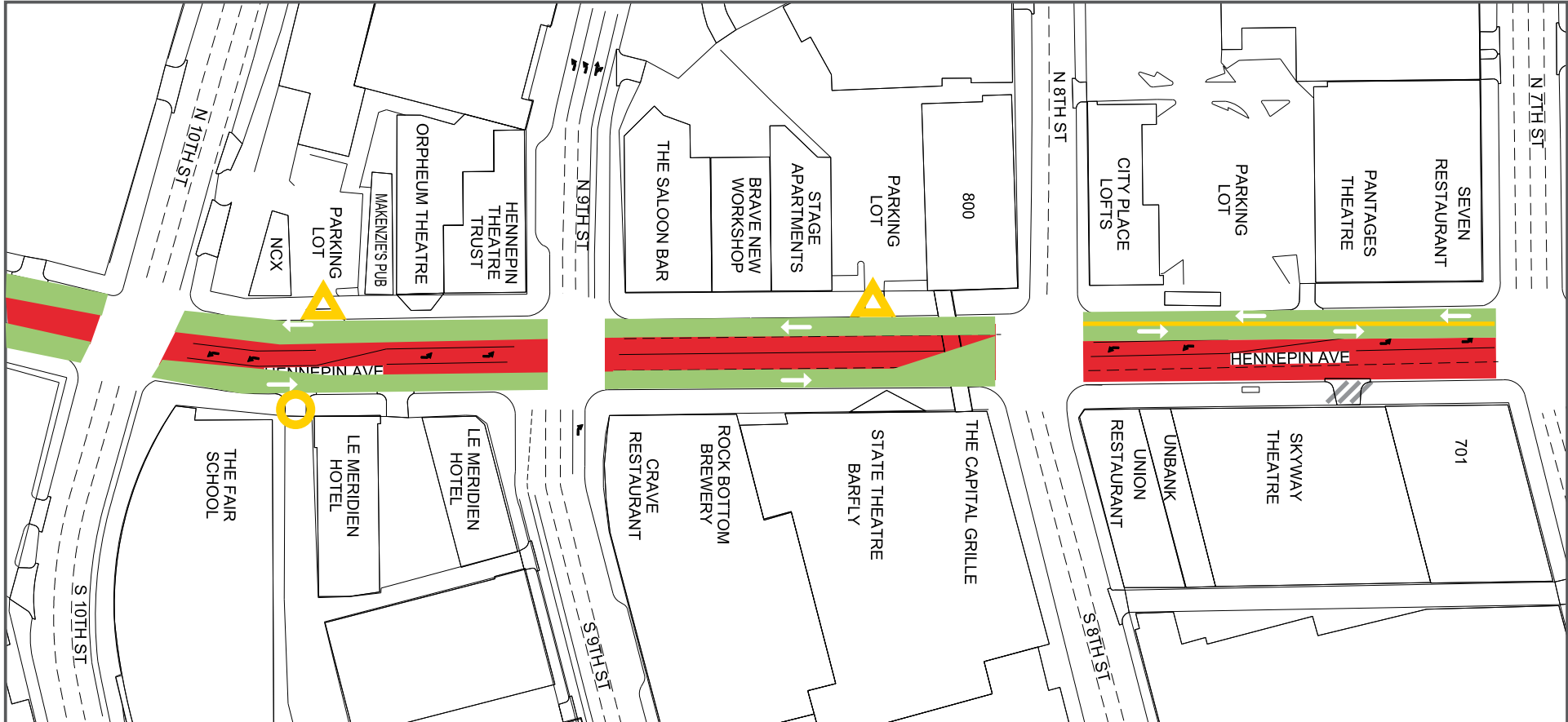
 Work zone (no vehicle access) *Sidewalks will be maintained	 Work zone vehicle access maintained	 Vehicle Access - NB Hennepin only
 Valet and loading zone	 Open travel lanes	 Full closure
 Daytime non-rush hour work zone	 Vehicle access - SB Hennepin only	

# HENNEPIN AVENUE

— Reconstruction Project —


## Construction Update


Volume 14: October 13– October 26, 2019





### 10th Street to 7th Street


- Lane Closures will vary over the next couple weeks and are subject to change


 Work zone (no vehicle access)  
\*Sidewalks will be maintained


 Valet and loading zone

 Daytime non-rush hour work zone

 Work zone vehicle access maintained

 Open travel lanes

 Vehicle access - SB Hennepin only

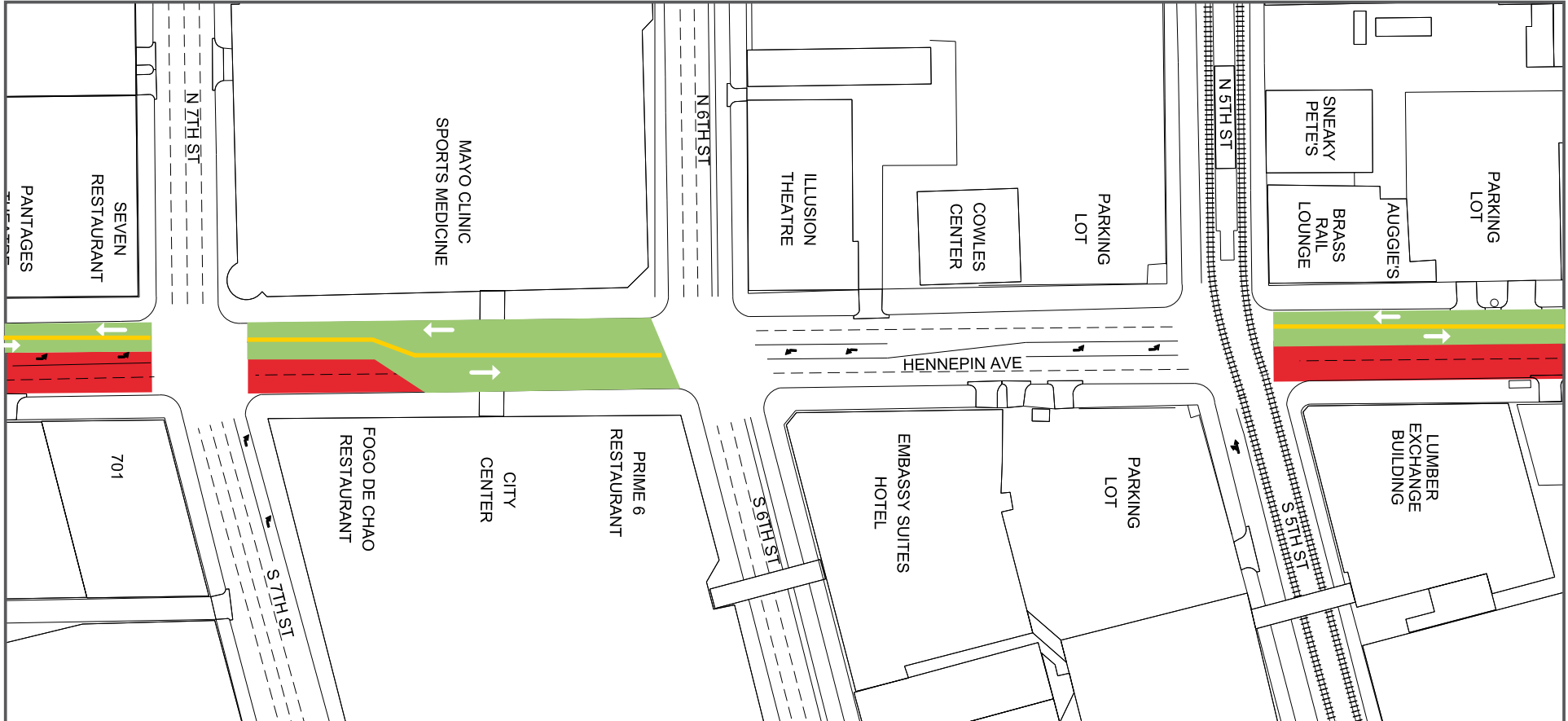
 Vehicle Access - NB Hennepin only

# HENNEPIN AVENUE

— Reconstruction Project —

## Construction Update

Volume 14: October 13– October 26, 2019



### 7th Street to 5th Street

- Lane Closures will vary over the next couple weeks and are subject to change

Work zone (no vehicle access)

\*Sidewalks will be maintained

Valet and loading zone

Daytime non-rush hour work zone

Work zone vehicle access maintained

Open travel lanes

Vehicle access - SB Hennepin only

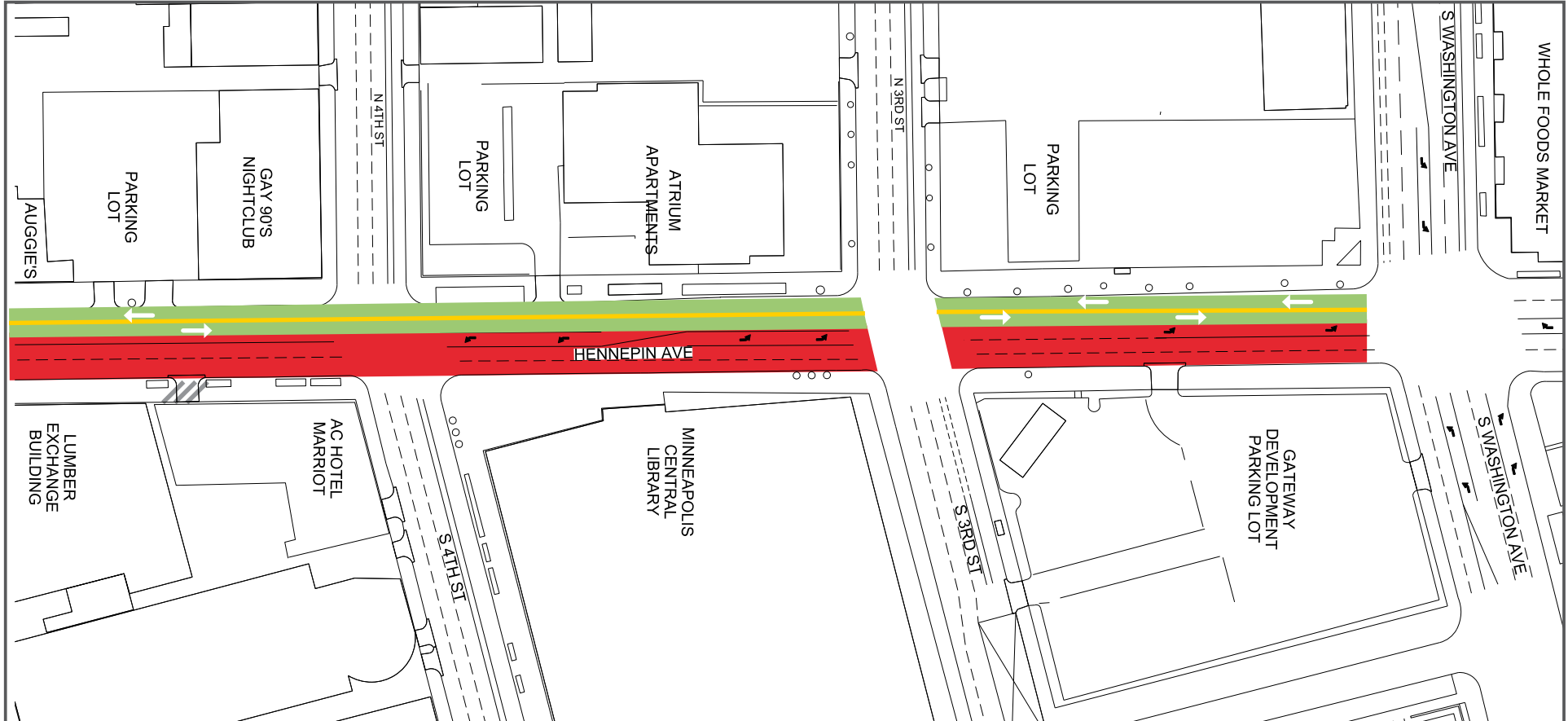
Vehicle Access - NB Hennepin only

# HENNEPIN AVENUE

— Reconstruction Project —


## Construction Update

Volume 14: October 13– October 26, 2019

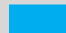



### 4th Street to Washington Avenue


- Lane Closures will vary over the next couple weeks and are subject to change


 Work zone (no vehicle access)


\*Sidewalks will be maintained


 Valet and loading zone

 Daytime non-rush hour work zone

 Work zone vehicle access maintained

 Open travel lanes

 Vehicle access - SB Hennepin only

 Vehicle Access - NB Hennepin only