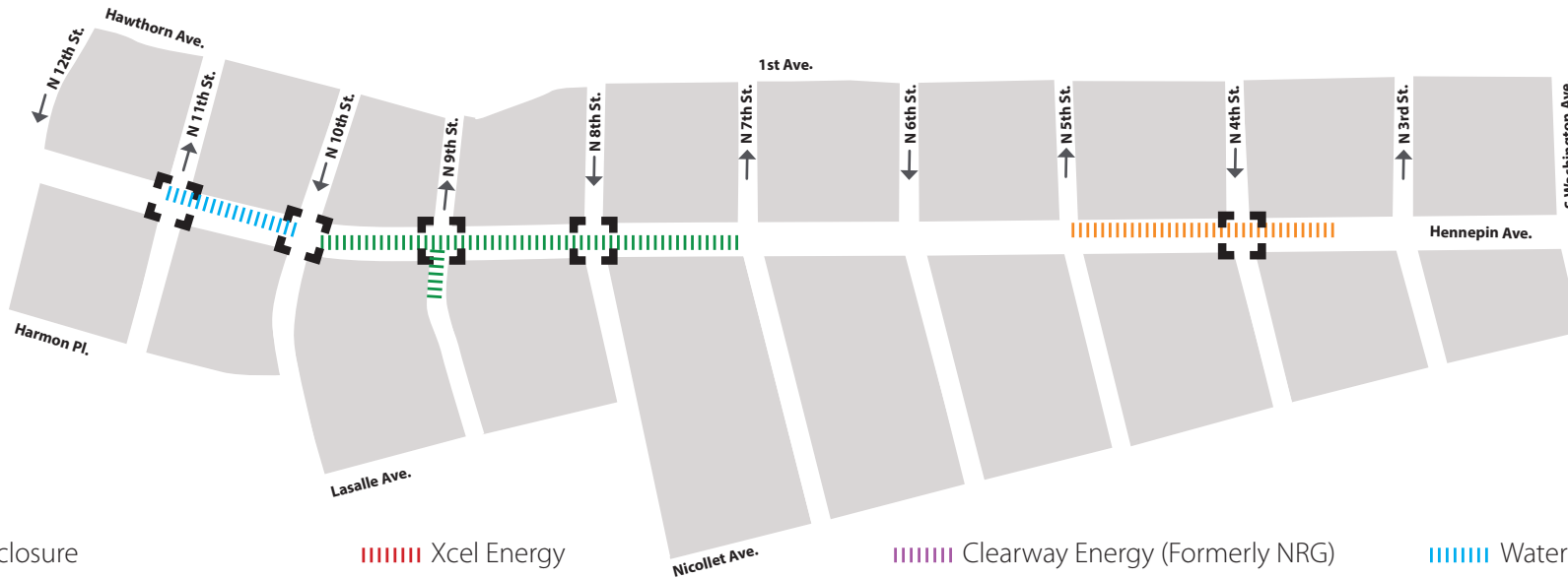





# HENNEPIN AVENUE

— Reconstruction Project —

**Construction Update**  
Volume 6: June 23–July 6, 2019



-  Full closure
-  Xcel Energy
-  Clearway Energy (Formerly NRG)
-  Water
-  Partial intersection reduction
-  Centerpoint gas
-  Telecommunications
-  City sewer



## WHAT'S HAPPENING

- Hennepin Avenue Utility Construction has begun from 12th to 7th. This work will continue throughout 2019.
- Utility construction has begun from 5th Street to Washington and will continue throughout 2020.
- Utility construction will consist of both Public and Private utility improvements, upgrades, expansion, relocations and replacements.
- East bound 8th Street is closed at Hennepin and will remain closed until mid-June.
- Access to East bound 8th Street will be maintained from the South on North bound Hennepin.
- Sanitary sewer work will continue at 9th Street intersection toward 7th.
- Utility service work for the gateway development work will begin in July.



## WHAT TO EXPECT

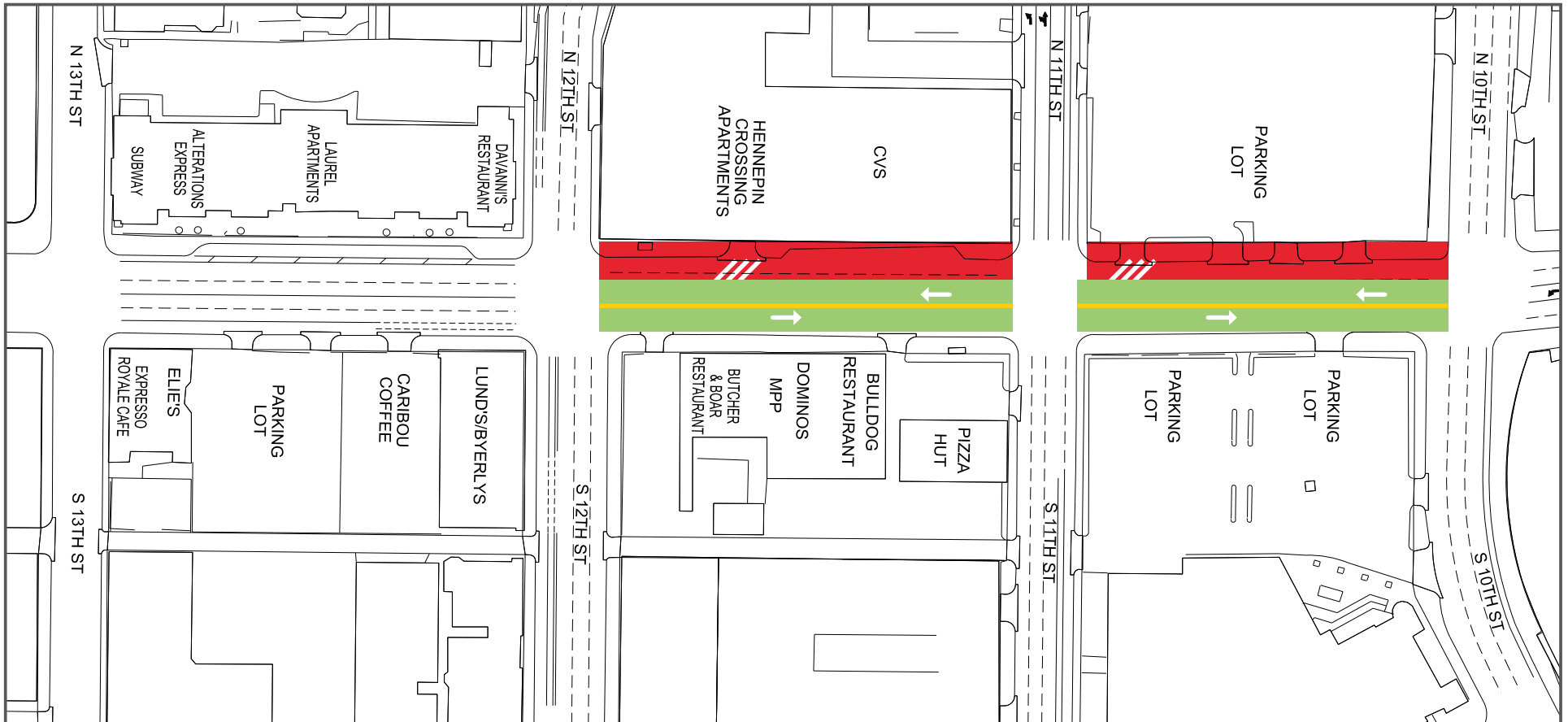
- Public and private utility work requiring the use of heavy equipment that will increase noise, vibration, and dust in work areas.
- Vehicle traffic congestion accompanying lane restrictions on Hennepin Ave. between 13th St and 6th St. Traffic will be reduced to one lane in each direction for the duration of utility construction. Lane restrictions will vary by block based on construction activity.
- Pedestrian detours as needed to facilitate construction needs. Greater impacts can be expected at intersections where work is occurring.
- Business access will remain open during the construction activity.
- Changes to Metro Transit. All Buses are detoured to Nicollet Mall. Visit Metro Transit website for specific route information.
- No left turns on or off Hennepin Ave. in certain locations.
- Cross streets will be reduced to one lane at times.



## STAY CONNECTED


- Visit the project website: [www.hennepindowntown.com](http://www.hennepindowntown.com)
- Sign up for project updates on the project website.
- Contact the project hotline with questions, comments or email concerns: **612-225-4049** or email [HennepinCM@minneapolismn.gov](mailto:HennepinCM@minneapolismn.gov)

Block	Project Related Work	Anticipated Road/Pedestrian Restrictions				
		Temporary Ped Ramps	Parking Restrictions	Two Lanes Open	One Lane Open	Notes
<b>12th Street Intersection</b>						
<b>12th to 11th</b>	Water main replacement		X	X		
<b>11th Street Intersection</b>	Water main replacement		X	X	X	
<b>11th to 10th</b>	Water main replacement	X	X	X		Hennepin will be reduced to 1-lane in each direction at times
<b>10th Street Intersection</b>	Water main replacement	X	X	X		10th will be reduced to 1-lane at times
<b>10th to 9th</b>	Sanitary sewer and manhole replacement	X	X	X		Hennepin will be reduced to 1-lane in each direction
<b>9th Street Intersection</b>						
<b>9th to 8th</b>	Sanitary sewer and manhole replacement	X	X	X		Hennepin will be reduced to 1-lane in each direction
<b>8th Street Intersection</b>		X	X			8th Street is closed at Hennepin to cross traffic.
<b>8th to 7th</b>	Sanitary sewer and manhole replacement	X	X	X		Hennepin will be reduced to 1-lane in each direction at times
<b>7th Street Intersection</b>						
<b>7th to 6th</b>						
<b>6th Street Intersection</b>						
<b>6th to 5th</b>						
<b>5th Street Intersection</b>						
<b>5th to 4th</b>	Telecommunication companies accessing manholes and installing new ducts	X	X	X		
<b>4th Street Intersection</b>	Telecommunication companies accessing manholes and installing new ducts	X	X	X		
<b>4th to 3rd</b>	Telecommunication companies accessing manholes and installing new ducts	X	X	X		
<b>3rd Street Intersection</b>						
<b>3rd to Washington</b>						
<b>Washington Ave Intersection</b>						




### 13th Street to 10th Street


- Lane Closures will vary over the next couple weeks and are subject to change


 Work zone (no vehicle access)  
\*Sidewalks will be maintained

 Valet and loading zone

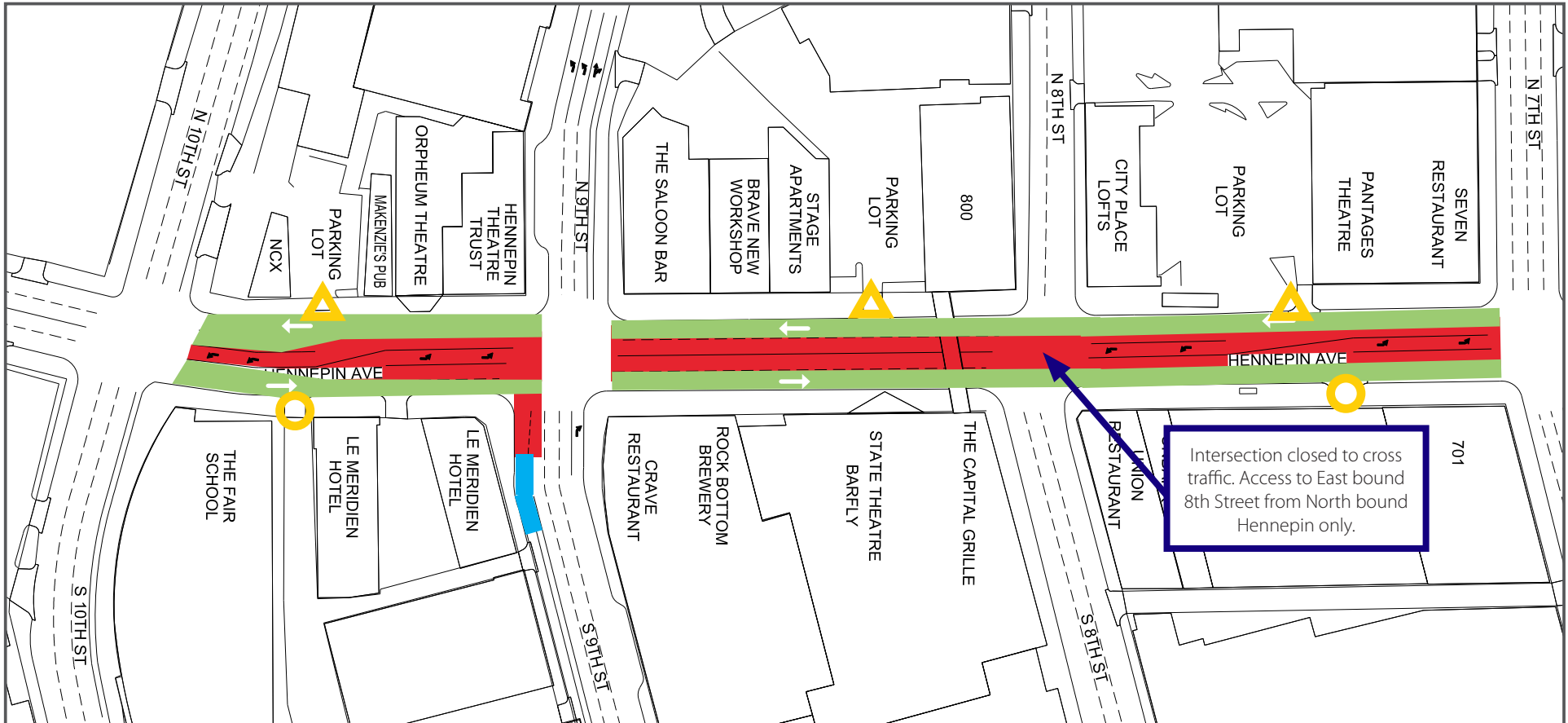
 Daytime non-rush hour work zone

 Work zone vehicle access maintained

 Open travel lanes

 Vehicle access - SB Hennepin only

 Vehicle Access - NB Hennepin only



### 10th Street to 7th Street

- Lane Closures will vary over the next couple weeks and are subject to change

Work zone (no vehicle access)  
\*Sidewalks will be maintained

Valet and loading zone

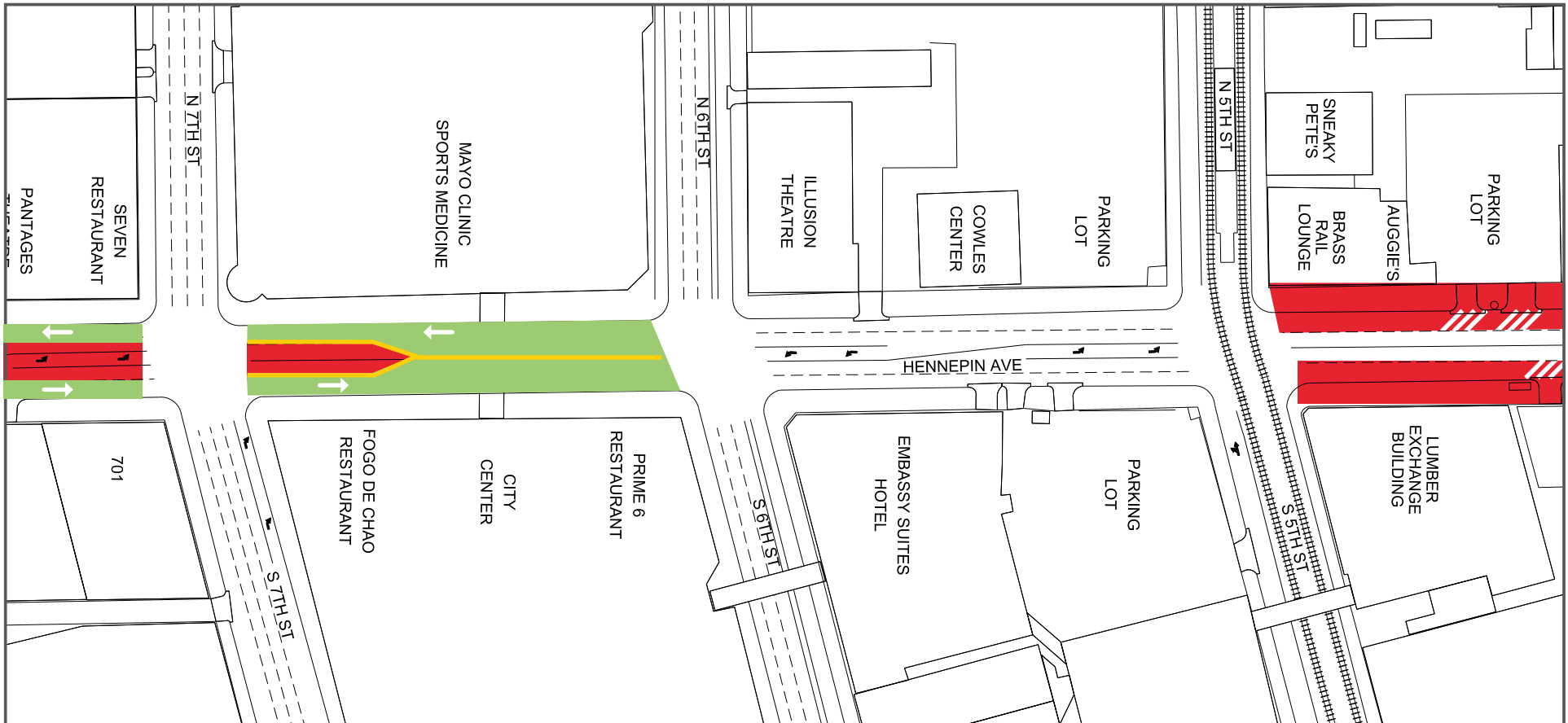
Daytime non-rush hour work zone

Work zone vehicle access maintained

Open travel lanes

Vehicle access - SB Hennepin only

Vehicle Access - NB Hennepin only



### 7th Street to 5th Street

- Lane Closures will vary over the next couple weeks and are subject to change

Work zone (no vehicle access)  
\*Sidewalks will be maintained

Valet and loading zone

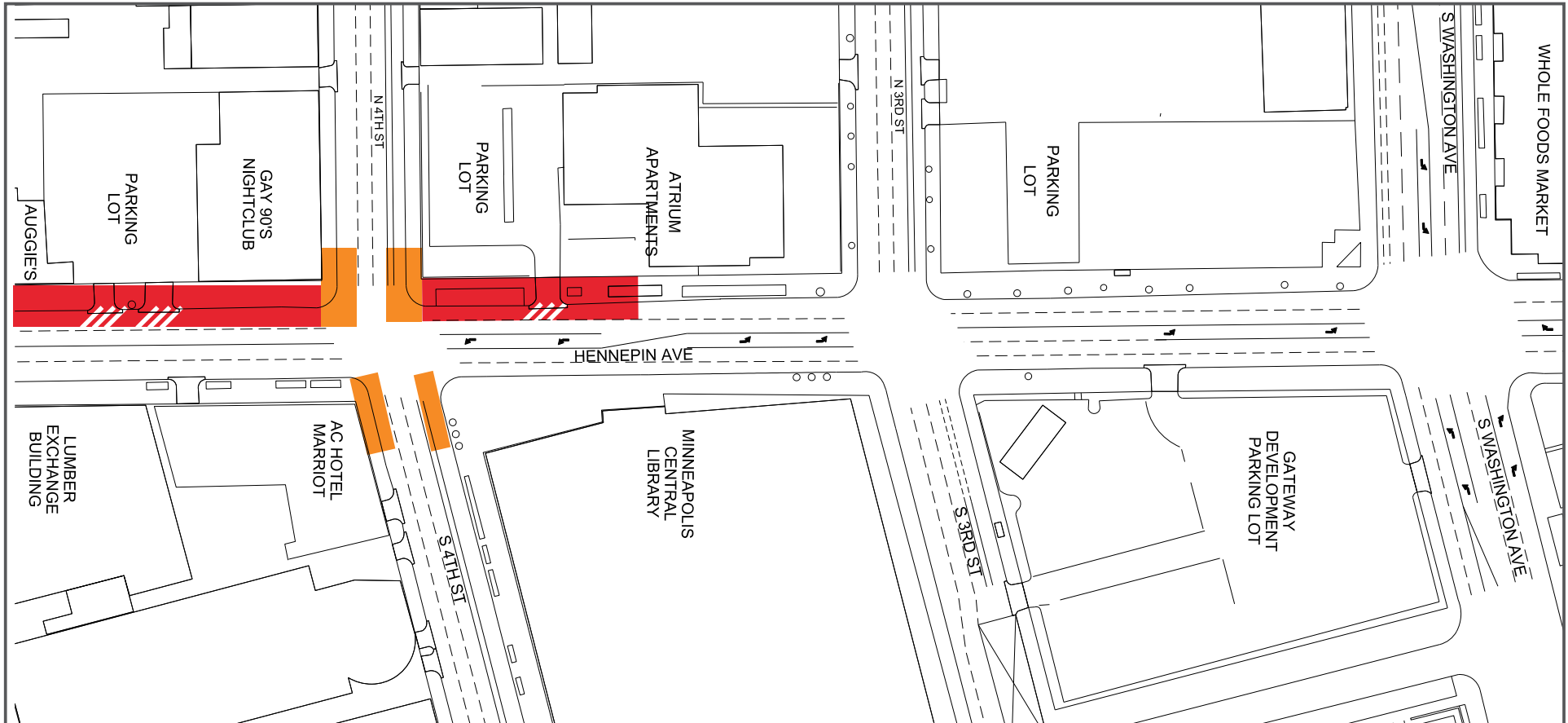
Daytime non-rush hour work zone

Work zone vehicle access maintained

Open travel lanes

Vehicle access - SB Hennepin only

Vehicle Access - NB Hennepin only



### 4th Street to Washington Avenue

- Lane Closures will vary over the next couple weeks and are subject to change

Work zone (no vehicle access)  
\*Sidewalks will be maintained

Valet and loading zone

Daytime non-rush hour work zone

Work zone vehicle access maintained

Open travel lanes

Vehicle access - SB Hennepin only

Vehicle Access - NB Hennepin only