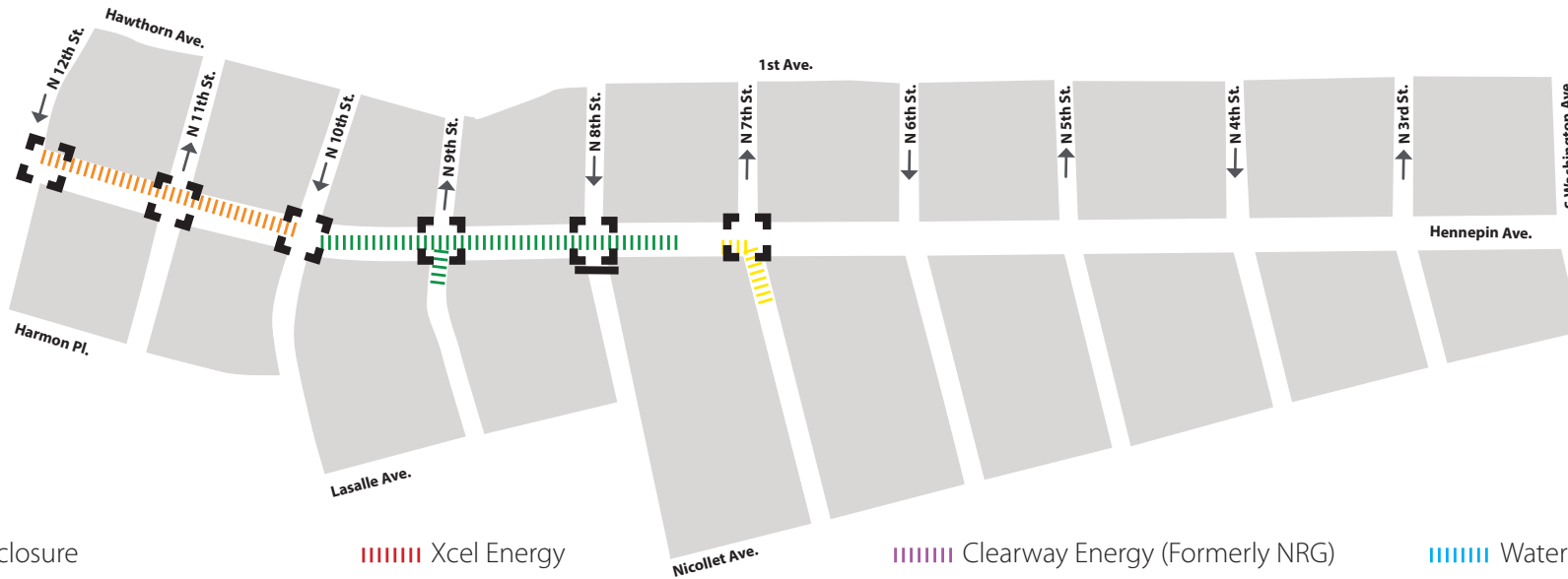


HENNEPIN AVENUE

— Reconstruction Project —

Construction Update
Volume 3: May 12–May 25, 2019



Full closure

Xcel Energy

Clearway Energy (Formerly NRG)

Water

Partial intersection reduction

Centerpoint gas

Telecommunications

City sewer



WHAT'S HAPPENING

- Hennepin Avenue Utility Construction has begun from 12th to 7th. This work will continue throughout 2019.
- Utility construction will consist of both Public and Private utility improvements, upgrades, expansion, relocations and replacements.
- Telecommunication companies will continue work between 12th and 10th Streets.
- Clearway Energy and Centerpoint Energy will continue work near 7th Street.
- 8th Street will be closed at Hennepin.
- Sanitary sewer work will begin at 9th Street intersection.
- Utility work will begin on the North end of Hennepin near Washington in June.



WHAT TO EXPECT

- Public and private utility work requiring the use of heavy equipment that will increase noise, vibration, and dust in work areas.
- Vehicle traffic congestion accompanying lane restrictions on Hennepin Ave. between 13th St and 6th St. Traffic will be reduced to one lane in each direction for the duration of utility construction. Lane restrictions will vary by block based on construction activity.
- Pedestrian detours as needed to facilitate construction needs. Greater impacts can be expected at intersections where work is occurring.
- Business access will remain open during the construction activity.
- Changes to Metro Transit. All Buses are detoured to Nicollet Mall. Visit Metro Transit website for specific route information.
- No left turns on or off Hennepin Ave. in certain locations.
- Cross streets will be reduced to one lane at times.



STAY CONNECTED

- Visit the project website: www.hennepindowntown.com
- Sign up for project updates on the project website.
- Contact the project hotline with questions, comments or concerns: **612-225-4049** or email HennepinCM@minneapolismn.gov

HENNEPIN AVENUE

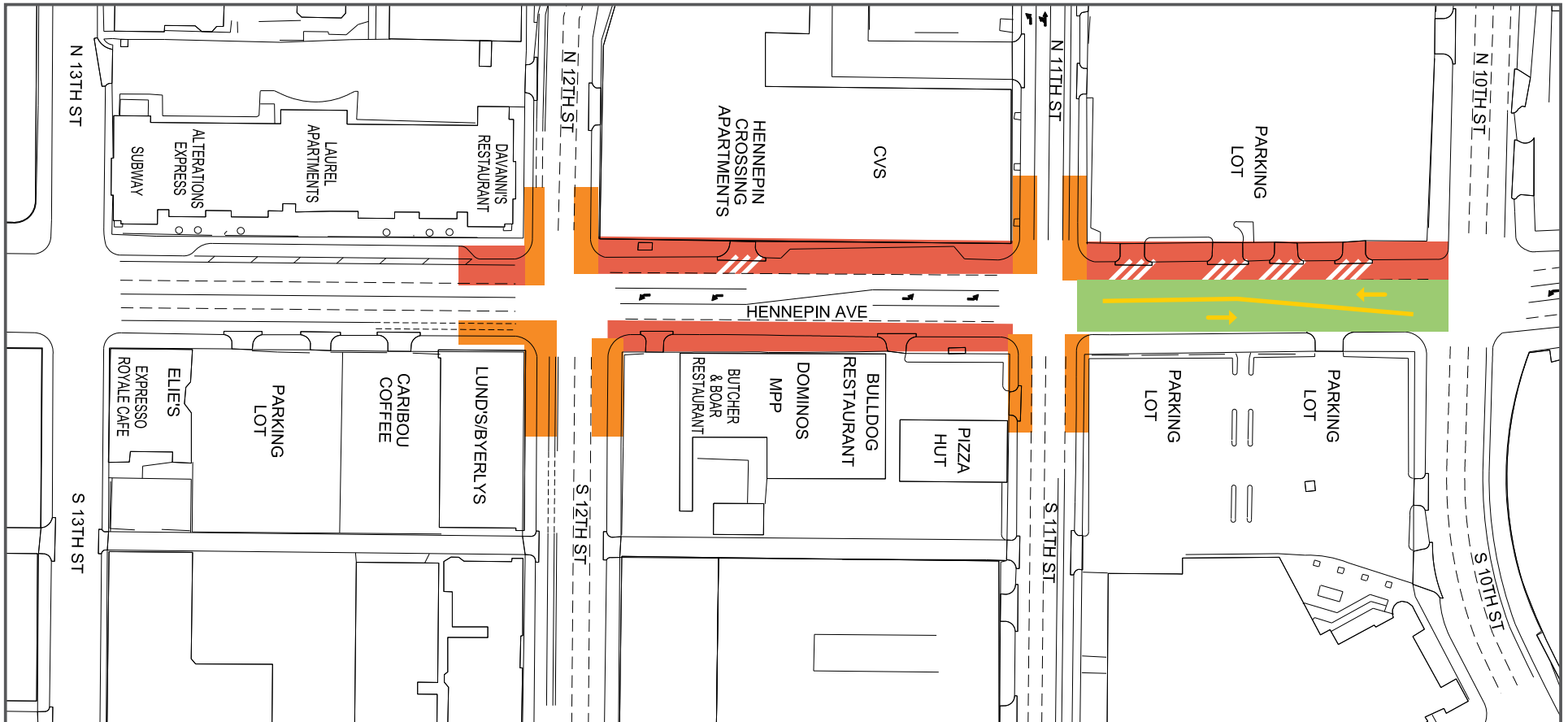
Reconstruction Project

Block-by-Block Work Summary

May 12 – May 25, 2019



Block	Project Related Work	Anticipated Road/Pedestrian Restrictions				
		Temporary Ped Ramps	Parking Restrictions	Two Lanes Open	One Lane Open	Notes
12th Street Intersection	Telecommunication companies accessing manholes and installing new ducts	X	X	X		
12th to 11th	Telecommunication companies accessing manholes and installing new ducts	X	X	X		Hennepin will be reduced to 1-lane in each direction at times
11th Street Intersection	Telecommunication companies accessing manholes and installing new ducts	X	X	X		
11th to 10th	Telecommunication companies accessing manholes and installing new ducts	X	X	X		Hennepin will be reduced to 1-lane in each direction at times
10th Street Intersection		X	X	X		
10th to 9th	Sanitary sewer and manhole replacement	X	X	X		Hennepin will be reduced to 1-lane in each direction
9th Street Intersection	Sanitary sewer and manhole replacement	X	X	X		
9th to 8th	Sanitary sewer and manhole replacement	X	X	X		Hennepin will be reduced to 1-lane in each direction
8th Street Intersection		X	X			8 th Street is closed at Hennepin.
8th to 7th	Centerpoint installing new gas main	X	X	X		Hennepin will be reduced to 1-lane in each direction at times
7th Street Intersection	Centerpoint Energy installing new gas main	X	X	X		
7th to 6th						
6th Street Intersection						
6th to 5th						
5th Street Intersection						
5th to 4th						
4th Street Intersection						
4th to 3rd						
3rd Street Intersection						
3rd to Washington						
Washington Ave Intersection						



13th Street to 10th Street

- Lane Closures will vary over the next couple weeks and are subject to change

Work zone (no vehicle access)

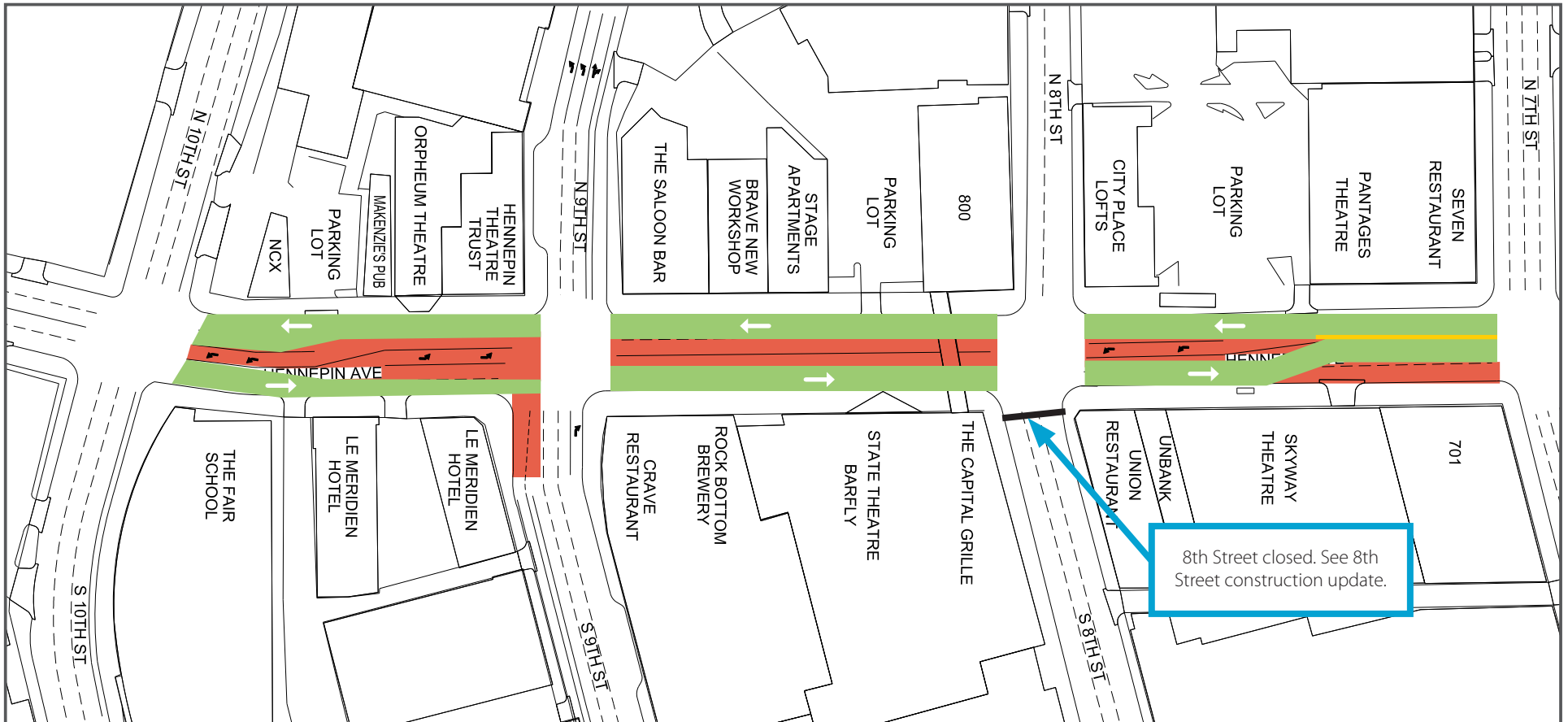
*Sidewalks will be maintained

Daytime Non-Rush Hour work zone

Open Travel Lanes

Valet and loading zone

Work zone vehicle access maintained



10th Street to 7th Street

- Lane Closures will vary over the next couple weeks and are subject to change

Work zone (no vehicle access)

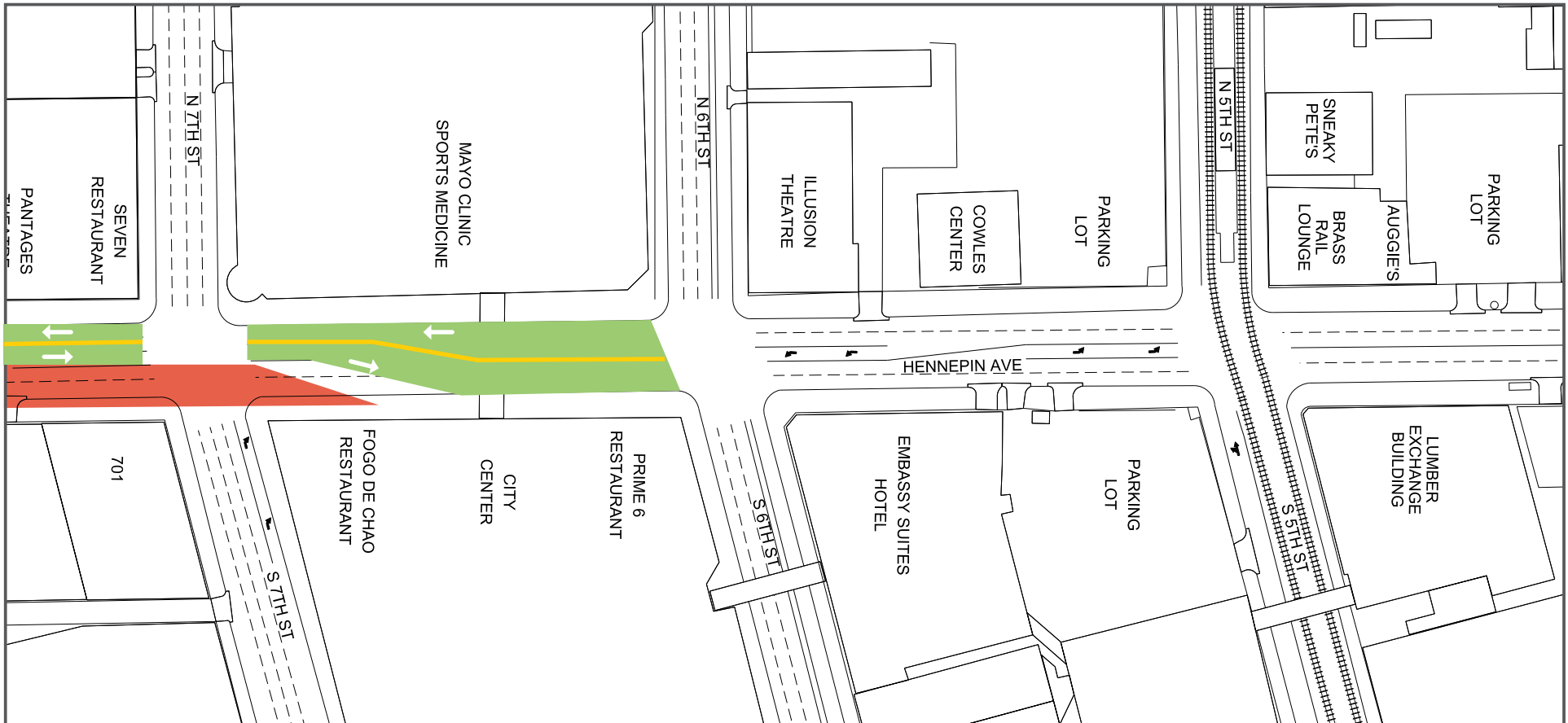
*Sidewalks will be maintained

Daytime Non-Rush Hour work zone

Open Travel Lanes

Valet and loading zone

Work zone vehicle access maintained



7th Street to 5th Street

- Lane Closures will vary over the next couple weeks and are subject to change

Work zone (no vehicle access)

*Sidewalks will be maintained

Daytime Non-Rush Hour work zone

Open Travel Lanes

Valet and loading zone

Work zone vehicle access maintained